

Temperature Screening Thermal Solutions



SAFER, FASTER, SMARTER

With advanced detectors and algorithms, Hikvision's Temperature Screening Thermal Cameras can detect elevated skin-surface temperatures in moving crowds such as passengers, commuters and shoppers, with accuracy up to $\pm 0.3^{\circ}\text{C}$.



Increased Safety

NON-CONTACT measurement to avoid physical contact



High Efficiency

ONE SECOND to detect the skin-surface temperature of a person



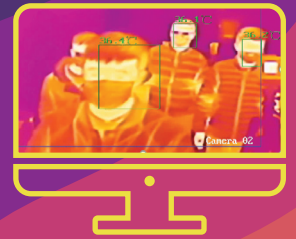
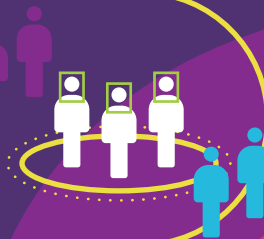
AI Detection

REDUCES FALSE ALARMS from other heat sources



Multi-Person Detection

SIMULTANEOUSLY captures results



Temperature Screening Thermal Products

DS-2TD2637B-10/P



DS-2TD2636B-15/P

AI Detection

- 384*288 thermal resolution
- 10 / 15 mm thermal lens
Recommended camera-target distance: 3-9 m
- 6 mm optical lens

DS-2TD2617B/PA



AI Detection

- 160*120 thermal resolution
- 3 / 6 mm thermal lens
Recommended camera-target distance: 0.8-1.5 m / 1.5-3.0 m
- 4 / 6 mm optical lens

DS-2TD1217B/PA



AI Detection

- 160*120 thermal resolution
- 3 / 6 mm thermal lens
Recommended camera-target distance: 0.8-1.5 m / 1.5-3.0 m
- 4 / 6 mm optical lens

DS-2TP21B-6AVF/W



Wi-Fi

- 160*120 thermal resolution
- Max 8 MP optical resolution
- 6 mm thermal lens
Recommended camera-target distance: 1.5-3.0 m

ISD-SMG318LT-F



Metal Detector Door with Thermal Turret Camera

- LCD screen with real-time temperature display and people-counting statistics
- Light and sound alarm
- 160*120 thermal resolution
- 3 mm lens / 4 mm optical lens

DS-2TE127-G4A



Blackbody Calibrator

- Increases the temperature measurement accuracy from $\pm 0.5^{\circ}\text{C}$ to $\pm 0.3^{\circ}\text{C}$.