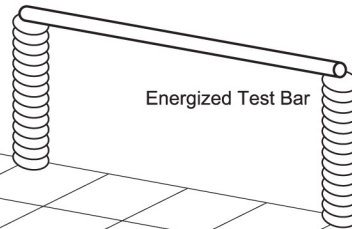




V-WATCH[®]

PERSONAL VOLTAGE DETECTOR



Sensitivity #20

Voltage: 2.4kV Line-Ground

Location	Slow Beep	Fast Beep	Continuous
Side of Bar	7 ft.	5 ft.	4 ft.
End of Bar	5 ft.	3.5 ft.	2.5 ft.

Sensitivity #20

Test Voltage 7.2kV Line-Ground

Location	Slow Beep	Fast Beep	Continuous
Side of Bar	11 ft.	9 ft.	7 ft.
End of Bar	10 ft.	7 ft.	6 ft.

Test Details

All of the warning distances are shown on a 1 foot grid and all distances are to scale.

The energized bar is 4 feet long and 30 inches above the ground on insulators. It is energized from behind and the indicated voltage is line to ground.

For this test, the V-Watch was worn on the shirt front as pictured. Warning distances will be reduced slightly if it is worn on the belt and will be reduced substantially if an arm is extended toward the energized source or if the user approaches the energized source backwards.



V-Watch Nominal Warning Distance
1 Ft. x 1 Ft. Grid

8/19/09



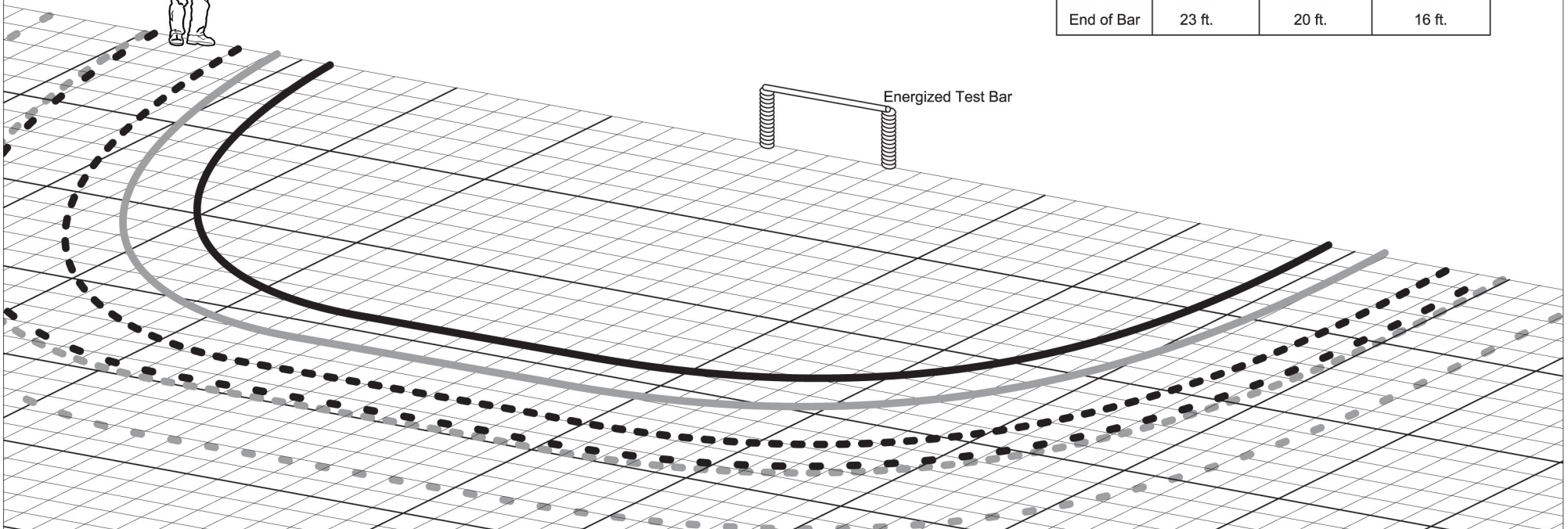
V-WATCH[®]

PERSONAL VOLTAGE DETECTOR



Sensitivity #20			
Voltage: 14.4kV Line-Ground			
Location	Slow Beep	Fast Beep	Continuous
Side of Bar	20 ft.	18 ft.	14 ft.
End of Bar	20 ft.	18 ft.	14 ft.

Sensitivity #20			
Test Voltage 19.9kV Line-Ground			
Location	Slow Beep	Fast Beep	Continuous
Side of Bar	23 ft.	20 ft.	16 ft.
End of Bar	23 ft.	20 ft.	16 ft.



Test Details

All of the warning distances are shown on a 1 foot grid and all distances are to scale.

The energized bar is 4 feet long and 30 inches above the ground on insulators. It is energized from behind and the indicated voltage is line to ground.

For this test, the V-Watch was worn on the shirt front as pictured. Warning distances will be reduced slightly if it is worn on the belt and will be reduced substantially if an arm is extended toward the energized source or if the user approaches the energized source backwards.



1 square foot

V-Watch Nominal Warning Distance
1 Ft. x 1 Ft. Grid

8/19/09