



4Sight2™

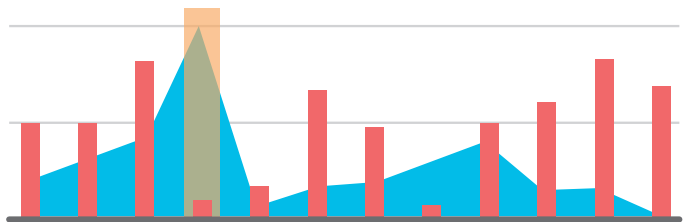
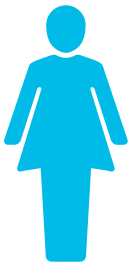
Smart, scalable and easy to use

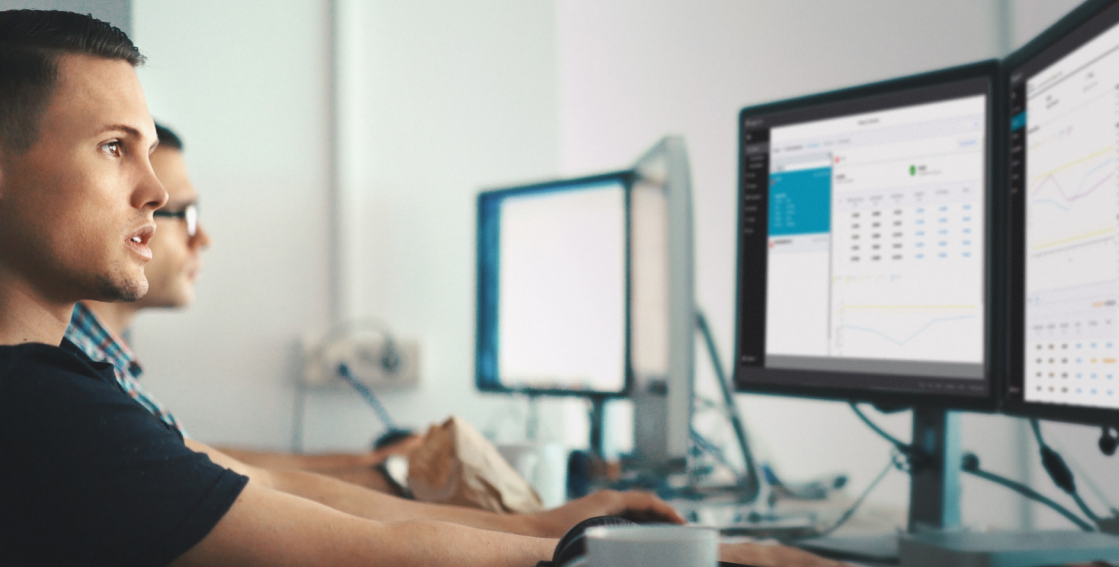
Calibration and asset management
software that works for you



Challenges in calibration and asset management

- Easy to use software systems
- Scalability
- Finding an effective software solution
- Consolidated records and data
- Accessible from mobile devices
- Cyber security
- Asset management
- Maintenance efficiency
- Managing complex data integration requirements
- Access to tailored support





Easy to use and Accessible

4Sight2 allows significantly lower investment costs and minimal IT requirement costs in terms of server support, upgrade management and data backup. Users can simply log in to the application software from a browser, with location and PC compatibility. Alternatively, 4Sight2 may be installed directly on a company server. We offer a range of supported installation options if required.

Compliant, Audit-ready, real time management

Managing your installed base of instrumentation can be a challenging task, regardless of its size. 4Sight2 offers seamless integration with BHGE's calibration equipment, providing automatic task downloads and direct uploads of results, removing the need for manual work arounds. 4Sight2 gives you simple control over calibration and maintenance workflow and data, along with automated worksheets and insights into performance management, ensuring compliant, audit-ready data.



Smart Asset Management

4Sight2 enables access to mobile paperless calibrations, automated field calibration and deviation management. Users can record the cause of deviations, investigate the reasons and focus on a resolution. The audit trail demonstrates that a robust solution is in place to manage deviations with strict procedures for corrective action and preventative action (CAPA), reducing operator error and improving overall quality.

Predictive maintenance

4Sight2's historical trending module allows a device's performance to be monitored over time. This powerful feature is a key tool in improving efficiency and planning preventative maintenance, helping to:

- Plan robust preventative actions
- Determine the most cost effective and reliable devices and manufacturers
- Extend calibration intervals
- Optimize your process

Enhancements

- Smart analytics
- Dashboard capability
- Maintenance module
- Automated calibrations with controllers
- Configurable certificates
- Messages and alerts
- SAAS
- Scalable support and service packages are available



Baker Hughes, a GE company (NYSE:BHGE) is the world's first and only fullstream provider of integrated oilfield products, services and digital solutions. Drawing on a storied heritage of invention, BHGE harnesses the passion and experience of its people to enhance productivity across the oil and gas value chain.

BHGE helps its customers acquire, transport and refine hydrocarbons more efficiently, productively and safely, with a smaller environmental footprint and at lower cost per barrel. Backed by the digital industrial strength of GE, the company deploys minds, machines and the cloud to break down silos and reduce waste and risk, applying breakthroughs from other industries to advance its own.

With operations in over 120 countries, the company's global scale, local know-how and commitment to service infuse over a century of experience with the spirit of a startup – inventing smarter ways to bring energy to the world.

**For more information please contact
your local BHGE representative, or visit
www.gemeasurement.com/test-calibration**

Powered by Predix™

© 2017. Baker Hughes, a GE company – All Rights Reserved

*4Sight2: Trademark of Baker Hughes, a GE company

**Predix: Trademark of the General Electric Company

BR-240A



gemeasurement.com/test-calibration