

HT6/5 1 1/2"



Norbar 'HandTorque' multipliers employ multiple stages of epicyclic gearing to give a wide range of torque outputs and ratios to suit most applications. Ratios quoted are always the torque multiplication ratio, not the velocity ratio as given for some competitor's products. For example, the velocity ratio may be 29.8:1 to give a torque multiplication of 25:1 $\pm 4\%$.

Part number: 16016

EAN Bar Code: -

NATO number: -

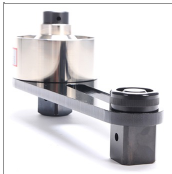
Accuracy: $\pm 4\%$

Operates between:

250.00 - 2500.00 lbf·ft

340.00 - 3400.00 N·m

34.00 - 340.00 kgf·m



TECHNICAL SPECIFICATIONS

- Tool Weight: 4.7 Kg
- Multiplication Ratio: 5:1
- Output Square: 1 1/2"
- Input Square: 3/4"
- Velocity Ratio: 5.454:1
- Max Input Speed: 21 revs/min
- Plate Weight: 2.5 Kg
- Plate Torque: 19 N.m

FEATURES

- A variety of reaction styles are available for maximum versatility.
- Electronic torque transducers can be fitted for precise torque monitoring.
- True torque multiplication guaranteed better than $\pm 4\%$.
- High ratios allow the use of a small torque wrench, multipliers can be used where access is limited.
- Anti Wind-Up Ratchet available on models of 25:1 ratio and above.

NORBAR TORQUE TOOLS LTD. Wildmere Road, Banbury, Oxfordshire,
OX16 3JU, United Kingdom
Registered Office as above - Registered in England No. 380480 - VAT No.
GB 119 1060 05

- Tel: + 44 (0) 1295 270333
- Enquiries: + 44 (0) 1295 753600
- After Sales : + 44 (0) 1295 753635
- Fax: + 44 (0) 1295 753609
- Email: enquiry@norbar.com
- Repairs: repairs@norbar.com