

B20S

Compact easy to use thermal imaging camera for daily operation

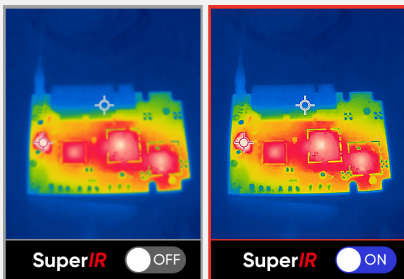


SuperIR



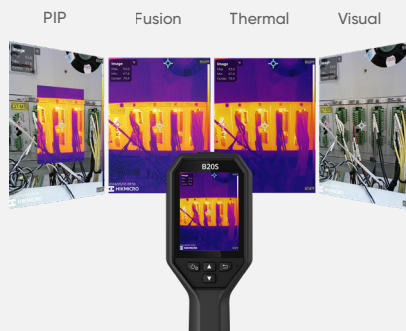
Enhanced Thermal Clarity with SuperIR

HIKMICRO's SuperIR image enhancement technology upscales the resolution of captured thermal images to 640 x 480 (307,200 pixels), significantly improving thermal image quality. It also provides a smooth 25 Hz image frequency for live viewing and photo capture.



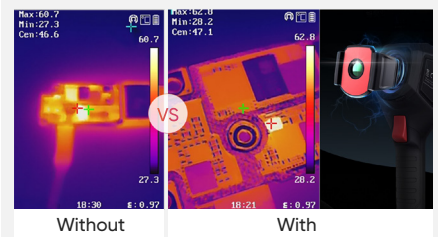
Multiple Image Modes

Fusion, Thermal, PIP and Visual modes to suit your preferred view.



Innovative Macro Mode

Using a clip-on macro lens, the B20S cameras can see details as small as 500 microns and allow you to take accurate temperature readings on small objects, such as components on printed circuit boards or assemblies.



3.2" Color LCD

View the details of your images on the large, class-leading LCD screen.



Efficient Temperature Measurement

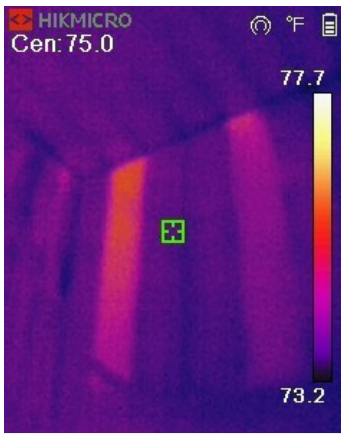
Track the temperature of Center, Hot, Cold spot and 3 Custom spots automatically.



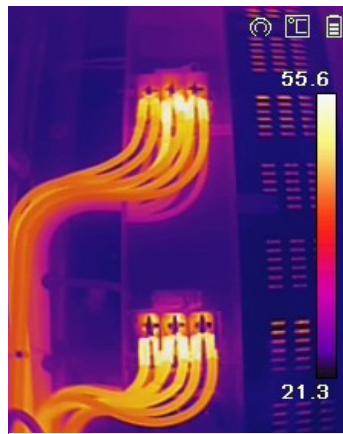
Wi-Fi Connectivity

Connect to mobile devices via built-in Wi-Fi and the HIKMICRO Viewer App to quickly share your images.

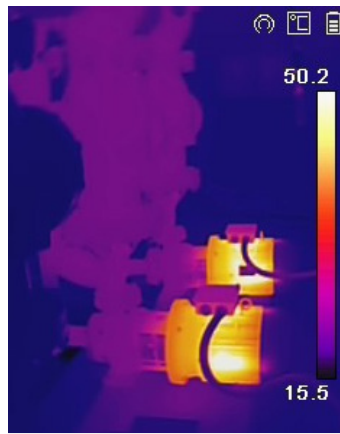
APPLICATIONS



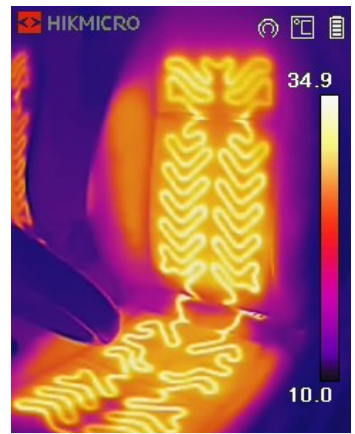
Building Envelope



Electrical Cabinet

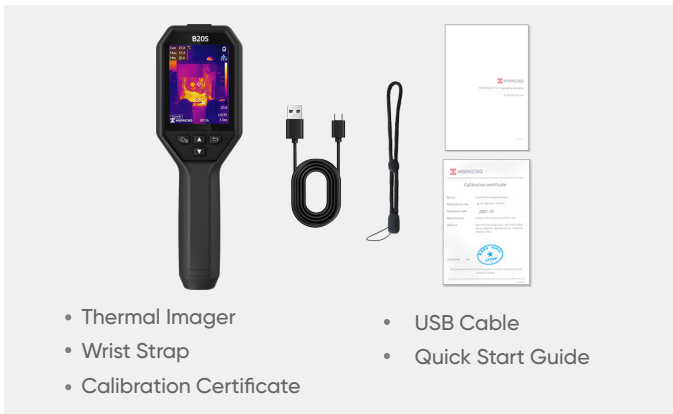


Mechanical Inspection



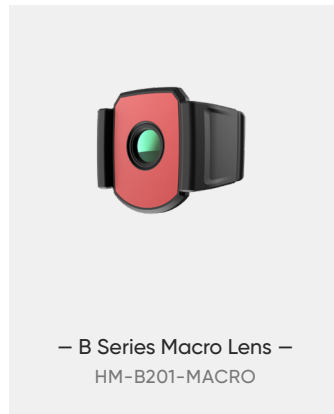
Automotive Inspection

WHAT'S IN THE BOX

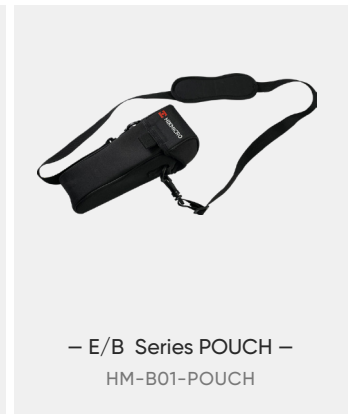


- Thermal Imager
- Wrist Strap
- Calibration Certificate
- USB Cable
- Quick Start Guide

OPTIONAL ACCESSORIES



– B Series Macro Lens –
HM-B201-MACRO



– E/B Series POUCH –
HM-B01-POUCH

Camera Highlights		B11	B21L	B20	B20S	
Infrared Image	IR Resolution	192 × 144 (27,648 pixels)	256 × 192 (49,152 pixels)			
	SuperIR	Yes, on Captured Thermal Images				Yes, on captured images and live view
	NETD	<0.04°C / NETD< 40mK				
	Image Frequency	25 Hz				
	Field of View (FOV)	27.8° × 37.2°	37.2° × 50.0°	37.2° × 50.0°		
	Focus Mode	Focus Free				
Image Display	Visual Camera	1600 × 1200 (2 MP)	N/A	1600 × 1200 (2 MP)		
	Image Modes	Thermal/Visual/PIP/Fusion	Thermal	Thermal/Visual/PIP/Fusion		
	Display	240 × 320 Resolution, 3.2"LCD Screen			480 × 640 Resolution, 3.2" LCD Screen	
Measurement and Analysis	Object Temperature Range	-20 °C to 550 °C (-4°F to 1022°F)				
	Accuracy	Max (±2°C/3.6°F, ±2%), for the ambient temp. 15°C to 35 °C (59 °F to 95 °F) and object temp. above 0 °C (32°F)				
Data Storage and Communication	Storage Media	Built-in 16 GB flash memory				
	File Format	Radiometric JPEG				
	Storage Capacity	Up to 90,000 images				
General	Durability	2m (6.56 ft) drop test, IP54				
	Wi-Fi	802.11 b/g/n (2.4GHz)				
	Led Flashlight	Yes	N/A	Yes		
	Laser Pointer	N/A	Yes	N/A		
	Battery Operating Time	Approx. 6 hours				