

FOTRIC 600

Fixed-mount Thermal Cameras

Tireless Monitoring Brings Peace of Mind!



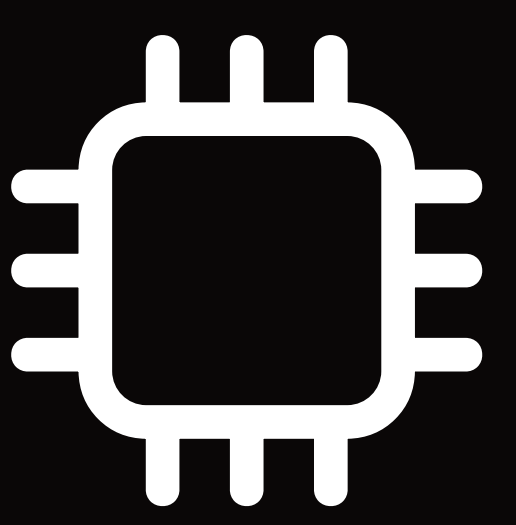
Open-source API SDK

Versatile SDK modular functions tailored to user's demands



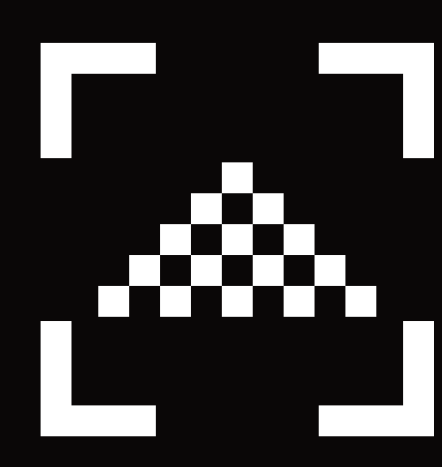
Practical in Harsh Conditions

With auto or manual focus, see through dust, smoke and fog even in darkness at -25° to 65°C



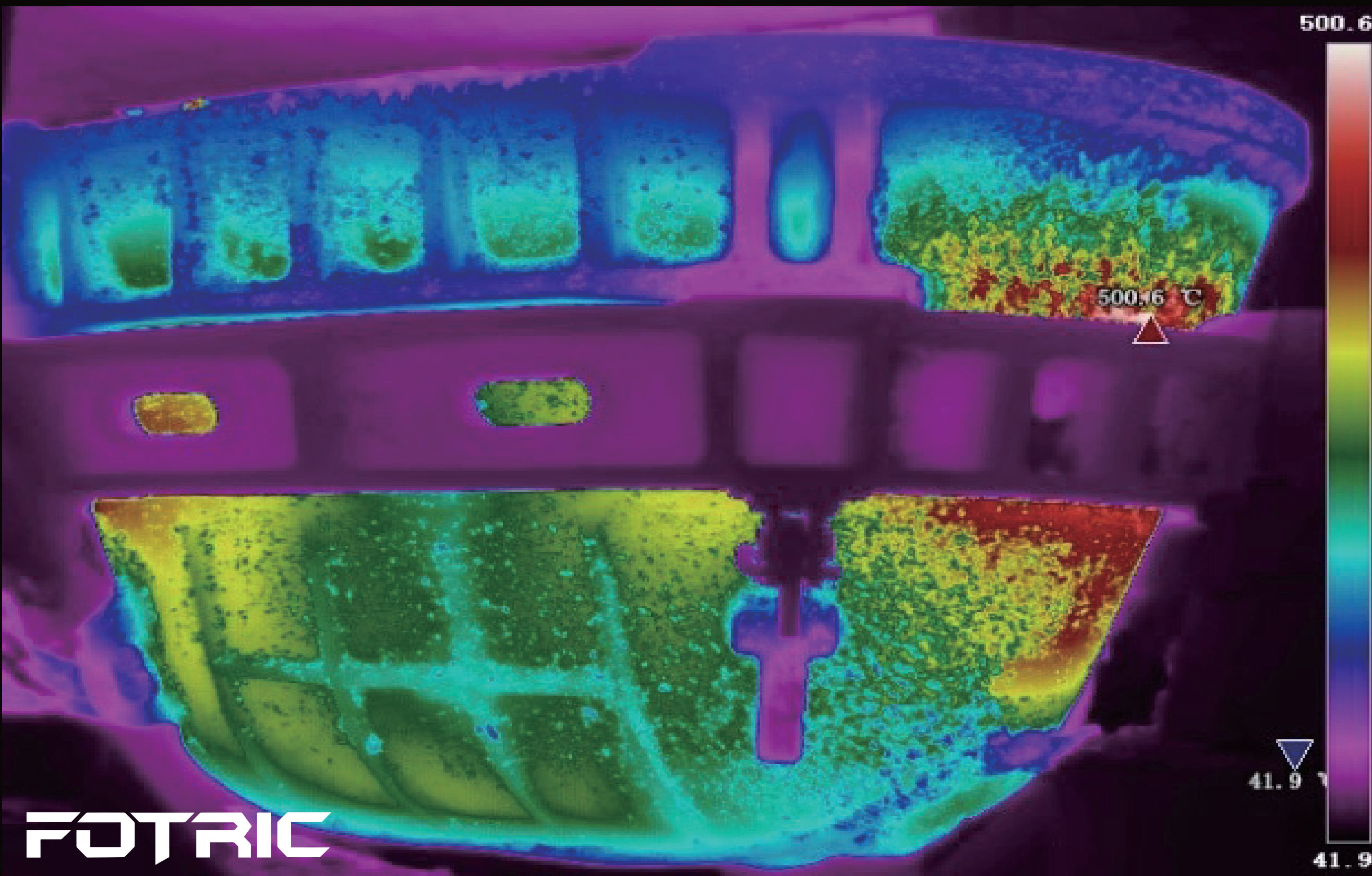
Accurate and stable

Performance guaranteed by top-end hardware from Lynred, Samsung, Xilinx and TI.

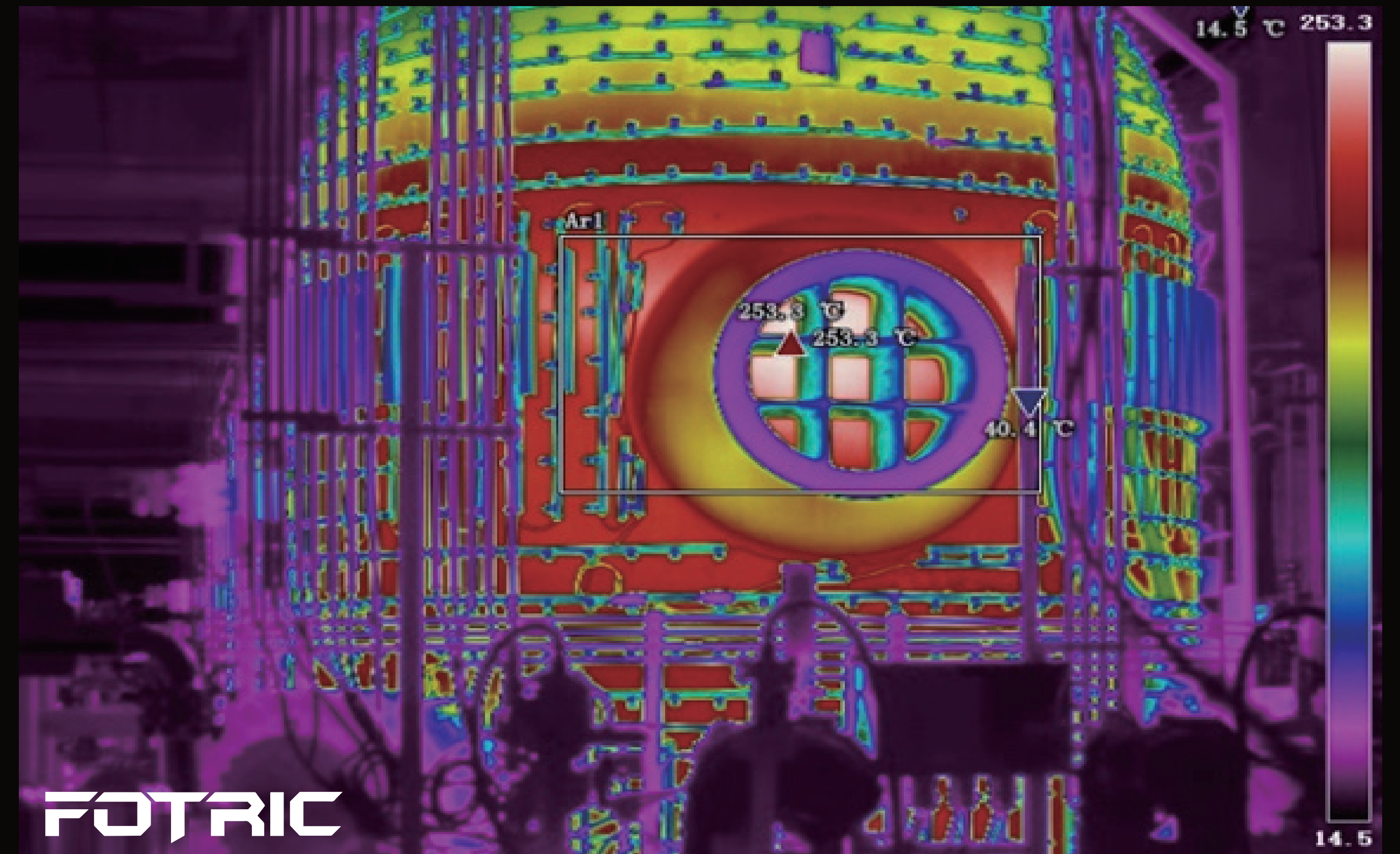


Various Applications

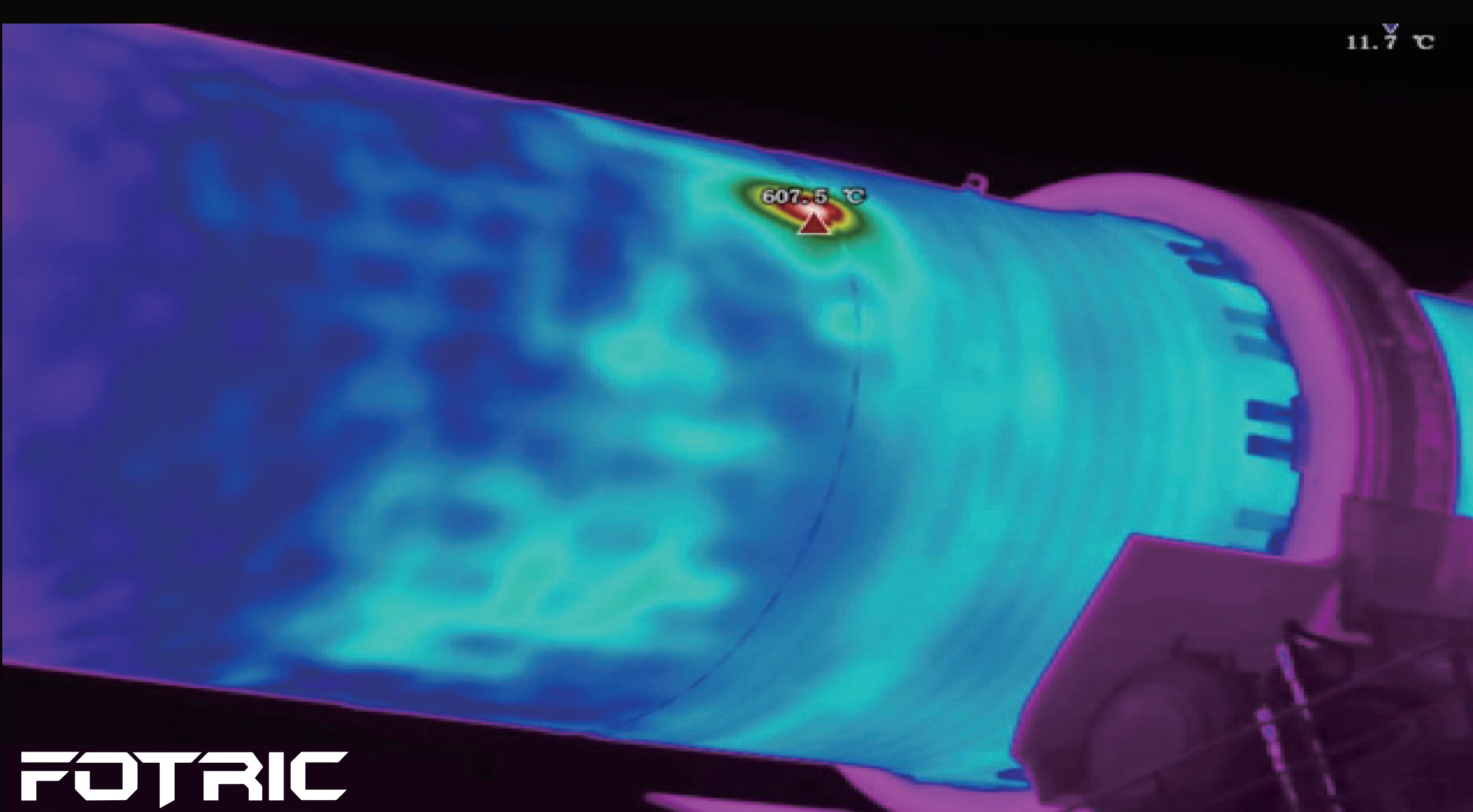
Detection range -20 to 2000°C ; Resolution up to 640×480 ; Sensitivity 0.03°C ; Lens 10° to 92°



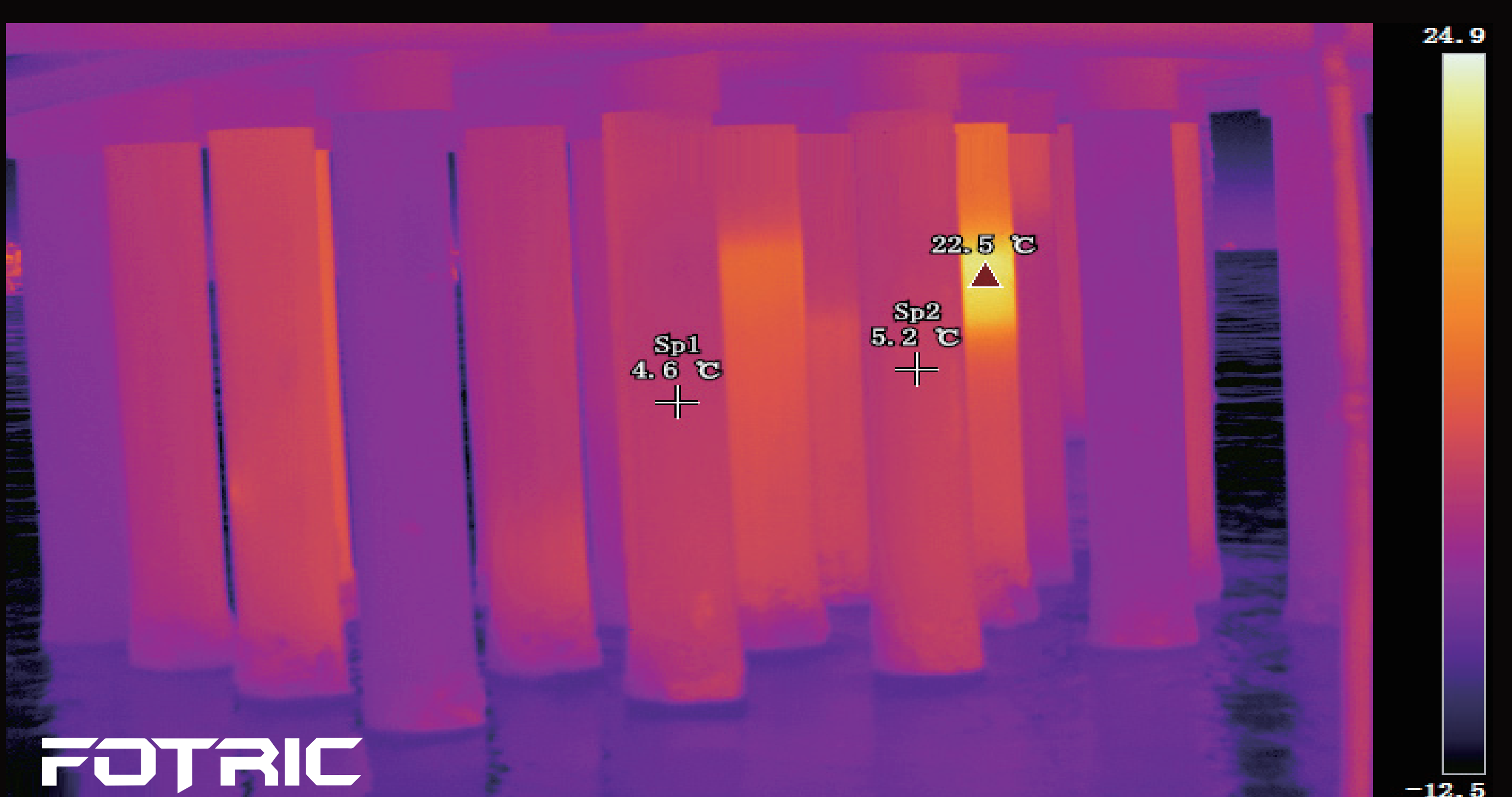
FOTRIC
Transport tank of molten iron in steel plant



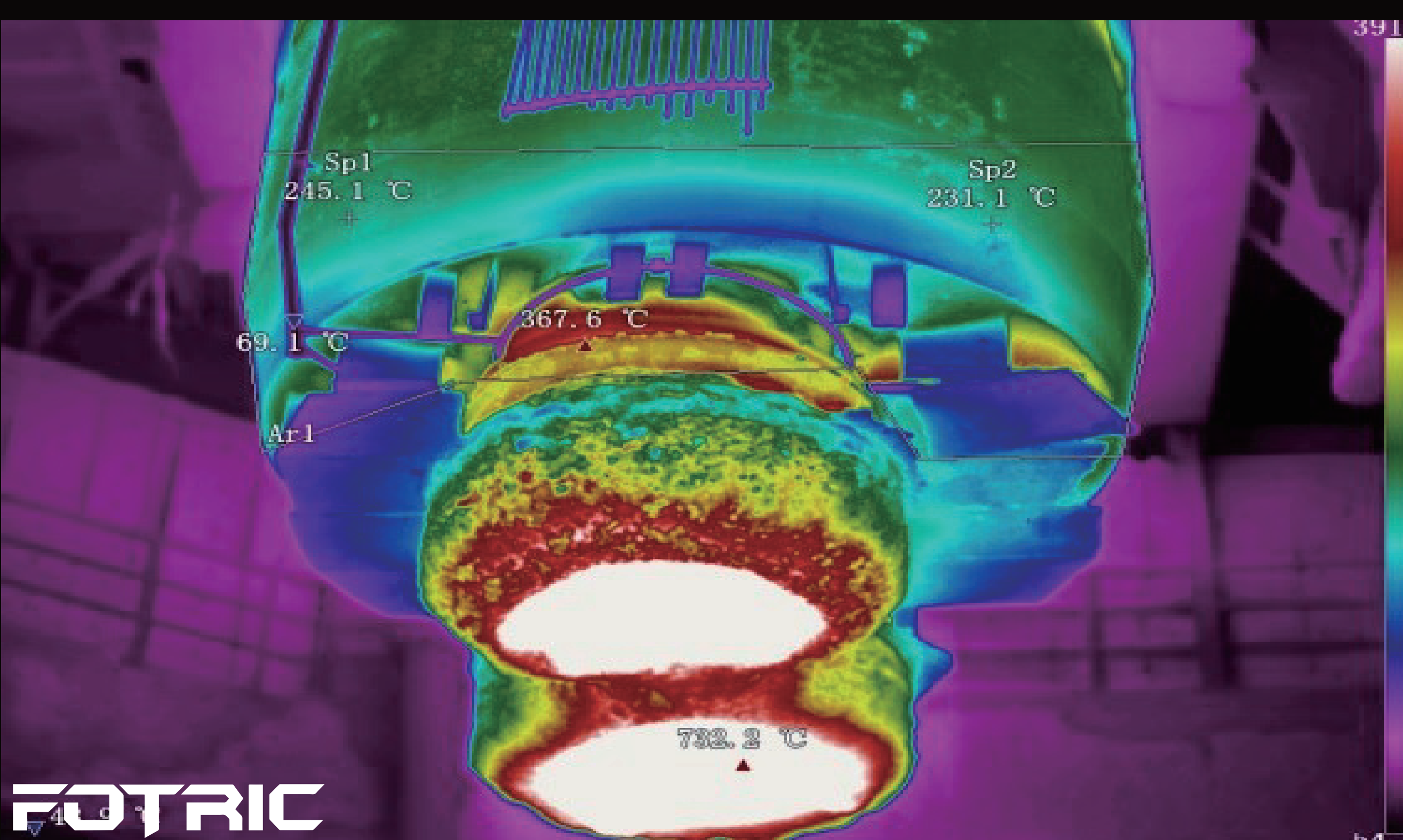
FOTRIC
Refractory material inspection of coal gasifier



FOTRIC
Refractory defect in rotary kiln of coking plant



FOTRIC
Heat anomaly of oil well casing



FOTRIC
RH refining furnace for steelmaking



FOTRIC
Heat anomaly of an isolating switch in substation