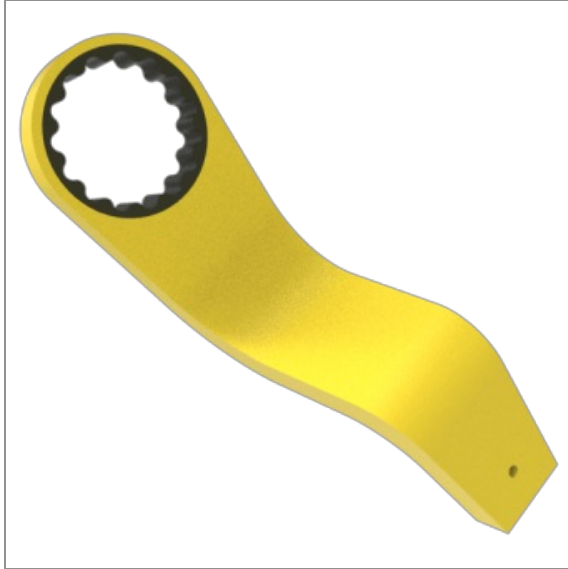


Cranked Reaction for PTS/PTM/ET/EBT-68



For use with PTS-68, PTM-68, ET-68 and EBT-68 manual, pneumatic and electronic torque multipliers.

Part number: 19611

EAN Bar Code: 5060922236203

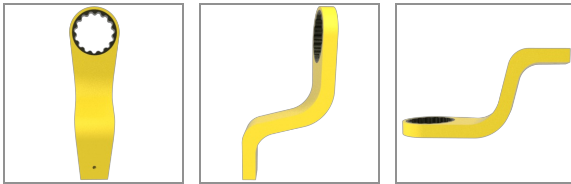
NATO number: -

Accuracy: -

Operates between:

0.00 - 2000.00 N·m

0.00 - 1475.00 lbf·ft



TECHNICAL SPECIFICATIONS

- Weight: 1.1 Kg
- Material: Steel
- Finish: Powder Coat Yellow

NORBAR TORQUE TOOLS LTD. Wildmere Road, Banbury, Oxfordshire, OX16 3JU,
United Kingdom
Registered Office as above - Registered in England No. 380480 - VAT No. GB
119 1060 05

- Tel: + 44 (0) 1295 270333
- Enquiries: + 44 (0) 1295 753600
- Email: enquiry@norbar.com
- After Sales: + 44 (0) 1295 753635
- Email: service@norbar.com