



NFPA 1801:2021 CERTIFIED

**DECISION MAKING TIC FOR FIREFIGHTING.
DURABLE, HIGH-RESOLUTION
THERMAL IMAGING CAMERA.**

KEY CAMERA SPECS

	Resolution	320 x 240
	Field of View	57° x 42°
	Durability	IP67 waterproof, 2 meter drop
	Detection	-20°C to 550°C (-4°F to 1022°F)
	Imaging	Mixed Gain with SV1
	Flashlight	300 Lumen LED



thermal.com



AttackPRO Kit: FQ-PANX
5yr Enhanced Warranty: WA-5USATTACKPRO

Designed with firefighters for firefighters, the NFPA Certified AttackPRO+ thermal imaging camera offers an unmatched combination of image quality, durability, and price.

With its high resolution and wide field of view, AttackPRO+ is the new decision-making weapon of choice for captains and commanding officers. Mixed-gain pixel technology eliminates the visual confusion and delay of switching between high-gain and low-gain modes. AttackPRO+ lets you clearly see the fire and the crew, all in one detailed image.

The kit includes the AttackPRO+ camera, 2 batteries, and a charging dock.

Designed and Manufactured in the USA with Global Components. Thermal sensor designed and manufactured by Seek in Santa Barbara, CA USA



KEY FEATURES

Mixed Gain with SV1 Image Optimization
See the hottest and coolest regions of the scene simultaneously without freezing or switching gain modes; details enhanced with SV1

Durable, Waterproof Design
Durable and reliable design built with IP67 rating and 2 meter drop resistance

Wide, 57-Degree Field of View
Easily scan a large area to identify hazards or victims in seconds

Long-Lasting Rechargeable Battery
Greater than 6 hours of continuous thermal imaging

Simple Operation. Purpose-Built for the Fire Gound
One button thermal operation, no confusing menus or settings, Get the job done efficiently and consistently

BENEFITS

Decision Making on Command
Direct Firefighters, water, and resources with expedited tactical precision

Robust Personal TIC
Equip the entire department with the first affordable decision making TIC

See Through Smoke. Flashlight Optional.
300 lumen LED flashlight available at the touch of a button

Search and Rescue
Find victims and self-rescue faster with a reliable personal TIC

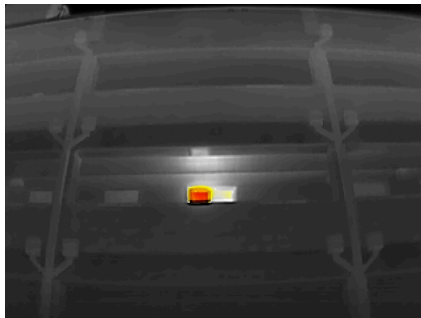
Execute 360 Size-ups & Overhaul Faster
When seconds count, a Seek decision-making TIC saves time and lives

TECHNICAL SUMMARY

SPECIFICATIONS	DESCRIPTION
Thermal Sensor	320 x 240 (76,800 pixels)
Detection Distance	12 inches to 1,000 feet
Field of View	57° HFOV, 42° VFOV
Temperature Range	-4 to 1,022°F (-20 to 550°C)
Operating Temp	-4 to 131°F (-20 to 55°C) - no time limit up to 302°F (150°C) - max 15 min up to 500°F (260°C) - max 5 min
Frame Rate	> 25 Hz Fast Frame
IP Rating	IP67 Waterproof
Flashlight	300 Lumen LED
Display	3.5" Color with Corning® Gorilla® Glass
Thermal Sensitivity	< 35 mK with SV1
User Interface	On device 2 tactile button operation
Temp. Display Scale	Fahrenheit or Celsius
Image modes	2 Options (TIBASIC-default, and TIBASIC+)
Storage Media	NA
Battery	>6 Hours Thermal Imaging (w/o flashlight); >3hrs (with thermal AND flashlight)

For support and user guides visit thermal.com

THERMAL APPLICATIONS



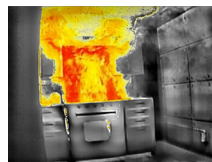
360 SIZE UP



FIRE ATTACK



OVERHAUL



300 LUMEN LED LIGHT



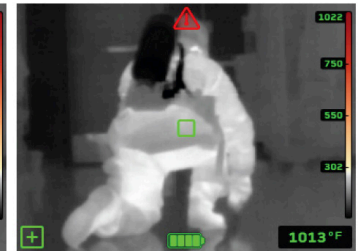
Seek AttackPRO+ combines powerful thermal insight and a bright LED flashlight in an intuitive, two button interface.

USER INTERFACE



TI BASIC

Maintain your situational awareness with a simple and decluttered display showing greyscale and colorized regions



TI BASIC+

Enhance your tactics with a spot temp readout while still maintaining greyscale and colorized regions

Seek more at thermal.com

6300 Hollister Ave, Santa Barbara, CA 93117

Seek Thermal engineers, designs and manufacturers high quality thermal imaging products and core platforms for consumer, commercial, and heat sensing IoT data applications. With headquarters in Santa Barbara, California, the global hub of thermal imaging innovation, the company has developed breakthrough thermal imaging camera cores that will enable a range of affordable products for use at home, work and play. For more information visit thermal.com and follow #seekthermal on Instagram and @seekthermal on Twitter.

SKU: FD-SAA



TECHNICAL SUMMARY

SPECIFICATIONS	DESCRIPTION
AC INPUT	100-240 VAC 50/60 HZ, 0.5 A
SUPPLY VOLTAGE	5VDC
POWER RATING	10W
ENVIRONMENTAL	INTENDED FOR INDOOR USE
INCLUDED IN THE BOX	DESKTOP CHARGER CRADLE POWER SUPPLY INCLUDING AC PLUGS FOR US, EU, UK

For support and user guides visit thermal.com

Seek more at thermal.com

6300 Hollister Ave, Santa Barbara, CA 93117

Seek Thermal engineers, designs and manufactures high quality thermal imaging products and core platforms for consumer, commercial, and heat sensing IoT data applications. With headquarters in Santa Barbara, California, the global hub of thermal imaging innovation, the company has developed breakthrough thermal imaging camera cores that will enable a range of affordable products for use at home, work and play. For more information visit thermal.com and follow #seekthermal on Instagram and @seekthermal on Twitter.

SKU: FA-BAA



TECHNICAL SUMMARY

SPECIFICATIONS	DESCRIPTION
BATTERY MATERIAL	LITHIUM ION
NOMINAL VOLTAGE	3.63 V
NOMINAL CAPACITY	4900 mAh
OPERATING TEMPERATURE RANGE	DURING DISCHARGE: -20°C TO 60°C DURING CHARGING: 0°C TO 45°C
WEIGHT	115g
SIZE	170 X 45 X 43 mm
COMPATIBLE WITH	FQ-PPAX FQ-PPNX

For support and user guides visit thermal.com

Seek more at thermal.com

6300 Hollister Ave, Santa Barbara, CA 93117

Seek Thermal engineers, designs and manufactures high quality thermal imaging products and core platforms for consumer, commercial, and heat sensing IoT data applications. With headquarters in Santa Barbara, California, the global hub of thermal imaging innovation, the company has developed breakthrough thermal imaging camera cores that will enable a range of affordable products for use at home, work and play. For more information visit thermal.com and follow #seekthermal on Instagram and @seekthermal on Twitter.