

AttackPRO VRS

EVERYTHING YOU LOVE ABOUT ATTACKPRO,
NOW WITH VIDEO RECORDING, SURVEY MODE,
AND A HIGHER TEMPERATURE RANGE.

KEY CAMERA SPECS

| | | |
|---|---------------|----------------------------------|
|  | Resolution | 320 x 240 |
|  | Field of View | 57° x 42° |
|  | Durability | IP67 waterproof, 2 meter drop |
|  | Detection | -20°C to 650°C (-4°F to 1,200°F) |
|  | Imaging | Mixed Gain with SV1 |
|  | Flashlight | 300 Lumen LED |

Seek[™]
thermal

thermal.com



AttackPRO Kit: FQ-PAVX
5yr Enhanced Warranty: WA-5USATTACKPRO

Designed with firefighters for firefighters, the AttackPRO™ VRS is the latest addition to the AttackPRO Series.

AttackPRO VRS builds on the unmatched image quality, durability, and affordability of the original AttackPRO. It now features video recording, a higher temperature range up to 650°C, and includes Survey Mode to enhance size-up and overhaul operations.

With high-resolution, mixed-gain pixel technology, AttackPRO VRS ensures clear visibility of both fire and crew in one detailed image. The kit includes the camera, 2 batteries, and a charging dock.

Designed and Manufactured in the USA with Global Components.
Thermal sensor designed and manufactured by Seek in Santa Barbara, CA USA



KEY FEATURES

Video Recording + 650°C Detection + Survey Mode

Record up to 5 hours of video on AttackPRO's 32GB internal drive

Mixed Gain with SV1 Image Optimization

See the hottest and coolest regions of the scene simultaneously without freezing or switching gain modes; details enhanced with SV1

Durable, Waterproof Design

Durable and reliable design built with IP67 rating and 2 meter drop resistance

Wide, 57-Degree Field of View

Easily scan a large area to identify hazards or victims in seconds

Long-Lasting Rechargeable Battery

Greater than 6 hours of continuous thermal imaging

BENEFITS

Decision Making on Command

Direct Firefighters, water, and resources with expedited tactical precision

Robust Personal TIC

Equip the entire department with the first affordable decision making TIC

See Through Smoke. Flashlight Optional.

300 lumen LED flashlight available at the touch of a button

Search and Rescue

Find victims and self-rescue faster with a reliable personal TIC

Execute 360 Size-ups & Overhaul Faster

When seconds count, a Seek decision-making TIC saves time and lives

TECHNICAL SUMMARY

| SPECIFICATIONS | DESCRIPTION |
|---------------------|--|
| Thermal Sensor | 320 x 240 (76,800 pixels) |
| Detection Distance | 12 inches to 1,000 feet |
| Field of View | 57° HFOV, 42° VFOV |
| Temperature Range | -4 to 1,200°F (-20 to 650°C) |
| Operating Temp | -4 to 131°F (-20 to 55°C) - no time limit up to 302°F (150°C) - max 15 min up to 500°F (260°C) - max 5 min |
| Frame Rate | > 25 Hz Fast Frame |
| IP Rating | IP67 Waterproof |
| Flashlight | 300 Lumen LED |
| Display | 3.5" Color with Corning® Gorilla® Glass |
| Thermal Sensitivity | < 35 mK with SV1 |
| User Interface | On device 2 tactile button operation |
| Temp. Display Scale | Fahrenheit or Celsius |
| Image modes | 3 Options (TI-BASIC, TI-BASIC+ & Survey Mode) |
| Video Recording | 5 Hours of video recording (32GB Internal drive) |
| Photo Capture | No |
| Battery | >6 Hours Thermal Imaging (w/o flashlight); >3hrs (with thermal AND flashlight) |

For support and user guides visit thermal.com

300 LUMEN LED LIGHT



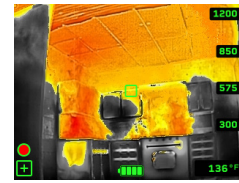
Seek AttackPRO VRS combines powerful thermal insight and a bright LED flashlight in an intuitive, two button interface.

MODES



TI BASIC

Maintain your situational awareness with a simple and decluttered display showing greyscale and colored regions



TI BASIC+

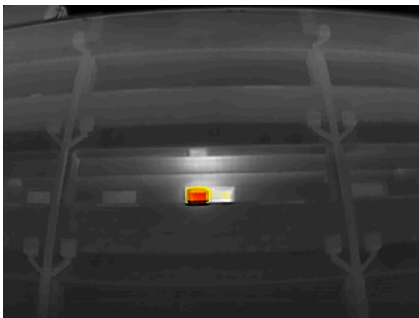
Enhance your tactics with a spot temp readout while still maintaining greyscale and colorized regions



SURVEY MODE

Investigative mode with early colorization at 65C (150F) ideal for size up, bells & smells, and overhaul

THERMAL APPLICATIONS



360 SIZE UP



FIRE ATTACK



OVERHAUL



Seek more at thermal.com

6300 Hollister Ave, Santa Barbara, CA 93117

Seek Thermal engineers, designs and manufacturers high quality thermal imaging products and core platforms for consumer, commercial, and heat sensing IoT data applications. With headquarters in Santa Barbara, California, the global hub of thermal imaging innovation, the company has developed breakthrough thermal imaging camera cores that will enable a range of affordable products for use at home, work and play. For more information visit thermal.com and follow #seekthermal on Instagram and @seekthermal on Twitter.

SKU: FD-SAA



TECHNICAL SUMMARY

| SPECIFICATIONS | DESCRIPTION |
|---------------------|--|
| AC INPUT | 100-240 VAC 50/60 HZ, 0.5 A |
| SUPPLY VOLTAGE | 5VDC |
| POWER RATING | 10W |
| ENVIRONMENTAL | INTENDED FOR INDOOR USE |
| CHARGE TIME | 6 HOURS |
| INCLUDED IN THE BOX | DESKTOP CHARGER CRADLE POWER SUPPLY INCLUDING AC PLUGS FOR US, EU, UK |

For support and user guides visit thermal.com

Seek more at thermal.com

6300 Hollister Ave, Santa Barbara, CA 93117

Seek Thermal engineers, designs and manufactures high quality thermal imaging products and core platforms for consumer, commercial, and heat sensing IoT data applications. With headquarters in Santa Barbara, California, the global hub of thermal imaging innovation, the company has developed breakthrough thermal imaging camera cores that will enable a range of affordable products for use at home, work and play. For more information visit thermal.com and follow #seekthermal on Instagram and @seekthermal on Twitter.

SKU: FA-BAA



TECHNICAL SUMMARY

| SPECIFICATIONS | DESCRIPTION |
|-----------------------------|---|
| BATTERY MATERIAL | LITHIUM ION |
| NOMINAL VOLTAGE | 3.63 V |
| NOMINAL CAPACITY | 4900 mAh |
| OPERATING TEMPERATURE RANGE | DURING DISCHARGE: -20°C TO 60°C DURING CHARGING: 0°C TO 45°C |
| WEIGHT | 115g |
| SIZE | 170 X 45 X 43 mm |
| COMPATIBLE WITH | FQ-PPAX FQ-PPNX FQ-PPVX |

For support and user guides visit thermal.com

Seek more at thermal.com

6300 Hollister Ave, Santa Barbara, CA 93117

Seek Thermal engineers, designs and manufactures high quality thermal imaging products and core platforms for consumer, commercial, and heat sensing IoT data applications. With headquarters in Santa Barbara, California, the global hub of thermal imaging innovation, the company has developed breakthrough thermal imaging camera cores that will enable a range of affordable products for use at home, work and play. For more information visit thermal.com and follow #seekthermal on Instagram and @seekthermal on Twitter.