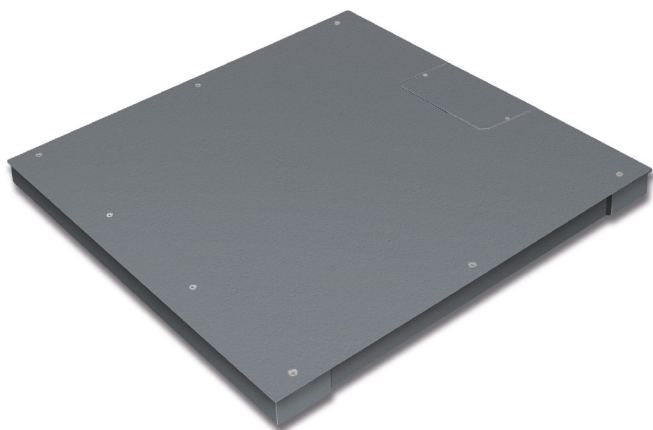


# KERN KFP3000V20LNM

Weighing bridge, screwed, lacquered with IP67



Material weighing plate:	Steel lacquered
Revolving screw feet:	yes
Weighing surface (WxD):	1500 x 1500 mm

## Piktogramme

### STANDARD



### FACTORY



## Measuring system

Load cell connection:	6-wire
Readability [d]:	1 kg
Weighing capacity [Max]:	3 t

## Technical data about verification

Minimum load [Min]:	20 kg
Periodic Verification for Italy:	969-112
Verification by KERN possible:	yes
Verification class:	III
Verification value [e]:	1 kg

## Environmental conditions

Maximum operating temperature:	40 °C
--------------------------------	-------

## Services (optional)

DAkkS Certificate:	963-132
Verification:	965-232

## Category

Brand:	KERN
Category:	Platforms
Product Group:	Weighing bridge

## Packaging & shipping

Delivery:	48 h
Dimensions packaging (WxDxH):	1610 x 1570 x 360 mm
Gross weight:	234 kg
Net weight:	171 kg
Shipping method:	Freight forwarder

## Construction

Cable length:	5 m
Dimensions of weighing plate (WxDxH):	1500 x 1500 x 80 mm