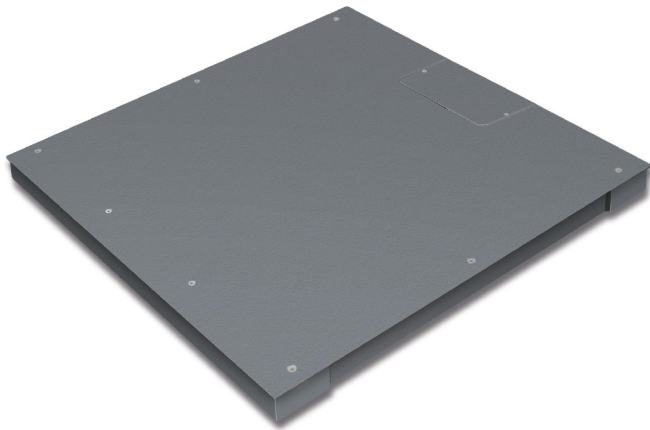


# KERN KFP 1500V20SNM

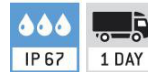
Weighing bridge, screwed, lacquered with IP67



|                          |                 |
|--------------------------|-----------------|
| Material weighing plate: | Steel lacquered |
| Revolving screw feet:    | yes             |
| Weighing surface (WxD):  | 1000 x 1000 mm  |

## Piktogramme

### STANDARD



### FACTORY



## Measuring system

|                          |         |
|--------------------------|---------|
| Load cell connection:    | 6-wire  |
| Readability [d]:         | 500 g   |
| Weighing capacity [Max]: | 1,500 t |

## Technical data about verification

|                                  |         |
|----------------------------------|---------|
| Minimum load [Min]:              | 10 kg   |
| Periodic Verification for Italy: | 969-112 |
| Verification by KERN possible:   | yes     |
| Verification class:              | III     |
| Verification value [e]:          | 500 g   |

## Environmental conditions

|                                |        |
|--------------------------------|--------|
| Maximum operating temperature: | 40 °C  |
| Minimum ambient temperature:   | -10 °C |

## Services (optional)

|                    |         |
|--------------------|---------|
| DAkkS Certificate: | 963-130 |
| Verification:      | 965-230 |

## Category

|                |                 |
|----------------|-----------------|
| Brand:         | KERN            |
| Category:      | Platforms       |
| Product Group: | Weighing bridge |

## Packaging & shipping

|                               |                      |
|-------------------------------|----------------------|
| Delivery:                     | 48 h                 |
| Dimensions packaging (WxDxH): | 1050 x 1050 x 260 mm |
| Gross weight:                 | 123 kg               |
| Net weight:                   | 97 kg                |
| Shipping method:              | Freight forwarder    |

## Construction

|                                       |                     |
|---------------------------------------|---------------------|
| Cable length:                         | 5 m                 |
| Dimensions of weighing plate (WxDxH): | 1000 x 1000 x 80 mm |