

KANE79

Carbon Monoxide Monitor
and Personal CO Alarm

KANE  **LINK**



THE QUEEN'S AWARDS
FOR ENTERPRISE:
INNOVATION
2022




Stock No: MAN00293 Rev: 1.01122

NOVEMBER 2022

CONTENTS

Page No.

1	KANE79 OVERVIEW & SAFETY WARNING	3-4
2	KANE79 FEATURES AND KEYPAD	5
3	OPERATING INSTRUCTIONS	6-7
4	MEASURING CO	8
5	VISUAL INDICATION	9
6	AUDIBLE & VIBRATING ALARMS	10
7	BATTERY STATUS	10
8	REPLACING BATTERY	11
9	KANE  LINK	12
10	TROUBLESHOOTING	13
11	SPECIFICATIONS	14
12	CLEANING	15
13	COLD WEATHER PRECAUTIONS	16
14	WHERE TO SEND YOUR ANALYSER	16
15	EU DECLARATON OF CONFORMITY	17
16	KANE CARE	18-21
17	KANE & UKAS	22
18	RECYLING	23
19	THANK YOU	24

1

KANE79 OVERVIEW

Your KANE79 monitors carbon monoxide (CO) levels in any indoor area where people may work or live.

Your KANE79 is easy to use in any normal working environment.

Do not use in areas designated as “confined spaces” where other toxic gases may present or in zoned areas where intrinsic safety products are mandatory.

Your KANE79 Carbon Monoxide monitor features:

- Measures to 999ppm CO
- Long life CO sensor with 5 year expected life
- Captures maximum value
- Preset alarm
- Vibrating alarm
- Visual colour LED
- Audible tone
- Data hold
- Battery Indication

KANE LINK

- Wirelessly connect up to 4 KANE79 CO monitors to your KANE LINK analyser
- When powered on, they replace or add measurements to your KANE LINK analyser
- See page 12 to add, manage or delete your KANE LINK device

 **SAFETY WARNING!**



CO is life threatening even at low concentrations.

Ensure you understand the risks before investigating

This monitor measures combustion gases that may be toxic in relatively low concentrations.

This monitor must only be used by trained and competent persons after due consideration of all the potential hazards.

Portable gas monitor users should conduct “bump” test before relying on the monitor to verify atmospheres are free from hazards.

A “bump” test is a way to check a monitor works within acceptable limits by briefly exposing it to known gas mixtures formulated to change output of all sensors present.

NOTE: This is different from calibration where the monitor is exposed to known gas mixtures but allowed to settle to a steady figure with readings adjusted to the gas concentration of the test gas.

A bump test can be conducted using a disposable canister of CO sometimes used to check domestic CO alarms.

2

KANE79 FEATURES AND KEYPAD



3

OPERATING INSTRUCTIONS

Every button press makes an audible beep

**WARNING!**

Always power on in outdoor fresh air away from boiler flues, vehicle exhausts, bbq, smokers and any other sources of CO.

1. Power on by pressing On/Off button
2. Zero countdown starts at 30



3. Monitor then displays CO in ppm 3 digits.

Battery level indicator is displayed in top left corner

CO ppm scale is displayed in bottom right corner

4. A normal display looks like this



5. Press power On/Off

6. Displaying Maximum CO measured

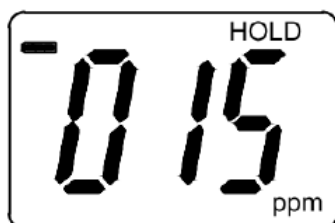


Press MAX  to display highest measurement while monitor is ON

Press again to return to current value

Maximum value is reset when monitor powered off & on

7. Freeze or hold display



Press  to freeze or hold display

Press again to return display to current value

Hold value is reset when monitor powered off & on

8. Press power On/Off for 3 seconds to power off monitor

NOTE:

After use, always expose monitor to fresh air until readings fall below 5ppm, before powering off monitor.

Note: Readings fall slowly so you may need to wait some minutes.

4

MEASURING CO

Note: Ensure monitor sensor cover is free from obstruction.

KANE79 is an ambient air monitor

This means it will check for spillages around fires or cookers but does not replace tests requiring specific appliance sampling probes specified, for example, in BS7967.

Do not expose monitor to ambient temperatures above 40°C

Do not use monitor to directly measure flue gases.

**WARNING!**

If CO levels in a room or space exceed 20ppm

1. Switch off all appliances
2. Evacuate and ventilate the room or space
3. Contact Emergency Services

5 VISUAL INDICATION

These values are based on known environmental and health standards:

Concentration of CO in air	Inhalation Times and Toxic Symptoms
10ppm	Maximum allowable concentration for an 8 hour period without any known health risks according to the UK Department of Health and British Standards BS7967
30ppm	Maximum allowable concentration for competent persons to work in when investigating reports of fumes according to British Standards BS7967
200ppm	Mild headache, fatigue, dizziness and nausea after 2 to 3 hours
400ppm	Frontal headache and nausea within 1 to 2 hours. Life threatening after 3 hours
800ppm	Severe headache, dizziness and convulsions with 45 minutes. Unconsciousness within 2 hours. Death within 2 to 3 hours
1,600ppm	Headache, dizziness and nausea within 20 minutes. Death within 1 hour
3,200ppm	Headache, dizziness and nausea within 5 to 10 minutes, Death within 30 minutes
6,200ppm	Headache, dizziness and nausea within 1 to 3 minutes. Death within 10 to 15 minutes
12,800ppm	Death within 1 to 3 minutes

WARNING!

Effects vary depending on size, age, sex and health - we are not liable for the accuracy of the information.

ZERO concentration of CO in air is your objective.

6 AUDIBLE & VIBRATING ALARM

Your KANE79 has 3 alarm levels:

CO Levels	Indication
2-9ppm	Green LED flash once every 3 seconds
10-19ppm	Red LED flash once every 2 seconds
> 20ppm	Red LED flash once per second, sound and vibration active

7 BATTERY STATUS

Full battery



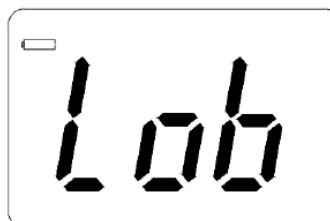
Low battery



Do not use when battery symbol is low or empty - Replace battery immediately.

If battery levels fall to a level where accuracy may be compromised, monitor will give audible & visual warning then power off.

Low battery alarm
before power off



 **WARNING!**

Do not ignore warnings - your safety may be compromised.

8

REPLACING BATTERY

KANE79 battery compartment is located underneath the belt clip - Belt clip is spring loaded to prevent rotation in normal use.



1. Lift belt clip at pivot end against the spring by a few millimeters then rotate 90 degree to clear battery compartment cover.



2. Remove cover and replace battery - We recommended alkaline batteries.

Always recycle spent battery through an approved battery recycling scheme.

3. Replace cover and rotate belt clip back to normal position.

WARNING!

Always check your monitor for correct operation after replacing battery and always zero in outdoor fresh air.

9 KANE LINK

Powering on your KANE79 activates KANE LINK - an automatic wireless link to your KANE LINK analyser.

You can connect up to 4 KANE79 to your KANE LINK analyser

To connect, find your KANE79 serial number on reverse of belt clip and prepare your KANE LINK analyser to add your KANE79 serial number.



Enter KANE79 serial number in your analyser - once entered, readings are automatically sent whenever powered on & connected to your analyser

NOTE:

Serial number must be 10 digits long - If shorter, enter 0's to make up to 10

For example - enter serial number J12345678 as 0012345678

Other KANE LINK devices can be paired - Contact KANE for more details

If display fails to zero within minutes the sensor has reached end of life or was exposed to excessive levels of CO - Contact KANE if this continues.

Always check for correct operation before each use.

To test your KANE79, use a known source of CO taking care to act in a safe manner and not expose sensor to extreme temperatures or CO concentrations - Contact KANE if in doubt.

If during use you detect CO leaks, ensure you know what action to take to protect yourself and others.

After use, always expose monitor to fresh air until readings fall below 5ppm, before powering off monitor.

Note: Readings fall slowly so you may need to wait some minutes.

11 SPECIFICATIONS

Range:	0-999ppm
Resolution:	1ppm
Accuracy:	±3ppm 0 to 100ppm ¹ ±5% reading > 101ppm
Audible Alarm:	See page 11
Visual Indication:	LCD and LED
Battery:	9V alkaline PP3
Battery Life:	Up to 250 hours ² Duracell Procell
Ambient Temperature:	0-40°C (32-104°F)
Warranty:	1 Year

¹ As per EN 50543 : 2011

² Based on normal use without alarms.

NOTE:

No user serviceable parts

Recertify every 12 months

Check for correct operation using this manual before use

Clean this monitor with a lint free damp cloth and a small quantity of non-abrasive detergent.

Avoid moisture entering the sensor cover and after cleaning, leave in a warm dry place to evaporate any surface dampness.

Do not use solvent cleaner - It may damage the case, display & sensor.

13

COLD WEATHER PRECAUTIONS

Do not leave your monitor in a cold place overnight.

Electronic devices that become cold suffer when taken into a warm place. Condensation may form affecting performance.

Sensors are affected by condensation or water. When this happens, readings may display as “-” & sensors may be permanently damaged.

If your monitor is affected by condensation or water ingress, leave in a warm place for a few hours.

If you still experience problems please contact KANE Customer Service.

14

WHERE TO SEND YOUR ANALYSER - see section 16

Northern Customer Service
Kane International Ltd
Gibfield Park Avenue
Atherton,
Manchester
M46 0SY, UK
e: nservice@kane.co.uk
t: 0800 059 0800

Southern & International Customer Service
Kane International Ltd
Kane House, 11 Bessemer Road
Welwyn Garden City
Hertfordshire
AL7 1GF, UK
e: service@kane.co.uk
t: 0800 059 0800

Outside UK Call +44 1707 375550

EU DECLARATON OF CONFORMITY

This declaration of conformity is issued under the sole responsibility of the manufacturer:-

Kane International Ltd.

Kane House, 11 Bessemer Road, Welwyn Garden City, Hertfordshire, AL10 1GF, UK.

Tel: + 1707 375550

Web: www.kane.co.uk

The KANE79 is in conformity with the relevant Union harmonization legislation below:

UK Directive	
The Electromagnetic Compatibility Regulations 2016 (EMC)	
The Restriction of the Use of Certain Hazardous Substances in Electrical and Electronic Equipment Regulations 2012 (RoHS)	
Electrical Equipment (Safety) Regulations 2016	
EU Directive	Title
2014/30EU	Electromagnetic Compatibility (EMC)
2011/65EU	Restriction of the use of certain hazardous substances in electrical and electronic equipment (EMC)
2014/35	Low Voltage Directive (LVD)

The following harmonised standards and technical specifications have been applied:

EMC
EN50270:2015

SAFETY
EN61010-1:2010

ROSH (UK & EU)
IEC62321-2:2013, IEC62321-1:2013, IEC62321-3-1:2013, IEC62321-5:2013,
IEC62321-4:2013, IEC62321-7-2:2017, IEC62321-7-1:2015, IEC62321-6:2015

Signed for on behalf of:-
01. February 2022

Kane International Ltd.



Paul Morrison
Engineering Manager





Welcome to KANE CARE

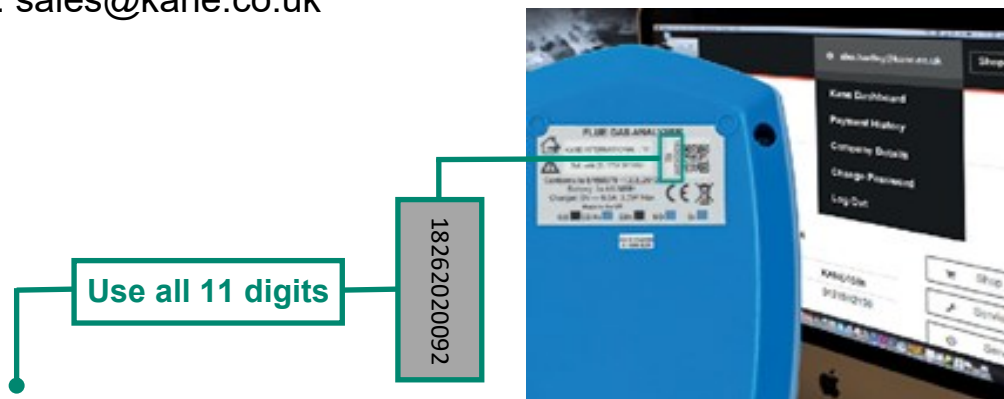
16

KANE CARE is our award winning promise to never let you down or your money back

Analysers & CO monitors must be serviced and recertified every year - In some markets this is a legal requirement

KANE CARE is all inclusive and applies to any KANE analyser or monitor booked online via www.kane.co.uk & www.kanetest.ie - some exclusions apply

KANE CARE is also available for customers outside UK & Ireland - email: sales@kane.co.uk



- ★ Please **register** your analyser on our website to download your instruction manual
- ★ **PLEASE READ ALL SAFETY WARNINGS IN THE MANUAL**
- ★ Use our website to manage your analyser or monitor, buy spares & other KANE products
- ★ Find FAQs on our website or YouTube Channel
- ★ Any question? Call 0800 059 0800 7am - 5pm any normal weekday

More info at: www.kane.co.uk/service-and-re-calibration

www.kane.co.uk www.kanetest.ie
www.kane.eu www.kane-care.com





KANE CARE UK & Ireland Service & Recertification

KANE CARE is our promise to never let you down or your money back

- ★ 10 Year warranty with annual Service & Recertification
- ★ Same Day Service & Recertification guaranteed
- ★ Free next day tracked delivery to KANE
- ★ Free pre 9am next day return & Saturday am
- ★ Theft protection - 50% off when replacing your stolen KANE analyser

KANE CARE applies to any KANE FGA Service & Recertification booked online via www.kane.co.uk & www.kanetest.ie - some exclusions apply

More info at: www.kane.co.uk/service-and-re-certification

KANE CARE International Service & Recertification

KANE CARE is our promise to never let you down or your money back

- ★ 10 Year warranty with annual Service & Recertification
- ★ 20 Year all inclusive pricing
- ★ Includes accessory repair or replacement as required including probe, charger, carry bag & printer
- ★ Free tracked return
- ★ Full test certification & repair report

KANE CARE International applies to any KANE Analyser Service & Recertification booked & quote confirmed via sales@kane.co.uk - some exclusions apply

More info at: www.kane.co.uk/service-and-re-certification

Customer Service

0800 059 0800

+44 1707 375550

Email: sales@kane.co.uk

www.kane.co.uk www.kanetest.ie
www.kane.eu www.kane-care.com

Follow us on...



KANE and the Kane logo (registered in the UK and elsewhere) are trademarks of Kane Group Limited, used under licence

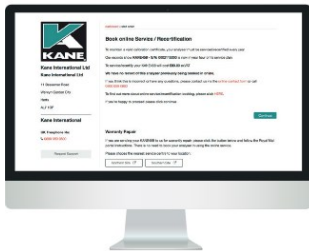
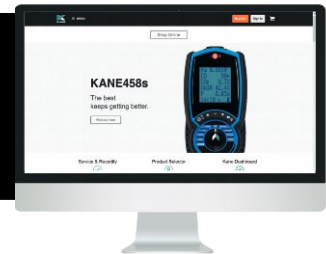
All other marks are trademarks of their respective holders. © 2022 Kane International Limited



UK & Ireland
Same Day Despatch
KANE CARE Service & Recertification



Register your analyser on
www.kane.co.uk or
www.kanetest.ie



Book & pay to Service & Recertify
via your dashboard

Select FREEPOST for tracked
carriage - UK & Ireland mainland only



Your analyser will be despatched
the same day we receive it...
OR YOUR MONEY BACK*

*Excludes KANE-EGA, AUTO600, '9 series' analyser & UKAS certificates - Ireland 2 day turnaround

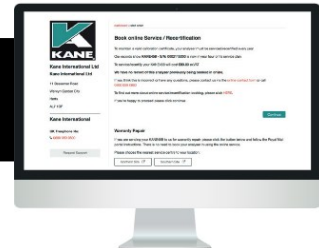


International
All Inclusive Price
KANE CARE Service & Recertification



email: sales@kane.co.uk with
analyser name & serial number

Pay our all inclusive
KANE CARE quote



Send your analyser & accessories

We will return free of charge* after
KANE CARE Service & Recertification
with 1 year warranty if under 10 years old



*Excludes local tax & duty



Welcome to KANE & UKAS



17 KANE & UKAS CERTIFICATION - ISO 17025:2017

- ★ UKAS accreditation is the highest approval standard a test & measurement supplier can achieve - It confirms their certification laboratory operates to the highest standard of competence & impartiality
- ★ UKAS is the only recognized UK authority assessing laboratory standards & capability
- ★ KANE is the only Flue Gas Analyser manufacturer accredited by UKAS to ISO 17025:2017 for gas certification
- ★ UKAS calibration certificates from KANE are legal documents you can submit in evidence to a UK court - they prove your analyser was certified to highest possible standard
- ★ Order fixed price UKAS certification any time - allow 3 days turnaround when returning your analyser for KANE CARE Service & Recertification

Any question? Call 0800 059 0800 7am - 5pm any normal weekday



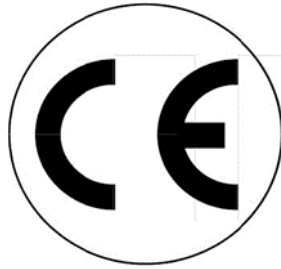
More info at: www.kane.co.uk/service-and-re-calibration

www.kane.co.uk www.kanetest.ie
www.kane.eu www.kane-care.com



18 RECYCLING

THIS PRODUCT CONFORMS TO



PLEASE RECYCLE - CONTACT US

PACKAGING MADE IN THE UK

Thank you for buying this product.

Before use, please register on our website



www.kane.co.uk

Scan QR code to directly register your product online.

Kane International Ltd
Kane House, 11 Bessemer Road
Welwyn Garden City
Hertfordshire
AL7 1GF, UK
email: sales@kane.co.uk
telephone: 0800 059 0800