

ThermoBluetooth

TM Electronics UK Ltd

INSTRUCTION BOOKLET



## PC Set up

### Installing the Software – *What you need*

- TME Software CD
- Bluetooth dongle  
(we recommend the Belkin dongle with Widcom stack)

OR

- Bluetooth enabled PC or laptop

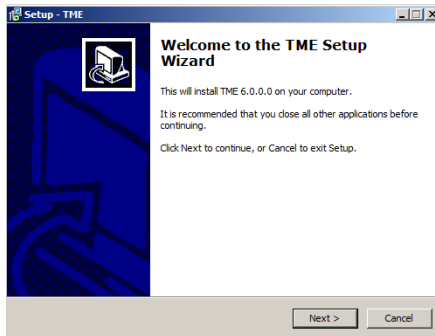
### How to install your TME software

! If you need to install a Bluetooth dongle, please install this ***before*** installing the software CD.

Place the CD into the CD drive of your PC or laptop.

The CD should 'Autorun' and install. If not, please select '**setup**' and follow these instructions-

Click '**next**' to install the software



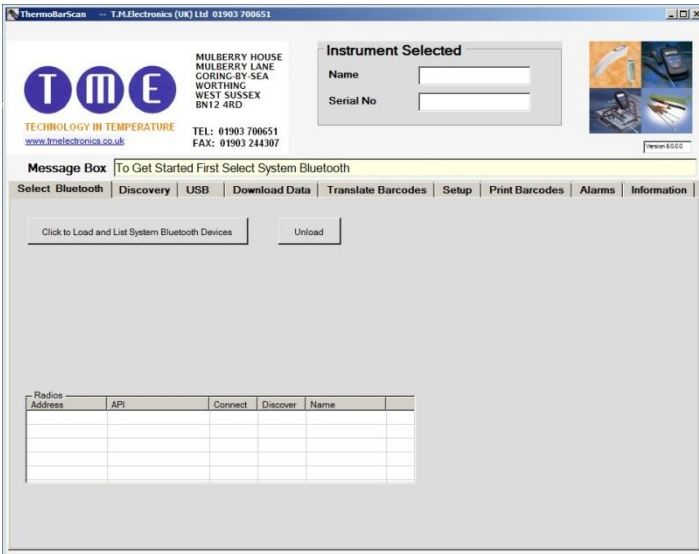
You will then be asked to install the software to C drive directory under '**C:\Program Files\TME**' - click '**next**' to accept this.

The TME software will automatically create a shortcut icon on your desktop so the software can be easily accessed.

Start the **ThermoBarScan** software by clicking on the desktop icon

# Bluetooth SetUp

Go to the **Select Bluetooth** Tab



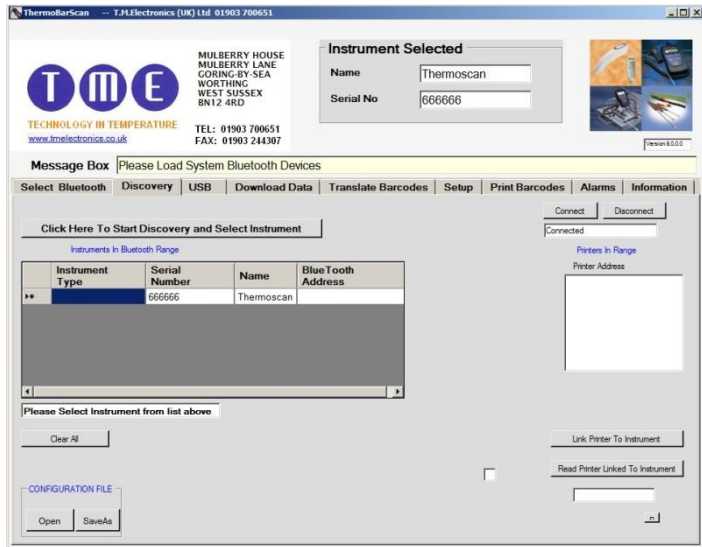
Select **Click To Load And List System Bluetooth Devices**.

You should now see at least one of the driver boxes ticked and any Bluetooth devices will be listed. Highlight the one you wish to use

*! We recommend either Microsoft or Widcom as drivers*

## Discovery

Select the **Discovery** tab and then *Click Here To Start Discovery And Select Instrument*



The devices within Bluetooth range will be displayed and their Bluetooth addresses shown. Click to connect to the instrument you wish to connect to.

Once connected, the software will display the instruments name and serial number. To swap between ThermoBar devices, simply click on another instrument.

## Pairing your instrument to a TME Bluetooth Printer

You are able to print data (print header, time, date, temperature and barcode information) directly from your instrument to a TME Bluetooth Printer. To do this, you must firstly pair the two devices-

**Discover** the instrument and printer you wish to pair in the software.

When discovered, highlight the address of the instrument and printer and press **Link Printer to Instrument**. This will pair the two devices together. To check that the devices are paired, click the **Read Printer Linked to Instrument**. The printer address will appear in the field below to indicate that the devices are paired.

The devices are now ready for use.

Note: you can create a print header in the **Setup** tab.

### Printing from your paired instrument and printer

You have the option of printing either the last reading or all data from the instrument.

To print single data, firstly ensure that you printer is on and instrument is in Bluetooth mode.

Press the **Print** button on the instrument. You will find that the display will show the letter **S** release the button

The printer will print out your latest scan data

To print all data, press and **hold** the **Print** button. You will find that the display will change from the letter **S** (single) to the letter **A** (all)

The printer will print out all your data.

## USB SETUP

For ThermoBar instruments with USB connection only.

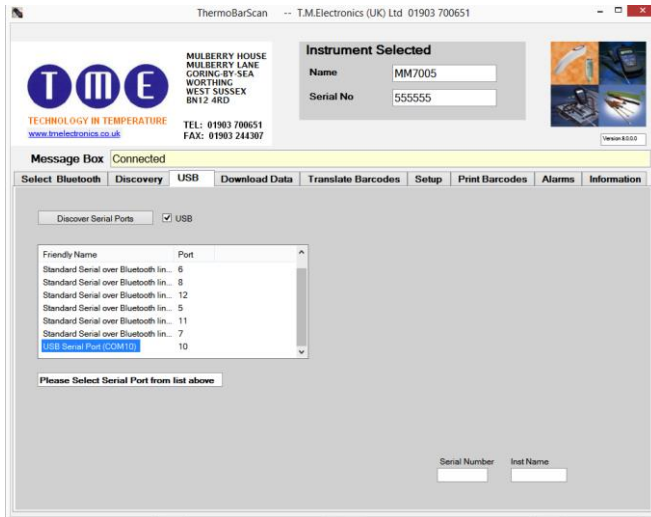
Click on the **USB** tab.

Turn instrument on and connect to computer with the cable provided.

Press the Bluetooth button. 'USB' will appear on display.

Click on the **Discover Serial Ports** Button.

Select the appropriated 'USB Serial Port' and the instrument will automatically connect. The Name and Serial Number will be displayed.



## Setting instrument parameters

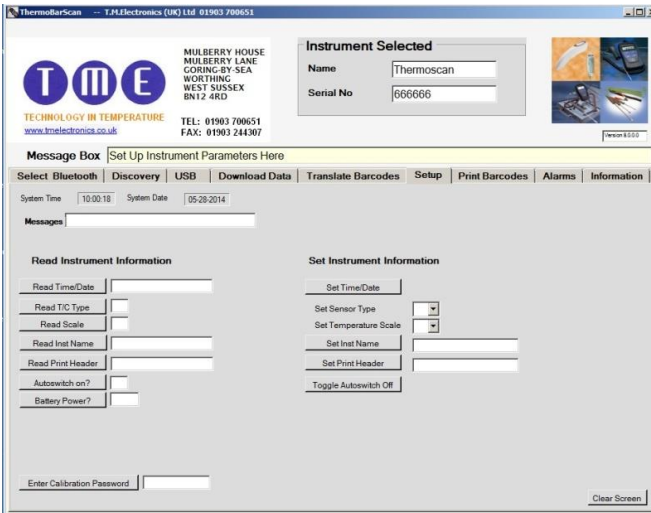
Using the TME software, under **Setup** tab, you are able to set the instrument's parameters. These are:

1. **Set Time and Date** – the time and date is read from your PC. To set the time and date, select **Read Time/Date** and then **Set Time/Date to System**
2. **Set Sensor Type** – sets the thermocouple type e.g. K/T
3. **Set Temperature Scale** – sets the temperature scale e.g. °C / °F
4. **Set Instrument Name** – allows you to identify the instrument with its own specified name
5. **Set Print Header** – allows you to assign a heading for the print reports when using the Bluetooth Printer

Other features include:

**Autoswitch on?** – allows you to check to see if the autoswitch on/off function has been enabled

**Battery power?** – allows you to monitor battery life



The screenshot shows the Thermoscan software interface. At the top left is the TME logo and contact information for TME Electronics (UK) Ltd. The main window is titled "Instrument Selected" and shows the instrument name "Thermoscan" and serial number "666666". Below this is a "Message Box" with a link to "Set Up Instrument Parameters Here". The "Setup" tab is selected, and the interface is divided into two columns: "Read Instrument Information" and "Set Instrument Information". The "Read" column includes buttons for "Read Time/Date", "Read TIC Type", "Read Scale", "Read Inst Name", "Read Print Header", "Autoswitch on?", and "Battery Power?". The "Set" column includes buttons for "Set Time/Date", "Set Sensor Type", "Set Temperature Scale", "Set Inst Name", "Set Print Header", and "Toggle Autoswitch Off". At the bottom left is an "Enter Calibration Password" field, and at the bottom right is a "Clear Screen" button.

Once you have set your parameters, you can check that the settings have been stored by using the **Read** functions. The instrument is now ready for use.

## To take a reading

Connect a thermocouple sensor to the top of the instrument and wait for the temperature reading to stabilize. Once the reading has stabilized, press the **LOG** button.

This will freeze the temperature measurement and record the data

Temperature, Date and Time will be logged to the internal memory. Up to 250 readings can be stored on the instrument.

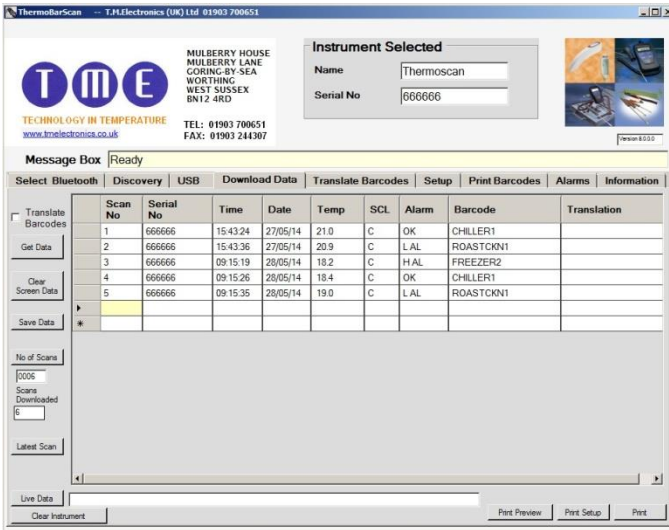


## To Retrieve the information

Use the software to discover and connect as before.

When connected select the **Download Data** tab and then select the **Get Data** button.

The data stored on the instrument will then appear as a numbered list.



The screenshot shows the ThermoScan software interface. At the top left is the TME logo and company information: MULBERRY HOUSE, MULBERRY LANE, GORING-BY-SEA, WORTHING, WEST SUSSEX, BN12 4RD. Contact details include TEL: 01903 700651 and FAX: 01903 244307. The 'Instrument Selected' section shows Name: Thermoscan and Serial No: 666666. The 'Message Box' is set to 'Ready'. The 'Download Data' tab is active, displaying a table of scan results.

Scan No	Serial No	Time	Date	Temp	SCL	Alarm	Barcode	Translation
1	666666	15:43:24	27/05/14	21.0	C	OK	CHILLER1	
2	666666	15:43:36	27/05/14	20.9	C	LAL	ROASTCKN1	
3	666666	09:15:19	28/05/14	18.2	C	HAL	FREEZER2	
4	666666	09:15:26	28/05/14	18.4	C	OK	CHILLER1	
5	666666	09:15:35	28/05/14	19.0	C	LAL	ROASTCKN1	

## Other functions within the **Download Data** tab

1. **Clear Screen Data** – clears downloaded data from software
2. **Latest scan** – displays the latest scan
3. **Live data** – displays the instruments data in real time (scan no, serial number, time, date temperature, temperature scale, alarms, barcode)
4. **Clear instrument** – clears all data stored within the instruments memory
5. **Print preview** – allows you to preview your data before printing
6. **Print setup** – allows you to set up your print
7. **Print** – print data directly from software
8. **Save Data** – saves your data as a 'CSV' file

## Saving your data

To save your data, select the **Download Data** tab and download your data as before.

Select **Save File** button.

In the box that appears, select where you wish to save the data, type in a file name and click save.

Your data will be saved as a CSV (comma separated value) file which can be readily imported to spreadsheets.