

User manual
JOFRACAL
for Jofra Temperature Calibrators



User Manual
JOFRACAL
for JOFRA Temperature Calibrators

© Copyright 2012 AMETEK Denmark A/S

LIST OF CONTENTS

Page

1. INTRODUCTION	12
1.1 General information.....	13
1.2 Hardware requirements.....	13
1.2.1 JOFRA calibrators & models:.....	14
1.2.2 PCs, minimum hardware requirements:.....	15
1.2.3 PCs, minimum software requirements:.....	15
1.3 Installing JOFRACAL.....	15
1.3.1 DotNet Framework.....	16
1.3.2 RTC/PTC USB driver.....	16
1.4 Reinstalling JOFRACAL.....	16
1.5 Converting the AmeCal–Temperature Database.....	16
1.6 Connecting JOFRACAL to a JOFRA device.....	17
1.6.1 RS232 communication.....	17
1.6.2 USB (Universal serial bus) communication.....	17
1.7 Starting the JOFRACAL program.....	18
1.7.1 Windows XP(32bit)/Vista(32bit)/7(32&64bit)/ 8/10 [®]	18
1.7.2 Starting JOFRACAL.....	18
1.8 Backup copies.....	20
1.9 Uninstalling JOFRACAL.....	20
1.10 Program structure for JOFRACAL.....	20
1.11 Database management.....	21
1.11.1 To create a new database.....	23
1.11.2 To select a database.....	23
2. HOW TO SELECT A USER	24
2.1 Super users.....	24
2.2 Normal users.....	25
2.3 Select a user.....	25

2.4	Program default user names	25
2.5	Main menu.....	25
3.	DEVICE MAINTENANCE	28
3.1	View a test device.....	28
3.1.1	Device summary details.....	29
3.1.2	Calibration certificates & history	29
3.1.3	Viewing a certificate	30
3.1.4	Delete certificate	33
3.2	View History	34
3.3	Edit a test device	36
3.3.1	Test device properties.....	37
3.3.2	Defining a device type.....	37
4.	CALIBRATION SETUP	38
4.1	Select a test device for calibration	38
4.2	Defining the calibration test setup scenario	40
4.2.1	Creating a new Test setup	42
4.2.2	Test Setup parameters	43
4.3	Defining the calibration procedure	45
4.3.1	Selecting an existing Procedure.....	46
4.3.2	Creating a new Procedure.	46
4.3.3	Deleting a procedure.....	47
4.3.4	Copy a procedure	47
4.3.5	Test Setup parameters	48
	Temperature steps	48
	Source	49
	Slope (gradient)	49
4.3.6	Stability criteria	49
	Maintain last temperature	50

5.	DEFINING SOURCES.....	51
5.1	Select a source.....	52
5.2	Create a new source from connected device	52
5.2.1	TCPIP Ethernet communication	53
5.3	Copy a source record	53
5.4	Delete a source record	54
5.5	Source general data	54
	Manufacturer	54
	Serial number	54
	Calibrator model	54
	Calibration dates	54
	Description	54
	Minimum/maximum temperature	54
	Resolution	55
	Load compensation	55
	Calibration notes	55
	Certificate note	55
5.6	Source function properties.....	55
6.	TRUE READING METHOD.....	57
6.1	Predefined standard methods.....	58
6.2	User-defined methods	58
6.3	Selecting a True reading method.....	58
6.4	Creating a user-defined method	59
6.5	Copy a User-defined method.....	60
6.6	Deleting a True reading method	60
6.7	True read parameters.....	61
6.7.1	General parameters.....	61
	Resolution:	61
	Set follows true:.....	61
6.7.2	Logging device parameters.....	62

	Manufacturer	62
	Serial number	62
	Logging type	62
	Calibration dates	63
	Reference channel no.....	63
	Resolution	63
	Notes	63
	Certificate note	64
6.8	Quick connect to logging device:	64
7.	REFERENCE SENSORS	65
7.1	Selecting a Reference sensor.....	66
7.2	New reference sensor from device	66
7.2.1	TCPIP Ethernet communication	67
7.3	Copy reference sensor	68
7.4	Delete reference sensor	68
7.5	Reference sensor properties	68
	Manufacturer	68
	Serial number	69
	Reference sensor type	69
	Calibration dates	69
	Minimum/maximum temperature	69
	Notes	69
	Certificate note	70
7.6	Sensor parameters / coefficients	70
	Connection status panel.....	71
7.7	Up/Downloading reference sensor coefficients.....	71
7.7.1	Connecting	72
7.7.2	Disconnecting	73
7.7.3	Downloading	73
7.7.4	Uploading	74

7.7.5	Default values	74
7.7.6	Calculate coefficients	75
7.7.7	Tables.....	76
7.7.8	ITS 90.....	77
7.7.9	Callendar van Dusen	77
8.	D.U.T READING METHOD	79
8.1	Predefined standard methods.....	80
8.2	User-defined methods	80
8.3	Selecting a D.U.T reading method.....	80
8.4	Creating a user-defined method	80
8.5	Copy a User-defined method.....	82
8.6	Deleting a D.U.T reading method	82
8.7	D.U.T read parameters	83
8.7.1	General parameters.....	83
	Resolution:	83
	Convert to temperature:.....	83
	Cold junction compensation.....	83
8.7.2	ASM-80x as Logging device parameters.....	84
8.7.3	Logging device parameters.....	84
	Manufacturer	84
	Serial number	84
	Logging type.....	85
	Calibration dates.....	85
	Channel - Device setup	86
	Resolution:	86
	Notes.....	86
	Certificate note	86
8.8	Synchronizing logging devices.....	86
9.	UPLOAD/DOWNLOAD	89
9.1	Work orders.....	90
9.1.1	Creating a work order	90

9.1.2	The work order list	90
9.1.3	Connecting to the Temperature calibrator	91
9.1.4	Current work orders in calibrator	92
	ATC series.....	92
	RTC/PTC series	92
9.1.5	Up / downloading work orders.....	93
9.1.6	Disconnecting the calibrator Up/Download.....	94
9.2	Reference sensor.....	95
10.	SCHEDULER	96
10.1	Selecting devices.....	97
10.2	Scheduling for calibration	97
10.3	Remove from schedule list	97
10.4	Scheduled devices report	98
11.	HOW TO EDIT A TEST DEVICE	99
11.1	Test device properties	99
	Manufacturer	100
	Serial number	100
	Sensor type, subtype and output properties.....	100
	Last calibration date	100
	Last certificate number	100
	Calibration interval.....	101
	Scheduled	101
	Pass/Fail criterion.....	101
	Notes 102	
	Certificate note	102
	Sensor location tags	102
	Minimum/maximum temperature	102
11.2	Defining a test device calibration setup.....	102
11.3	Defining a test device Procedure.....	103
11.4	Defining a device type	103

Category.....	103
11.4.1 Temperature device definitions	104
Temperature Types	104
Temperature device subtypes.....	104
Output unit.....	106
Input wires	107
Temperature Scale	107
12. USING THE DEVICE SEARCH DIALOG	108
12.1 Selected / deselecting	109
12.2 Sorting devices.....	109
12.2.1 Sorting by location	109
12.2.2 Sorting by device type.....	111
12.2.3 Sorting by manufacturer.....	111
12.3 Selection filters:	112
12.3.1 Filter with device type and output unit	112
12.3.2 Filter with dates.....	112
12.3.3 Filter using the device scheduled property	113
12.3.4 Due for calibration indicator.	113
13. ONLINE CALIBRATION	114
13.1 Preheating calibrators during temperature calibration	114
13.2 Single device calibration	116
13.3 Multi device calibration	116
13.3.1 Viewing previous steps in multi-device calibration.	117
13.4 Multiple calibration with scanners	117
13.5 Online control buttons.....	118
13.6 Calibration completion	119
13.7 Saving the calibration certificate	119
13.7.1 Certificate name.....	120
13.7.2 Certificate copy alternatives	120
13.7.3 AsFound AsLeft	121

13.8	Online Information	121
13.9	Online graph information	122
13.10	Reading of data from devices	122
13.11	Temperature steps	123
13.12	Storage temperature.....	124
14.	SYSTEM CONFIGURATION.....	125
14.1	Company information	125
14.1.1	Company name	126
14.1.2	Working instructions.....	126
14.1.3	Company Logo	126
14.2	Certificate	127
14.2.1	Certificate numbering.....	128
14.2.2	Automatic numbering of certificates	128
14.2.3	Next certificate - lead text.....	129
14.2.4	Next certificate - number.....	129
14.2.5	Certificate translation	129
14.2.6	Translate certificate texts	129
14.2.7	Translation table	129
14.2.8	Certificate output defaults.	130
14.3	Default measure units.....	130
14.3.1	Default temperature measuring unit	131
14.3.2	Default pressure engineering unit	131
14.3.3	Storage temperature	132
14.3.4	Mains frequency	132
14.4	Miscellaneous.....	132
14.4.1	User defined sensor location labels	133
14.4.2	DTI resolution message	134
14.4.3	IP address for TCP/IP Ethernet communication ...	135
14.4.4	Calibration Uncertainty information	135
14.4.5	Language selection.....	136

- 14.5 User registration 136
- 14.6 Database Conversion program..... 136
 - 14.6.1 Selecting the Amecal-Temperature database 137
 - 14.6.2 Selecting the JOFRACAL database 138
 - 14.6.3 Running the conversion 139
 - 14.6.4 Conversion log panel 140
 - 14.6.5 Close and save the conversion details 141
- 14.7 Export certificate database 142

1. INTRODUCTION

This manual contains installation and operating instructions for:

JOFRA WINDOWS' CALIBRATION PROGRAM

JOFRACAL

The program was developed by:

AMETEK Denmark A/S

Gydevang 32-34
DK-3450 Allerød
Denmark

Tel.: +45 48 16 80 00

Fax: +45 48 16 80 80

1.1 General information

The JOFRACAL program is designed to perform temperature, pressure and signal tests to calibrate sensors using JOFRA equipment via with RS-232 and USB communication ports.

The software is supplied on a media device with update downloads available from the AMETEK home page.

Knowledge of the JOFRA equipment and system to be tested is essential in order to obtain the maximum benefit from this program. Knowledge of Windows[®] programs in general is an advantage.

- **Warranty**
Use of the product remains the full responsibility of the user, and AMETEK Denmark A/S offers no warranty and is under no obligation in relation to this product. In addition, AMETEK Denmark A/S cannot be held responsible for any damage, which may occur in connection with the use of this product, including loss of earnings, loss of profit, loss of data or recovery of lost data, loss of goodwill and other similar incidental or consequential damage or loss.
- **Technical assistance**
Please contact the distributor, if you require technical assistance.

1.2 Hardware requirements

JOFRACAL can communicate with the following JOFRA equipment and has the following requirements from the PC:

1.2.1 JOFRA calibrators & models:

JOFRA calibrators:

- SE-Series
- SE-Series with external tower
- CTC- Series
- MTC-Series
- ATC-Series
- ITC-Series
- ETC-Series
- RTC-Series
- PTC-Series
- New CTC- Series (155,350,660 & 1205)

JOFRA model:

- DTI (1000 & 100)
- DTI050
- ASC series
- ASM-80x A, ASM-80x B

1.2.2 PCs, minimum hardware requirements:

- Intel® Pentium® II 1.4 GHz processor.
- 128MB RAM (256MB recommended)
- 512MB free disk space on hard disk (1GB recommended) prior to installation
- Standard VGA (800x600, 256 colours). 1024x768 recommended.
- USB port required for software installation.
- One or more free RS-232 serial and USB ports, if using devices requiring communication.
- Ethernet communication is also possible with the RTC/PTC series.

1.2.3 PCs, minimum software requirements:

- Microsoft Windows® XP(32bit), Vista(32bit), 7(32&64bit)/8/10.
- System fonts: MS Sans Serif and Arial

1.3 Installing JOFRACAL

The JOFRACAL program is supplied on a USB stick and comes complete with its own installation program.

Future upgrades available for download on www.jofra.com.



Simply insert the data medium and execute the Autorun.exe then follow the instructions on screen.

By default, JOFRACAL is installed in the directory: *Default program folde*\JOFRACAL

and an icon automatically appears on the Program's menu.

If you want to install the program manually, the USB also contains a SETUP.EXE file in the Jofracal folder.

1.3.1 DotNet Framework.

The JOFRACAL software requires Microsoft .NET FRAMEWORK SP1 which is installed if not already found on the PC.

1.3.2 RTC/PTC USB driver

The RTC/PTC, new CTC series and the ASC400 calibrators required a driver to communicate with JOFRACAL. This driver is installed automatically during the installation of JOFRACAL.

☞ Note: when installing on Microsoft Windows®, you must have Administrator's privileges. If not please contact your local System Administrator.

1.4 Reinstalling JOFRACAL

The installation program detects whether JOFRACAL is already installed on the PC. If already installed you will have the option to repair the current installation or remove it.

Repairing the installation will overwrite the installation program files.

Uninstalling (remove option) JOFRACAL will only delete the program files.

Databases are not deleted nor are they overwritten if reinstalled to the same location. If a complete reinstallation is required including databases, the old installation folder must be deleted manually or reinstalled to another location.

1.5 Converting the AmeCal–Temperature Database

It is possible to use data from the existing AmeCal–Temperature database with the new JOFRACAL software.

Before an AmeCal–Temperature database can be used with JOFRACAL it must be converted.

(See Database conversion program)

Most data from the AmeCal database is converted including:

- Test devices, their relevant history and certificate information
- Source information
- Procedures
- System configuration.

1.6 Connecting JOFRACAL to a JOFRA device

1.6.1 RS232 communication

JOFRACAL can be connected to a JOFRA (ATC, CTC, ITC, MTC, ETC,SE) calibrator and/or JOFRA DTI / DTI050/ ASCxxx/ ASM-80x using a serial connection (RS232) port. The JOFRA device must therefore be equipped with a serial communication port. The device should be connected to a free serial port on the PC - please refer to the PC manual for further information regarding the location and appearance of serial ports. Use the serial cable supplied with the device.

1.6.2 USB (Universal serial bus) communication

JOFRACAL can be connected to any JOFRA RTC/PTC, new CTC and ASC400 calibrators via a USB port. The very first time a specific RTC/PTC and ASC400 is connected to a PC, Windows will require the USB driver to be installed. This process is the same as any other Plug and play device.

☞ Note: JOFRA RTC/PTC calibrators have the possibility to communicate using the TCPIP protocol.

STOP IMPORTANT! STOP

- The JOFRA device must be switched off when connecting the cable from the PC.
- The JOFRA device and the PC must be earthed to avoid noise interference and damage to the equipment.
- You are advised not to switch the calibrator on until JOFRACAL has been started.

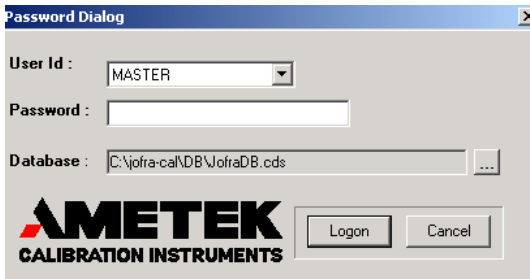
1.7 Starting the JOFRACAL program

1.7.1 Windows XP(32bit)/Vista(32bit)/7(32&64bit)/ 8/10[®]

- Click *Start*.
- Select *Programs*.
- Select *JOFRACAL*.
- Select *JOFRACAL Calibration software*.

1.7.2 Starting JOFRACAL

On start up, JOFRACAL begins by displaying the login dialog in which the operator must select a user and key in the password.



User and access levels, these are described in section 2 page 24.

As no user-defined names have been added at this stage, you are required to use one of the default names. These are:

MASTER or USER
(No passwords are required)

JOFRACAL also remembers the location of the database last used and the complete path is displayed in the database field.

The first time you log in JOFRACAL a default database is located in the JOFRACAL subdirectory \DB.

Databases can be created, selected and deleted. This is described in section 1.11 page 21.

Note: The logon dialog can also be called from the menu in JOFRACAL allowing the user to change both database and user without closing the program.

1.8 Backup copies

STOP ALWAYS MAKE BACKUP COPIES! STOP

Loosing data can waste a great deal of time and resources, and it is important that you take the time required to make a backup copy of your database. The backup copy should include all files in the JOFRACAL\DB folder. Backup copies should be made using a suitable backup program - follow the manufacturer's instructions.

1.9 Uninstalling JOFRACAL

JOFRACAL is removed from the PC as follows:

- Open Control Panel
- Open Add/Remove Programs
- Select JOFRACAL
- Press Add/Remove button and follow instructions on screens

JOFRACAL default database (CDS files in the \DB folder) will not be deleted during the uninstall process. The database can therefore be used for subsequent installations of JOFRACAL or other programs.

1.10 Program structure for JOFRACAL

Like other Windows[®] programs, JOFRACAL uses buttons, dialog boxes, grids, tables, etc. JOFRACAL uses paging controls to navigate through the main areas of the program.



The JOFRACAL functions are divided into five main areas:

- Device maintenance (section 3 page 28)
- Calibration setup (section 4 page 38)
- Upload / Download (section 9 page 89)
- Scheduler (section 10 page 96)
- Online Calibrating (section 13 page 114)

Apart from the main program areas, there is the system configuration dialog (section14 page 125) called from the menu.

These functions are described in detail in the specified sections of this manual.

1.11 Database management

Under installation a default database is created. It consists of several CDS (Client Data Set) files and is located in the subdirectory \DB of the JOFRACAL installation folder.

For users who only require a single database, this database is always default start up database.

Program menu – database options



Select another database by clicking on the select button.



When using multiple databases, the correct database must be selected before logging on to JOFRACAL.

1.11.1 To create a new database

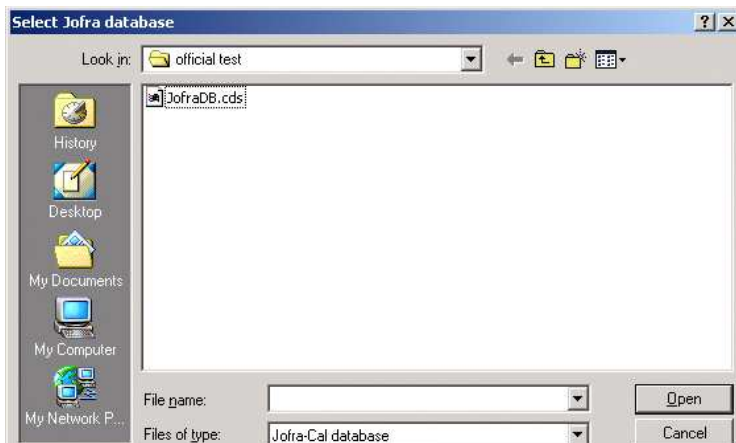
For those wishing to use multiple databases, simply create a new subdirectory and copy the new database files into the new folder. An empty database can be found on the installation USB.

☞ Warning. Make sure the CDS database files are not write protected after copying from the USB. Remove the ReadOnly flag if necessary.

1.11.2 To select a database

Before logging on, select the Program>logon to bring up the logon on page. Use the Select button to show the database selection dialog and find the required JOFRACAL.CDS file.

Program – Select Database



Use this dialog to locate and select the correct database. Click Open to use the selected database and return to the login menu.

2. HOW TO SELECT A USER



You must select a user in order to run JOFRACAL.

Select user:



Users are maintained in the System setup. Users can have either full access (*super users*) or restricted access (*normal users*) to the JOFRACAL system. Please note that users do not require full access to perform a calibration (section 14.4.1 page 133).

Details of the default user names are found in section 2.4 page 25. These provide access to the program before any user names are defined.

2.1 Super users


Super users have access to the complete database and can create, delete and edit sensors, sources, procedures, etc.

2.2 Normal users

Normal users cannot create, edit or delete information, nor can they modify the system setup. They can only perform calibrations using existing information, but may create certificates once the calibration procedure has been completed.

2.3 Select a user

Select a user from the User list box.

Confirm by clicking 

- or -

to exit JOFRACAL, click .

An error message will be displayed if an unknown user or an incorrect password is entered.

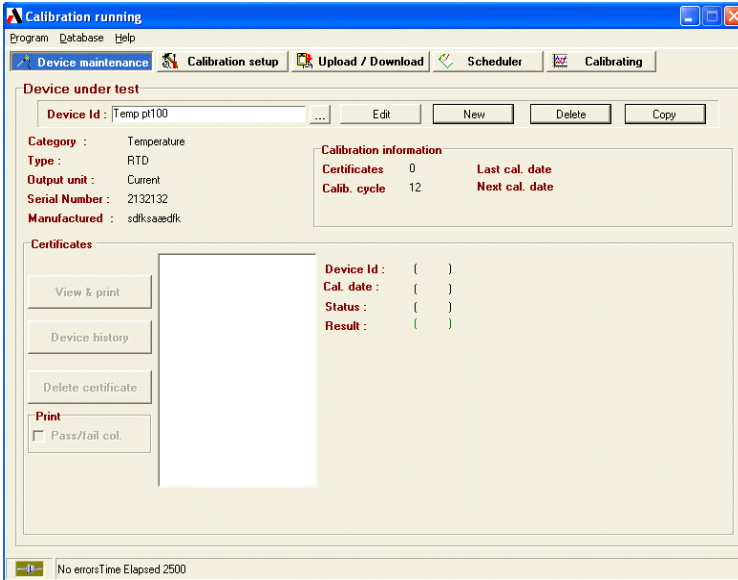
2.4 Program default user names

Two users will be set up the first time you run JOFRACAL. The first user name, *MASTER*, is a super user. The other user name, *USER*, is a normal user. No password has been linked to these two users. Once the 'real' users have been set up, *MASTER* and *USER* can be deleted. Note that user ID can only be deleted by a super user, and that the current user cannot be deleted (Section 14.4.1 page 133).

2.5 Main menu

When JOFRACAL has accepted the selected user, the main menu is shown:

Main menu



JOFRACTAL uses paging controls to navigate through the main areas of the program. The active page is always highlighted in blue. Select a page by clicking on the page tab.

The 5 main areas of JOFRACAL

Device Maintenance: Test device database and calibration history.

Calibration Setup: Select a device, set up and run a calibration.

Upload/Download: Up/download offline calibrations and maintain reference sensor database.

Scheduler: Earmark devices due for calibration.

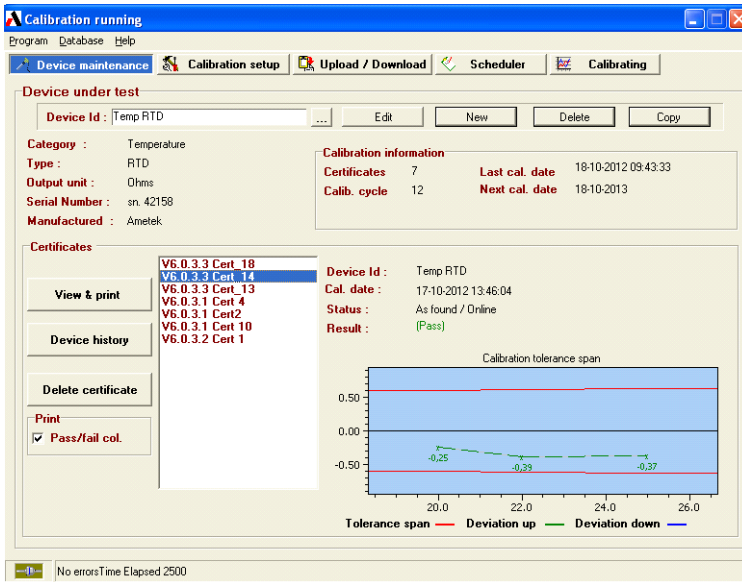
Calibrating: Online calibrating.

Exit: Not visible during online calibration.

☞ Note that the 'Calibrating' page tab replaces the 'Exit' during online calibration.


3. DEVICE MAINTENANCE

Device maintenance dialog:



The device maintenance allows the user to maintain and view the test instrument database. The user can create, copy, delete and edit a test device. (See Section 3.3 Page 36).

3.1 View a test device

To view a device the user must click the  select button to display the Device search dialog. (Section 12 page 108).

3.1.1 Device summary details

When a device is selected the user can find information regarding the device's basic properties, calibration history, and a list of previous calibration certificates.

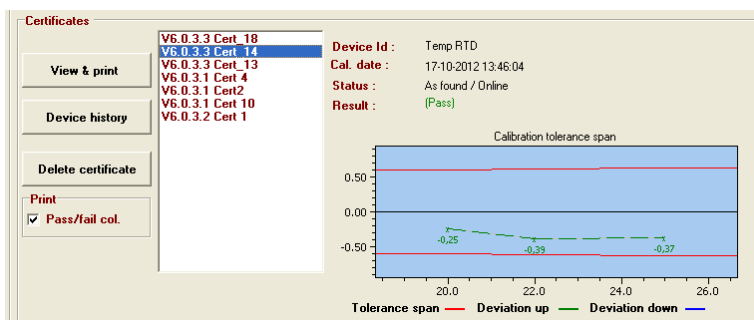
Device summary details – maintenance

Device under test											
Device Id :	PT100 -1 reserve										
Category :	Temperature										
Device type :	Pt100										
Output unit :	Ohms										
Serial Number :	PT100 5115										
Manufactured :	Ametek Denmark A/S										
<table border="1"> <thead> <tr> <th colspan="2">Calibration information</th> </tr> </thead> <tbody> <tr> <td>Certificates</td> <td>25</td> </tr> <tr> <td>Calib cycle</td> <td>12</td> </tr> <tr> <td>Last cal. date</td> <td>30-04-2004 11:26:48</td> </tr> <tr> <td>Next cal. date</td> <td>30-04-2005</td> </tr> </tbody> </table>		Calibration information		Certificates	25	Calib cycle	12	Last cal. date	30-04-2004 11:26:48	Next cal. date	30-04-2005
Calibration information											
Certificates	25										
Calib cycle	12										
Last cal. date	30-04-2004 11:26:48										
Next cal. date	30-04-2005										

3.1.2 Calibration certificates & history

Device calibration history is seen in the lower half to the device maintenance screen including a list of all completed certificates. A brief summary of the highlighted certificate (date, pass/fail, deviation graph) is detailed to the right.

Device calibration certificates - maintenance



3.1.3 Viewing a certificate

All certificates created by JOFRACAL are saved in a certificate database file 'Certfile.CDS' and may be viewed, printed and saved in PDF format as, and when, required.

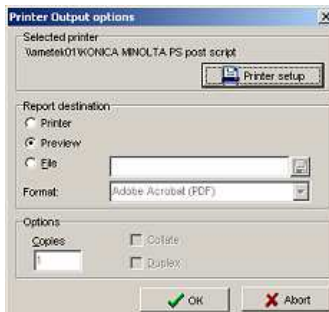
Highlight the Certificate you wish to view from the certificate list, then

View & print

click the button.

The system displays the following window:

Certificate output options - maintenance



The user has 3 output options:

1. Send direct to the printer.
2. Preview the certificate on the screen.
3. Save as a PDF of NDF formats.

If the user chooses to preview the certificate the following screen appears.

A two-page report is displayed.

Certificate preview – page 1:

Kalibreringscertifikat

Certifikata nr.: 2001-06-17-001
 Calibration status: As found / Online
 Calibration result: OK
 StartTid: 14.07.43 SlutTid: 00.23.53
 Maksimal afvigelse: 0,17°C
 Kalibreringsdate: 17. juni 2001

Føler under test

Id	DEWID 1710, 4 WIRE	Serienummer:	501843-09
Fremstiller	Ametek Denmark A/S	Tolerancer	0.50% +0.30°C
Apparattype	P1100	Sidst kalibreret	17. juni 2001
ApparatSubtype			
Output unit	Current	Skalering	4 mA=0°C, 0 mA=100°C

Noter

N/A

Føler u. test read device

Apparattype	DT1000	Serienummer:	DT1000 - 010642-01247
Fremstiller	Ametek Denmark A/S	kanal	1

Noter

Sand read device Reference input on assoca

Varmekilde(Master)

Id	ATC 155-B	Serienummer:	501736-00007
-----------	-----------	---------------------	--------------

Certificate preview – page 2 results:

Calibration Certificate

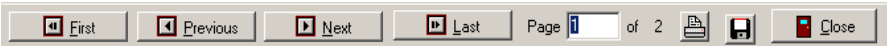
Certificate No: Schema 3 cert_7
 Calibration Status: As Found / Work order
 Calibration result: Pass
 Time start: 10:38:50 Duration: 00:14:12
 Max. Deviation: -0,28°C
 Date of calibration: 17. maj 2004

Calibration results : RTD 3

Stability (True) : Variations less than $\pm 0,50^{\circ}\text{C}$ during 2Min.
Stability (Sensor) : Variations less than $\pm 0,50^{\circ}\text{C}$ during 2Min.

StepNo	Set [°C]	Source	True [°C]	Sensor [°C]	Deviation [°C]	Pass/Fail
1	36	Master	35,65	35,37	-0,28	Pass

The window may be resized by dragging its corners, or it can be maximized to fill the entire screen.



The buttons at the top of the screen provide the following functions:



Save certificate in PDF format.

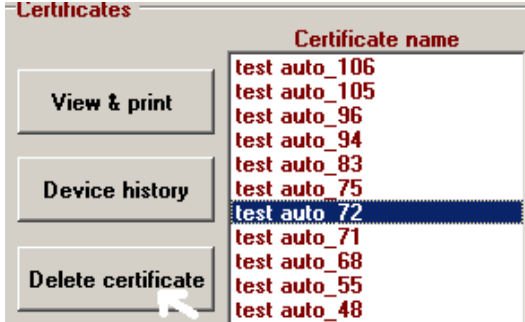


Print certificate currently displayed



Page navigating. First, Previous, Next, last page, select page number.

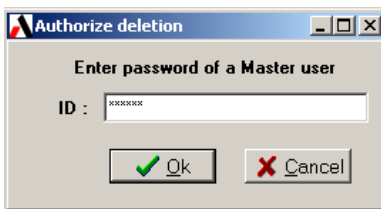
3.1.4 Delete certificate



Delete a certificate by first selecting the certificate from the list you wish to delete then click the **Delete certificate** button.

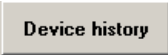
☞ Super users can only delete certificates.

To confirm deletion JOFRACAL will ask for authorization from a registered Master User. Here the user simply types in a valid password for a Master user.



3.2 View History

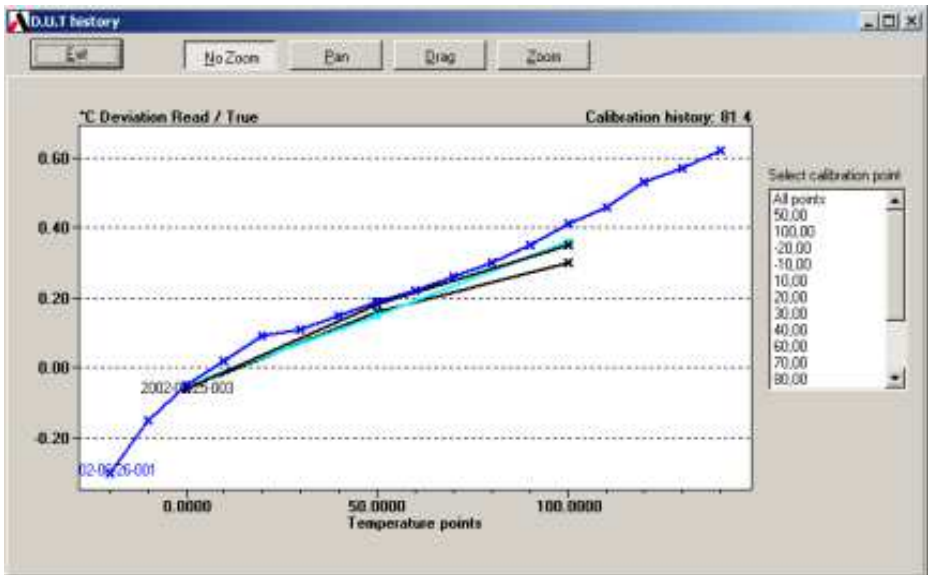
All calibrations to a particular sensor can be viewed on screen as a graph. This indicates changes in the sensor's sensitivity and accuracy between different calibrations. This can be useful to show changes over time or variations between different calibration groups:



Click **Device history** to view the history of the currently selected test device.

A window containing a graph is shown:

History - viewing:



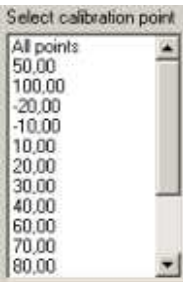
The buttons at the top of the screen provide the following functions:



This returns you to the device maintenance page.



These buttons allow the user to further scrutinize the history graph with zoom, drag and pan functions.

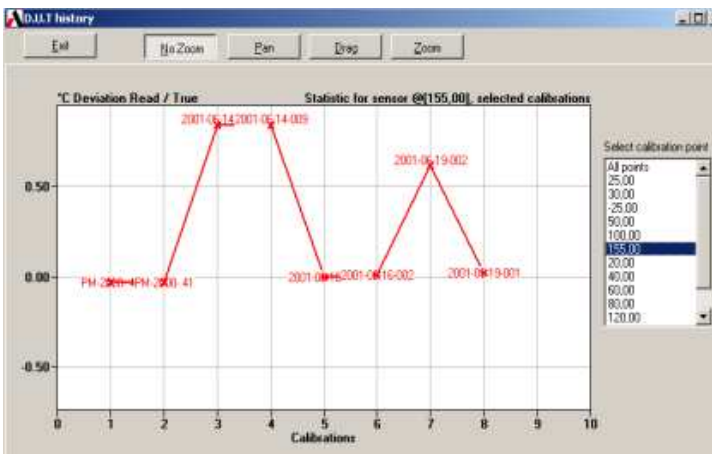


You can define the axis settings and zoom on areas of interest.

This provides a numeric list of all the calibration temperatures on the graph.

Use this list to select a specific calibration temperature and view all the measured values at this temperature for the sensor.

Deviation



3.3 Edit a test device

Device under test data form contains the properties of a test device instrument.

Edit test device properties - Maintenance:

Test device data

Device under test (DUT)

Device ID : Temp pt100
 Manufacturer : sdtksaasdtk
 Serial No : 2132132
 Description :

Range:
 Min : 0,00 °C Max : 100,00 °C

Pass/Fail criteria : ±(0,50 %rdg+ 0,80 °C)

Calibration:
 Last certificate No. :
 Last certificate : N/A
 Calibration interval : 12 months
 Scheduled :
 Test setup : ATC DTI
 Procedure : Temp 30 to 35

Certificate note :
 Max. 30 characters.
 Notes :

Category : Temperature
 Device type : RTD
 Sub type : P100(90)385
 Output type : T/I (4-20mA)

Scaling:
 Low input : 4 = 0 °C
 High input : 20 = 100 °C

Location / Tags:
 Factory =>
 Department =>
 Section =>

Ok Cancel



Changes can only be made by a user with MASTER access.

3.3.1 Test device properties

Contains information identifying the test device.

- Device ID. (Unique value identifying every device in database)
- Maker
- Serial number
- Description
- Temperature ranges. Devices' min & max temperature limits.
- Pass-Fail. Calibration pass/fail criteria.
- Last certificate. Date and name of last calibration certificate.
- Calibration interval. How often device is to be calibrated.
- Schedule. Is the device scheduled for calibration?
- Calibration parameters. Calibration Setup and procedure ID's.
- Notes. Certificate and general notes.
- Location /tags. Identifies the devices' position.

3.3.2 Defining a device type

Definition of a test device comprises of:

- Category
- Type
- Subtypes
- Output

See Section 11.4 Page 103 for full details on Test device definition.

4. CALIBRATION SETUP

Click on the  tab to begin a calibration.

The calibration process is divided into 3 distinct stages and is navigated by “Vertical page tabs” on the right of the form.

- ① Selecting the test device(s).
- ② Create or select a predefined scenario.
- ③ Create or select a procedure method.

If the scenario and procedure have already been defined then the user must only select the device and click on the

 button.

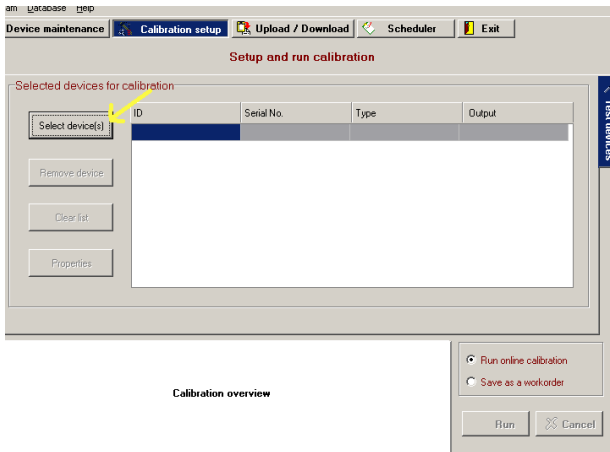
Normally the scenario and procedure are defined when the user creates a test device in the Edit Test device Dialog. (Section 11 Page 99).

4.1 Select a test device for calibration

First step is to select the devices to be calibrated.

Click on the ‘Select devices’ button highlighted by the yellow arrow in the below picture.

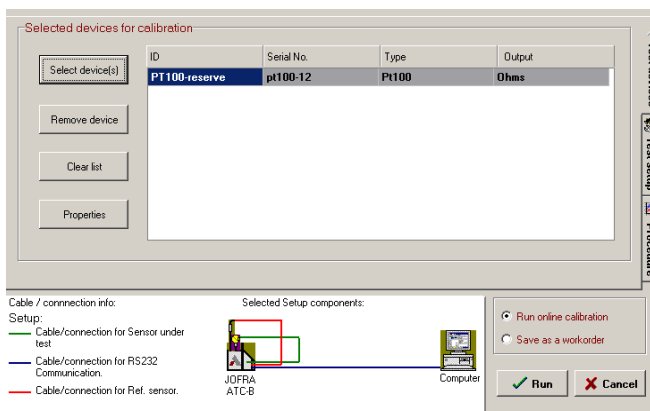
Initial screen – calibration setup



The JOFRACAL Search dialog is displayed. See (Section 12 Page 108) for details on the search dialog.

After selecting a device JOFRACAL returns to the setup pages.

Calibration setup after selecting a device





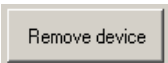
Note the 2 extra vertical tabs now displayed, Test setup (scenario) and procedures.

In this case the device in question has been assigned a setup routine, seen by the graphic scenario summary below the device list.

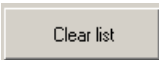
There are 4 control buttons on the device selection page.



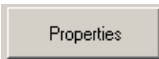
Select device(s) for calibration.



Remove the device currently highlighted from list.



Remove all selected devices from list.



View the properties of the device currently highlighted. See (Section 11 Page 99) for details on the test device dialog.

4.2 Defining the calibration test setup scenario

The second stage of setting up a calibration is defining the test environment.

A "test setup" method can be defined and saved, then later assigned to any other test device in the database.

The **Test setup** can actually be first assigned in the **Edit Test device Dialog** when first creating the Test device See (Section 11.2 Page 102) or later here in the Calibration setup.

Test setup page – Calibration setup

Setup and run calibration

Setup ID : RTC Dti InputOnSource New Delete Copy

	Identification	Type	Serial no	Edit	Serial ports
Source 1	Other RTC 156B	RTC-156 B	574364-00001		COM7 RTC-156 B 57
Source 2	Not in use			...	
True read	Reference input on master			...	
Ref sensor	541118-00		541118-00	...	
D.U.T. Read	RTD input on master			...	

Test devices
Test setup
Procedure

☞ Required serial communication ports are defined to the right of each component. If an ASM-80x is used as a relay together with a DTI, ASC, RTC/PTC or ATC input then an extra comport control appears at the bottom for the ASM-80x

☞ Note: The allocated communication port for an RTC/PTC is first visible when the device is connected and running.

541118-00	...	COM5 \Device\Edge
9416010	...	COM6 \Device\Edge

Input via ASM serial port

onents:

Procedure

The following buttons allow the user to maintain the Test setup definitions database.

Select a predefined Test setup definition.

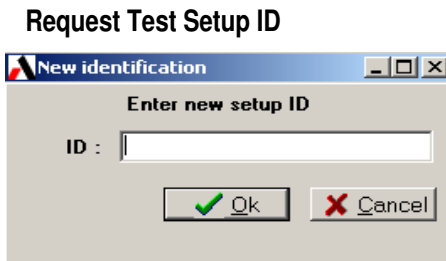
Create a new Test setup definition.

Delete the current “Test setup” definition. Be sure no other device uses this record.

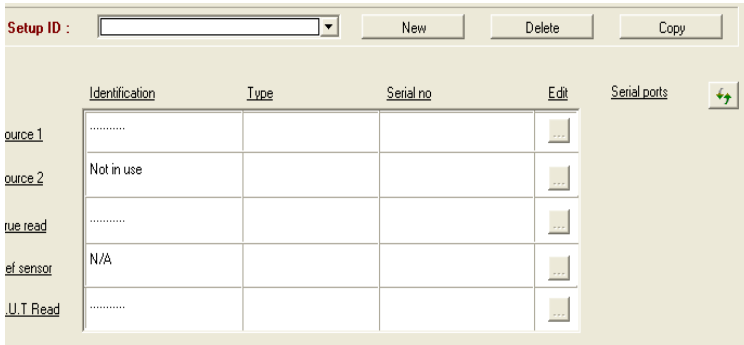
Copy the current “Test setup”.

4.2.1 Creating a new Test setup

When copying or creating a new scenario the user is requested to enter a new Test Setup ID.



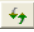
Key in the new ID and click OK. A blank Test Setup page is presented ready for a complete new definition.




4.2.2 Test Setup parameters


The following calibration variables are defined in this page:

Refresh connected device list :

Devices using USB connection appear in the list only if they are connected and powered on. If an RTC/PTC is first connected when defining a scenario you will need to refresh the list by selecting the  button

Source 1: To select Source 1, click on the select  button adjacent Source 1 label.

(For details on the source dialog see Section 5 Page 51)


Source 2: To select a Source 2 click on the select  button adjacent Source 2 label.

True reading method: Defines how the True reference measurement reading will be done.

Click on the select  button adjacent True read label.


For details on the True read method dialog see (Section 6 Page 57).

Reference Sensor: If the True read method is anything other than 'internal' then this parameter must be defined.

Click on the select  button adjacent Ref Sensor label.

For details on the Reference sensor dialog see (Section 7 Page 65).

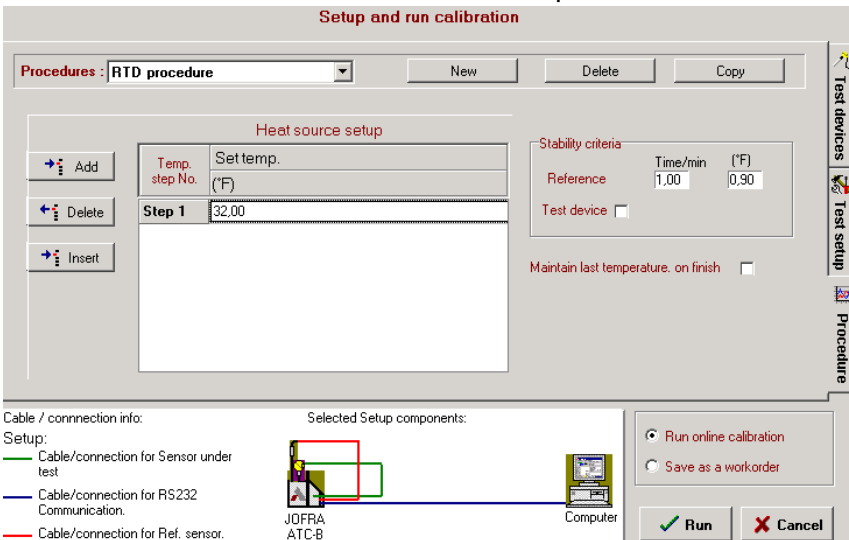
D.U.T reading method – Defines how the Test device measurement reading will be done.

Click on the select  button adjacent D.U.T read label.

For details on the D.U.T read method dialog see (Section 8 Page 79).

4.3 Defining the calibration procedure

This window is used to select a calibration procedure.



The 3rd and final stage of the **calibration setup** is to define the temperature steps called procedures. Procedures can be defined, saved and reused by any test device.

The **Procedure** can actually be first assigned in the **Edit Test device Dialog** when first creating the Test device (See Section 11.3 Page 103) or later here in the Calibration setup.

The following buttons allow the user to maintain the **Procedures** database.

4.3.1 Selecting an existing Procedure

Select a predefined Procedure definition.

Click on the list box and select the desired Procedure.

4.3.2 Creating a new Procedure.

Create a new Test setup definition.

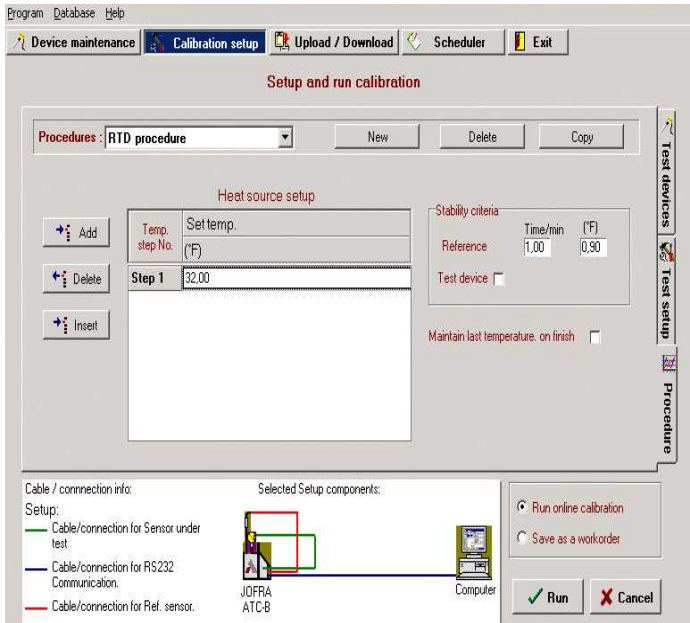
When creating a new procedure the user is requested to enter a new Procedure ID.

Request Procedure ID



Key in the new ID and click OK. An initialised Procedure page is presented ready for editing

Procedure definition page



4.3.3 Deleting a procedure

Delete

Delete the currently displayed Procedure definition. JOFRACAL requests confirmation prior to final deletion.

Be sure no other device uses this record.

4.3.4 Copy a procedure

Copy

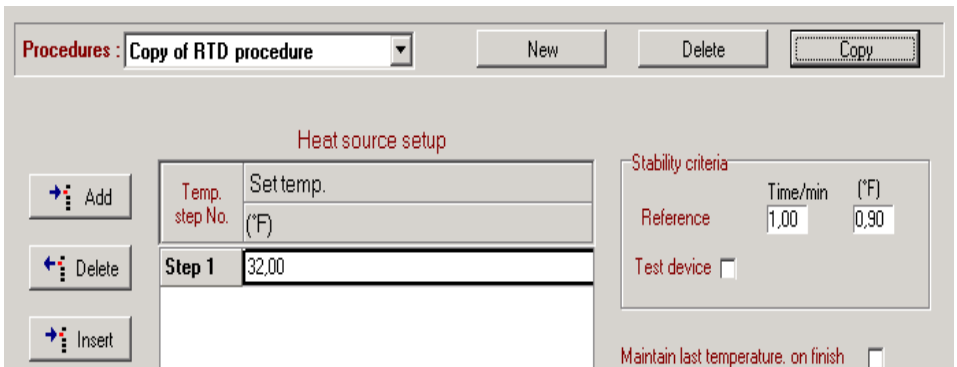
Copy the currently displayed Procedure. When copying the new procedure the user is requested to enter a new Procedure ID.

Request Procedure ID



Enter the new ID and click OK. An identical procedure with a new name is displayed in the Procedure page however with a new name.

Procedure definition page



4.3.5 Test Setup parameters

The following calibration variables are defined in this page:

Temperature steps

The calibration set temperature points are entered and must be within the admissible temperature range.

Source

This is only available when a 2nd source (eg calibrator + manual source) is selected in the calibration setup.

Step No.	Set point	Source
	(°C)	Src 1/Src 2
1	25,00	Source 1
2	28,00	Source 1
3	31,00	Source 2
4	33,00	Source 1
5	27,00	Source 2

Slope (gradient)

Is only applicable to Switch test calibrations.

The calibrator's temperature slope may be selected from within the limits of the calibrator type. If a value is selected outside the accepted range then JOFRACAL replaces the value with MIN or Max.



Add

Add a line to the calibration steps.



Delete

Delete a line to the calibration steps.



Insert

Insert a line to the calibration steps.

4.3.6 Stability criteria

Stability is applied to the True reference temperature and is optional for the test device.

The criteria are specified as a stability time and stability value (temperature tolerance). The source is regarded as being stable when

its temperature fluctuations (the Read or True temperature) are less than or equal to the given temperature tolerance in the given time. The temperature tolerance is specified as a \pm temperature and the time as a number of minutes.

☞ Note: If the criteria are too relaxed then the Set temperature may not be reached.

Stability criteria		
	Time/min	(°C)
Reference	5.00	0.50
Test device <input checked="" type="checkbox"/>	5.00	0.50

The Test device (READ) stability option is only visible if the user has Selected 'Convert to temperature' in Calibration setup. (See Section 8.7 Page 83).

Maintain last temperature

When the calibration process has been completed, JOFRACAL generally sets the calibrator to the storage temperature. See (Section 14.3.3 Page 132)

Maintain last temperature. on finish

If the Maintain last temp on finish check box has been checked then JOFRACAL will leave the calibrator at the last set temperature.

5. DEFINING SOURCES

The source dialog is used in the administration of the calibrator database and enables the user to select, create, delete and edit source definition records.

Source dialog

Source: 1

Source : Other RTC 156B New from Device New Delete Copy

Manufacturer : Ametek Denmark A/S

Serial No : 574364-00001

Model : RTC-156 B

Description : Jofra RTC-156 B incl.input.ref.inp& DLC

Resolution : 0.01 Load compensation active

Range

Min	Max
-50,00 °C	155,00 °C

Factory defaults

Calibration dates

Last calibration date: N/A

Calibration interval every : 12 months

Certificate note : Max. 30 characters.

Notes :

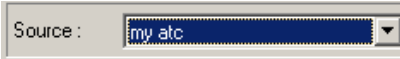
Source properties	
Internal sensor	YES
Reference input	YES
RS232 connection	YES
Workorder	YES
Load compensation	YES

Available test input	
T/C	YES
ohms	YES
mA	YES
Volts (Module)	
Switch	YES

Ok Cancel

If no source type is currently assigned then “No Selection” is the default.

5.1 Select a source



Use the drop down list of previously defined sources to select the desired source for the calibration. The source properties are displayed. See (Source properties Section 5.3 Page 53).

The list entry “No selection” is used if the user wishes to remove the current selection. Example. The user wishes to remove a Source 2 definition.

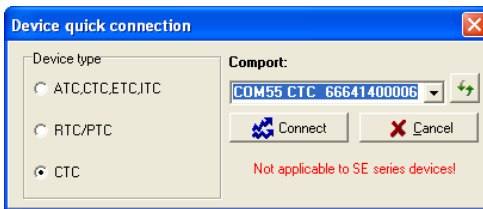
5.2 Create a new source from connected device



This button is used to make a quick connection to a source through the RS-232 serial ports or Ethernet connection (RTC/PTC) and retrieves the serial number.

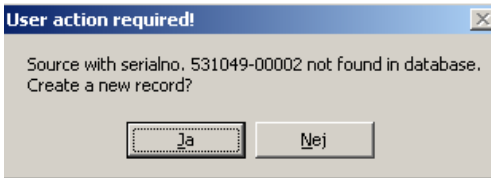
First the user is asked to select the serial port or Ethernet then Click the connect button.

Quick connect dialog



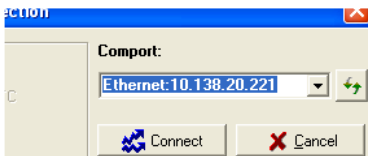
If a record with the same serial number and type exists, then JOFRACAL will retrieve and present that particular source. Or if not found ask the user to create a new source record.

Confirm creation of a new record




If the user answers yes a new source record will be created after prompting the user for a new ID.

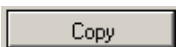
5.2.1 TCPIP Ethernet communication



Should the user choose the Ethernet TCPIP protocol, ensure the Ethernet cable is connected and the RTC/PTC IP address is configured.

 **Note.** The JOFRACAL IP address is set in the system configuration. Please refer to the RTC user manual regarding setting the IP address on the actual calibrator.

5.3 Copy a source record



Copy the current source to a new record.

The user is again prompted for a new ID then the new source with the same properties but new ID is displayed.

5.4 Delete a source record



Deletes the current source. JOFRACAL requests confirmation prior to the final deletion.

5.5 Source general data

This section describes the properties in the Source dialog.

Manufacturer

The calibrator manufacturer is displayed on the certificate.

Serial number

The calibrator serial number is displayed on the certificate.

Calibrator model

Select by dropdown list box the Calibrator type.

E.g. RTC-157B, PTC-350, ATC-320B, CTC650A etc...

Calibration dates

The date the calibrator was last calibrated and the interval between calibrations.

Description

The user's own description of the calibrator.

Minimum/maximum temperature

This is used to specify the calibrator's admissible temperature range. When the calibration procedure is set up, JOFRACAL controls whether the given test temperatures are admissible, i.e. whether the temperatures are within the temperature ranges of the calibrator.

Resolution

The maximum temperature resolution displayed on the calibrator.

Load compensation

Activate Dynamic load compensation (DLC) feature (RTC only).

Calibration notes

This field may be used to enter a comment about sensor usage (maximum 240 characters). Not displayed on the certificate.

Certificate note

This field may be used to enter a certificate comment (maximum 29 characters).

5.6 Source function properties

This area gives the user a quick insight regarding the calibrators' functionality. The information shows if the calibrator in question has the following function capabilities.

Source functions

Source properties

Internal sensor	YES
Reference input	YES
RS232 connection	YES
Workorder	YES
Load compensation	YES

Available test input

T/C	YES
ohms	YES
mA	YES
Volts (Module)	
Switch	YES

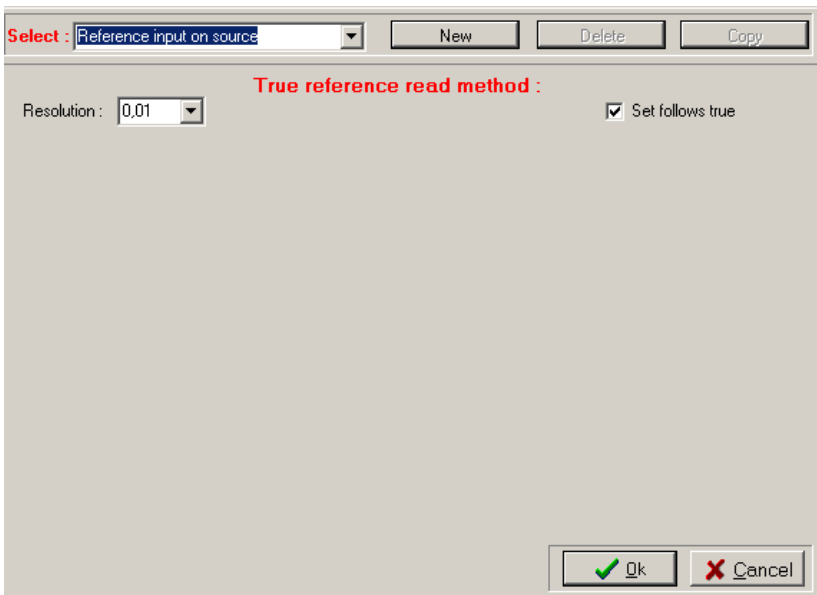
6. TRUE READING METHOD

The true reading method is one of the four main elements of a Calibration test setup and is called from the Calibration Setup page.

The purpose of this form is to define how the true reference temperature is to be measured.

It is important that the True reading method is defined before the device under test reading method, because it directly affects the available reading methods for the Test device.

True reading method dialog



Select : Reference input on source New Delete Copy

True reference read method :

Resolution : 0,01 Set follows true

Ok Cancel

There are 2 types of Reading methods, which can be selected.

- Predefined standard methods that follow with the JOFRACAL database.
- User-defined methods.

6.1 Predefined standard methods

Internal sensor. (Not available with Manual external source).

Reference input. Available on the Ametek ATC-B, RTC/PTC (B and C models) and CTC (C models) series only.

Whether these options are available depend upon the selected Master sources' function properties. (See Section 5.6 page 55)

6.2 User-defined methods

These are reading methods in which the operator has defined and normally includes some form of data logger or manual reading device.

Any User-defined methods can be used in both True and DUT reading methods.

Logging devices can be for example one of Ametek's DTI, DTI050, ASC or ASM-80x devices. Any other device is considered a manual logger as JOFRACAL cannot automatically read from the device and temperatures would have to be manually keyed.
(See logging devices Section 8.8 Page 86)

6.3 Selecting a True reading method


Select :

Use the drop down list of previously defined reading methods.


The methods listed are directly dependent upon the Master source used in the calibration.

E.g. "Reference input on source" is only an option when using the ATC, RTC B, PTC (B and C) and new CTC (C models) series calibrator.

6.4 Creating a user-defined method

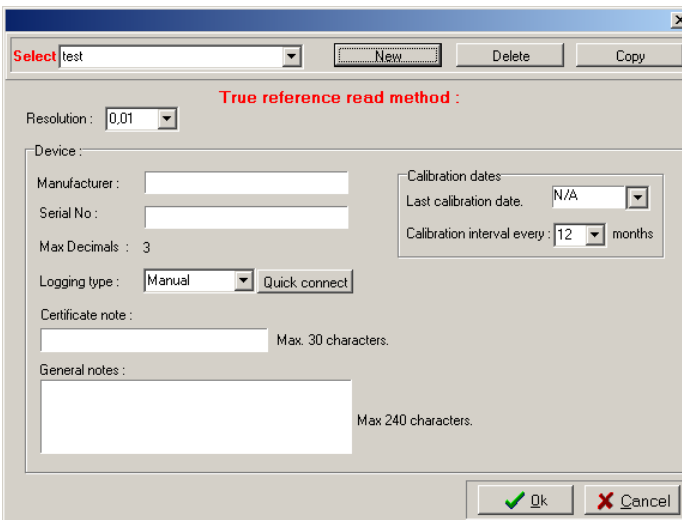
Click on the  button and the JOFRACAL prompts the user for an identification name.

Enter new True ID



Enter the new ID and Click .

A new empty form is displayed



True method dialog becomes visible to enable the user to define the logging device. (DTI, DTI050, ASC, ASM-80x or manual).


See True read parameters. (Section 6.7 Page 61) for a description of setting the dialog controls.

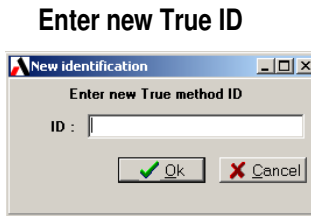
When all parameters and logger information are keyed, click the



button.

6.5 Copy a User-defined method

Click on the  button and the JOFRACAL prompts the user for an identification name.



Follow the same instructions as if creating a new User-defined method.

6.6 Deleting a True reading method

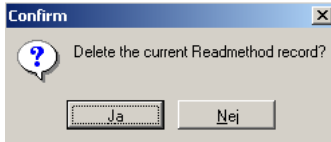
Only User-defined methods may be deleted from the list.

Select the reading method you wish to delete then click the delete



button.

JOFRACAL will ask the user to confirm the deletion.



Click Yes (Ja) to confirm deletion.

6.7 True read parameters

6.7.1 General parameters

Resolution:

Resolution :

Use the resolution control to set the decimals for the calibration true measurement reading.

The resolution can be set to: 1 (default), 0.1, 0.01 or 0.001 however options depend upon the calibrator or logger used for true reading.

Set follows true:

Set follows true

This is only available for ATC(B models), RTC/PTC (B and C models) and new CTC series calibrators. When this option is enabled, the calibrator's SET temperature is adjusted to the "True" temperature measured by the reference sensor. A result of this is that it takes the calibrator longer before it indicates stable.

☞ Note that it is only possible to reach the exact True temperature, if the stability criteria are tight enough. It is recommended to use the criteria $\pm 0.03^{\circ}\text{C} / 0.05^{\circ}\text{F}$ in 10 minutes to be stable.

6.7.2 Logging device parameters

The device section parameters of the **True read dialog** describe the logging device used for the True reading method and are visible in User-defined reading methods.

Device section of the True read dialog

Device :

Manufacturer : Ametek A/S

Serial No : DTI1000 - 943682

Max Decimals : 3

Logging type : DTI1000 Quick connect

Certificate note : Max. 30 characters.

General notes : Max 240 characters.

Calibration dates

Last calibration date. N/A

Calibration interval every : 12 months

Reference channel no : 2

No. of channels : 2

Manufacturer

The logger manufacturer is displayed on the certificate.

Serial number

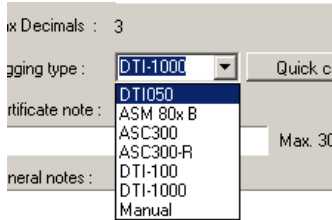
The logger serial number is displayed on the certificate.

Logging type

Select the device type from the drop down list.

The device list contains the names of logging devices known to JOFRACAL and can communicate via RS-232 serial port.

Select "Manual" if device is other than a DTI, DTI050, ASC or ASM-80x.



If the logging device (DTI, DTI050, ASC or ASM-80x) is connected via an RS-232 it is possible to use the **Quick connect** to retrieve the type and serial number of the device. (See Section **6.8** Page 64)

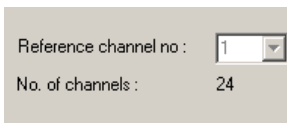
Warning.

Only the Asm-80x B models can be selected as a true reference source and is read directly by JOFRACAL.

Calibration dates

The date the logger was last calibrated and the interval between calibrations.

Reference channel no.



If the logger has more than 1 input channel then the reference channel needs to be defined, e.g. DTI or ASM-80x. Please note when an ASM-80x is the selected the reference channel is fixed at channel 1.

Resolution

Indicates the maximum temperature resolution displayed on the logger.

Notes

This field may be used to enter a comment about sensor usage (maximum 240 characters). Not displayed on the certificate.

Certificate note

This field may be used to enter a certificate comment (maximum 29 characters).

6.8 Quick connect to logging device:

Use the quick connect button to connect and retrieve information from a logging device through an RS-232 serial port. (DTI, DTI050, ASC, ASM-80x).

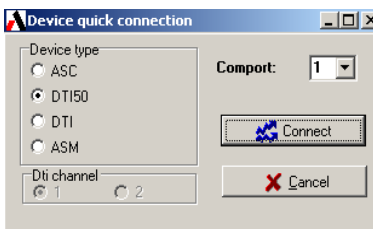
If successful it will use the information to automatically set the following controls.


- Device type list box
- Manufacturer
- Max decimals
- Serial number (DTI, DTI050 and ASM-80x only).

Using the quick connect is strongly recommended as it avoids any keying errors.

Click on the  button.

Quick connect dialog



The user must indicate the type of logger and the serial comport then click the  button.

7. REFERENCE SENSORS

The External reference sensor dialog is used in the administration of the reference sensor database and enables the user to select, create, delete and edit these records.

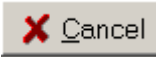
The dialog is called from calibration setup (See section 4.2 page 40) or the UpLoad / DownLoad page. (See section 9 page 89).

External reference sensor dialog:

- You may create any number of external reference sensors within the system, but two external reference sensors may not have the same name or the same serial number.



Closes the dialog and saves any changes.



Closes the dialog and asks the user if unsaved changes are to be discarded.

7.1 Selecting a Reference sensor



Use the drop down list of previously defined reference sensors to select the required sensor. The Reference sensor properties are displayed. (See Reference sensor properties Section 7.5 Page 68).

7.2 New reference sensor from device

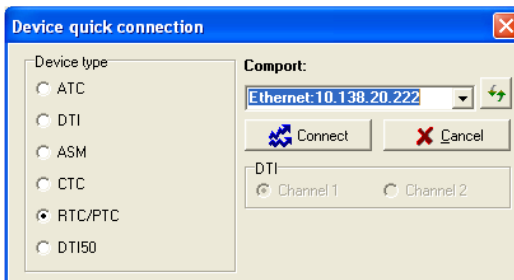
It is possible to create a new reference sensor record by using the



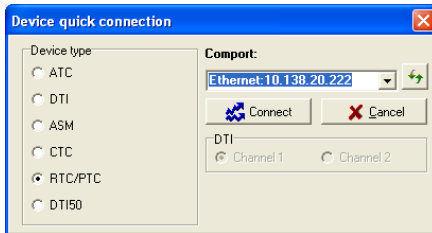
button. It allows the user to make a quick connection to an ATC, RTC/PTC, DTI, DTI050, ASC or ASM-80x device connected by a RS-232 serial port or Ethernet connection (RTC/PTC).


First the user is asked to select the serial port, then the device type.

Quick connect dialog



7.2.1 TCPIP Ethernet communication



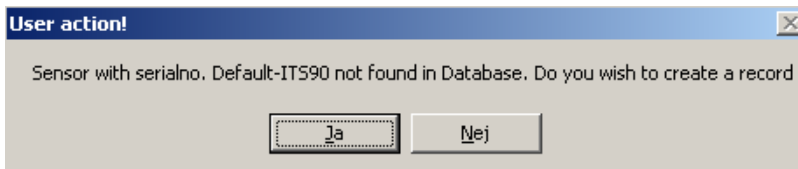
 **Note.** Should the user choose the Ethernet TCPIP protocol, ensure the Ethernet cable is connected and the RTC/PTC IP address is configured.

The JOFRACAL IP address is set in the system configuration. Please refer to the RTC user manual regarding setting the IP address on the actual calibrator.

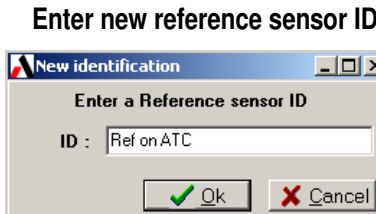
If successful, JOFRACAL retrieves the reference sensor serial number and the database scanned for an existing reference sensor.

If a record with the same serial number and device type exists then it will retrieve and present that reference sensor. If not it will ask the user to create a new reference sensor record.

Confirm creation of a new record

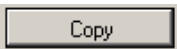


If the user answers yes, the user is prompted for a new ID.




Click OK and a new reference sensor will be created and displayed.

7.3 Copy reference sensor

The  button copies the current reference sensor to a new record. The user is again prompted for a new ID. An identical reference sensor is displayed albeit with a new ID.

7.4 Delete reference sensor

The  button deletes the current reference sensor. JOFRACAL requests confirmation from the user before the actual deletion.

7.5 Reference sensor properties

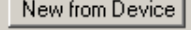
This section describes the properties in the reference sensor dialog.

Manufacturer

The reference sensor manufacturer is displayed on the certificate.

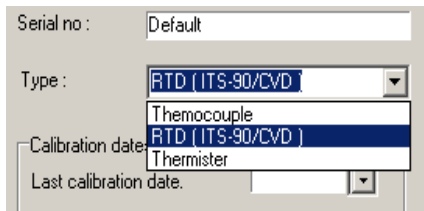
Serial number

The reference sensor serial number is displayed on the certificate.

It should also be unique. When using the  button it is the retrieved serial number that is used to scan the database to check if an existing reference sensor already exists.

Reference sensor type

This dropdown control lists the available reference sensor types. The available choices depend upon the True reading method. This control is only active when creating a new sensor, otherwise the type cannot be modified..



Serial no : Default

Type : RTD (ITS-90/CVD)

Thermocouple

RTD (ITS-90/CVD)

Thermister

Calibration date

Last calibration date.

Calibration dates

The date the reference sensor was last calibrated and the interval between calibrations.

Minimum/maximum temperature

This is used to specify the reference sensors' admissible temperature range.

Notes

This field may be used to enter comments about sensor usage. Maximum length 240 characters. Not displayed on the certificate.

Certificate note

This field may be used to enter a certificate comment.
(Maximum length 30 characters).

7.6 Sensor parameters / coefficients

This area of the form enables the user to define and download the relevant sensor parameters.

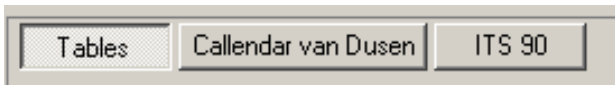
There are 3 types of parameters/coefficients the user can work with.

Tables: Used with ATC (Section 7.7.7 Page 76)

Callendar van Dusen: Used with DTI, DTI050, ASC or ASM-80x
(Section 7.7.9 Page 77)

ITS 90 : Used with DTI(2.0+), DTI050 or ASM-80x (Section 7.7.8 Page 77).

Tab controls to the 3 parameter types



The user can move from page to page by selecting the desired tab.

Warning.

It is the parameter page selection that determines which type of parameters are downloaded or uploaded from the reference sensor.

Example: If Callendar van Dusen is selected and the user starts to download, it is the van Dusen values that are sent to the device, not ITS 90. The exception to this is when an ATC is connected. Tables are downloaded regardless of the selection.

Connect / disconnect button.



Overwrite the current values with default values.

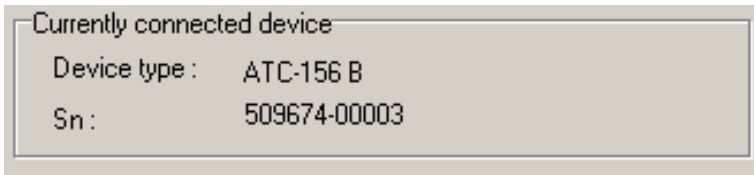


Upload parameters from connected device.



Upload parameters from connected device.

Connection status panel



This panel displays the details of the currently connected device.

7.7 Up/Downloading reference sensor coefficients

Before any reference sensor data can be downloaded to a reference sensor, the user must first connect to the device containing the sensor.

 **NOTE.**

Up/download of coefficients does not apply to RTC/PTC, new CTC series or DTI050.

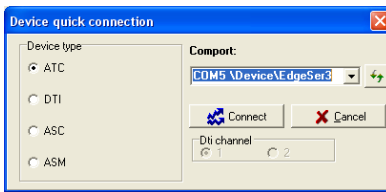
Please refer to the CON050 software manual found on the same USB memory stick for instructions to configure sensors connected to these devices.

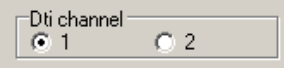
7.7.1 Connecting

Click on the  button.

Select the serial port and the device type.

Quick connect dialog



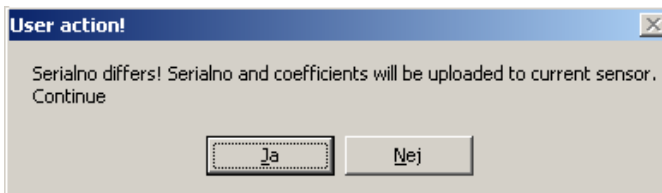
DTI Channel. If you select a DTI the user is also required to select the channel number. 



Warning:


When a connection is made there is no immediate verification that the reference sensor matches the reference sensor the user is currently editing.

However the user receives a warning at up/download from the device.



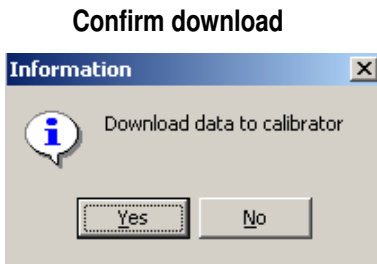
The user can also select another sensor while connection is open.

7.7.2 Disconnecting

To close the current connection, click on the  button or simply close the dialog box by click the OK or Cancel buttons.

7.7.3 Downloading

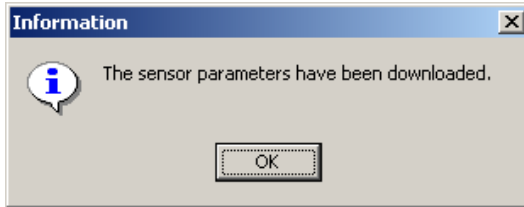
Click the  button to download parameters to the currently connected device.



After confirmation is received JOFRACAL begins to send the sensor data to the device.


JOFRACAL then informs the user when download is complete.

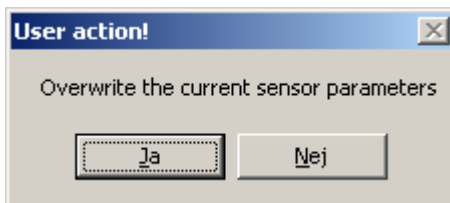
Successful download



7.7.4 Uploading

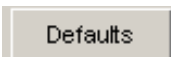


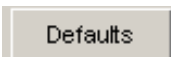
Click the  button to upload sensor parameters from the connected device.



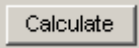
After confirmation is received JOFRACAL begins to load sensor data up from the device.

7.7.5 Default values



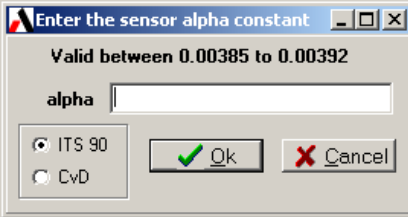
Click on  button to load the default values of the display parameter type.
Example. If tables are selected then the default table values are loaded.

7.7.6 Calculate coefficients

The  button in the Tables parameter page is used to generate Van Dusen or ITS 90 coefficients based on the data found in the table grid.

The user is prompted for information in the following form.

Calculate sensor coefficients

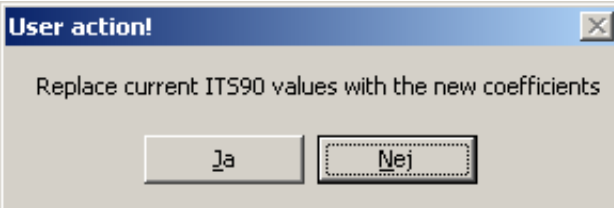


The dialog box titled "Enter the sensor alpha constant" has a close button (X) in the top right corner. Below the title bar, it states "Valid between 0.00385 to 0.00392". There is a text input field labeled "alpha". Below the input field, there are two radio buttons: "ITS 90" (which is selected) and "CvD". At the bottom right, there are two buttons: "Ok" with a green checkmark and "Cancel" with a red X.

The user must choose which set of temperature calculation coefficients are to be created ITS 90 or Callendar van Dusen. If ITS 90 is selected the user must also enter an "alpha" constant value.

When the calculations are complete the user is asked to confirm overwriting the existing values.

Confirm replacement of existing data



The dialog box titled "User action!" has a close button (X) in the top right corner. The main text reads "Replace current ITS90 values with the new coefficients". At the bottom, there are two buttons: "Ja" (Yes) and "Nej" (No), with the "Nej" button highlighted with a dashed border.

JOFRACAL then jumps to the parameter page with the fresh calculated coefficients displayed.

7.7.7 Tables

The 'Tables' page consists of a grid containing the ohms-temperature relationship over a certain temperature range.

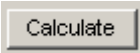
Ohms-temperature relationship

Steps	Temperature	Ohm
Step 1	-200,0000	18,5201
Step 2	-100,0000	60,3395
Step 3	0,0000	100,0000
Step 4	100,0000	138,5055
Step 5	200,0000	175,8560
Step 6	300,0000	212,0515
Step 7	400,0000	247,0920
Step 8	500,0000	280,9775
Step 9	600,0000	313,7080
Step 10	700,0000	345,2835

Use the **Add step** and **Del step** buttons to add and delete the steps.

Editing the temperature - ohms

Key values in the grid cells, press ENTER and ARROW to move to next cell.



The **Calculate** button is used to generate Callendar van Dusen or ITS 90 coefficients based on the data found in the table grid. (See Section 7.7.6 Page 75)

7.7.8 ITS 90

The ITS 90 coefficients can only be used with the DTI-1000 version 2.0+ and ASM-80x B version.



7.7.9 Callendar van Dusen

The Callendar van Dusen coefficients can be used with the ASC, ASM-80x B models and both DTI's (100, 1000).

Tables	Callendar van Dusen	ITS-90
<u>IEC 751 coefficients DTI & ASC</u>		
R0	1,000000E+02	
A	3,908300E-03	
B	-5,775000E-07	
C	-4,183000E-12	

8. D.U.T READING METHOD

The Device Under Test reading method is one of the four main elements of a Calibration test setup and is called from the Calibration Setup page. (See Section 4.2.2 page 43)

The purpose of this form is to define the measuring method for the device under test.

D.U.T reading method dialog

There are 2 types of Reading methods, which can be selected.

- Predefined methods
- User-defined methods.

8.1 Predefined standard methods

Input on device. RTC/PTC, ATC, SE and switch on CTC, ITC type calibrators.

Manual Read. Manual test devices only.

Dti (available channel). Use the available channel on the same DTI defined in the True reading method.

Whether these options are available depend upon the function properties of the selected Source 1. (Section 5.6 page 55)

8.2 User-defined methods


(See True read - User-defined methods. Section 6.2 page 58)

8.3 Selecting a D.U.T reading method

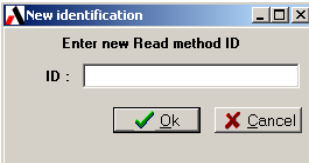
Select : ASC 2 

Use the drop down list of previously defined reading method. The methods listed are directly dependent upon the Source 1 and True reading method.

8.4 Creating a user-defined method

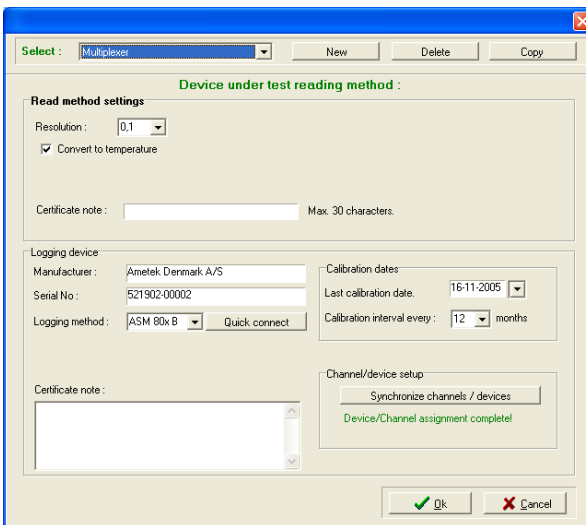
Click on the  button and the JOFRACAL prompts the user for an identification name.

New read method ID



Enter the new ID and Click .

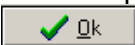
A new empty form is displayed and ready for editing.



When a user-defined method is selected the **logging device section** of the dialog is visible to enable the user to define the logging device. Example DTI, DTI050, ASC, ASM-80x or manual.


See D.U.T read parameters (Section 8.7.1 Page 83) for a description of all parameters.

When all parameters and logger information are keyed, click the



button to save the information.

8.5 Copy a User-defined method

Click on the  button and the JOFRACAL prompts the user for an identification name.


Enter new read method ID



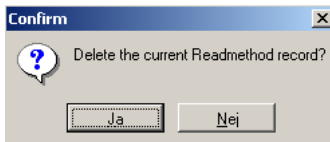
Follow the same instructions as if creating a new User-defined method.

8.6 Deleting a D.U.T reading method

Only User-defined methods may be deleted from the list.

Select the reading method you wish to delete then click the delete  button.

JOFRACAL will ask the user to confirm the deletion.



Click Yes (Ja) to confirm deletion.

8.7 D.U.T read parameters

8.7.1 General parameters

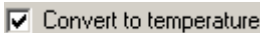
Resolution:

A software interface element for resolution control. It consists of a rectangular box with the text "Resolution:" on the left and a dropdown menu on the right. The dropdown menu is currently set to "0,01".

Use the resolution control to set the decimals for the calibration D.U.T measurement.

The resolution can be set to: 1 (default), 0.1, 0.01 or 0.001 however options depend upon the calibrator or logger used for reading.

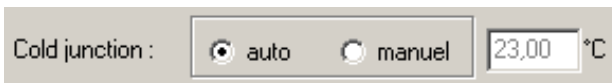
Convert to temperature:

A software interface element for the "Convert to temperature" option. It features a checked checkbox followed by the text "Convert to temperature".

Determines whether the sensor's measured data should be converted into temperatures. This is achieved using standard formular resident in the calibrator.

Cold junction compensation

When TC inputs are used, the Cold Junction compensation function is displayed:

A software interface element for cold junction compensation. It includes the text "Cold junction:" followed by two radio buttons labeled "auto" and "manuel". The "auto" radio button is selected. To the right of the radio buttons is a text input field containing the value "23,00" and a degree Celsius symbol "°C".

Use this function in one of two ways:

Auto: Where the calibrator measures the TC input temperature automatically.

Manual: For online measurements, the temperature defined in this field is used. Note that this temperature is not saved. It is only displayed in the certificate.

For work orders, the temperature is entered via the calibrator during the calibration. The calibrator prompts you for the value before measuring.

8.7.2 ASM-80x as Logging device parameters

Input read via ASM

This control appears if the D.U.T primary reading method involves input on the RTC/PTC, ATC or either an ASC or a DTI. Select this control if you wish to use the ASM-80x together with primary reading device (ASC, DTI or ATC/ RTC/PTC calibrators). Selecting this will then release the “Synchronize channels/test device” control explained in the following section.

8.7.3 Logging device parameters

The device section parameters of the D.U.T **read dialog** describe the logging device used for the True reading method and are visible in User-defined reading methods.

Logging device section of the D.U.T read dialog

Manufacturer

The logger manufacturer is displayed on the certificate.

Serial number

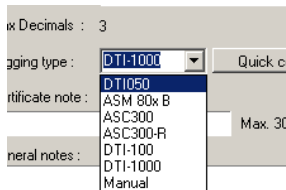
The logger serial number is displayed on the certificate.

Logging type

Select the device type from the drop down list.

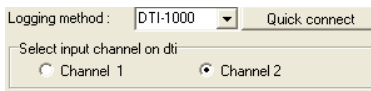
The device list contains the names of loggers known to JOFRACAL and can communicate via RS-232 serial port.

Select "Manual" if device is other than a DTI, ASC or ASM-80x.



If the logging device (DTI, DTI050, ASC or ASM-80x) is connected via an RS-232 it is possible to use the **Quick connect** to retrieve the type and serial number of the device. (See Section 6.8 Page 64)

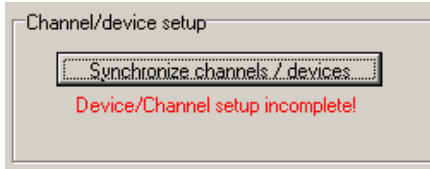
Note! When a DTI is the selected logging device, the “Synchronize channels/test device” is used to select the input channel on the DTI. However when an ASM-80x is used as an add-on to the DTI, the following control appears to determine the input channel connected to the ASM-80x, while the “Synchronize channels/test device” control is used to coordinate the ASM-80x channel/test device setup.



Calibration dates

The date the logger was last calibrated and the interval between calibrations.

Channel - Device setup



If the logger has more than 1 input channel then the user must define the channel the test device is connected to. If this parameter is not in place a warning is displayed as in the above example.

Synchronizing of devices and channels is designed for future use of scanners with multiple input channels.

Click on the to synchronize the channels. (See Section **8.8** page 86).

Resolution:

Maximum resolution for the logger.

Notes

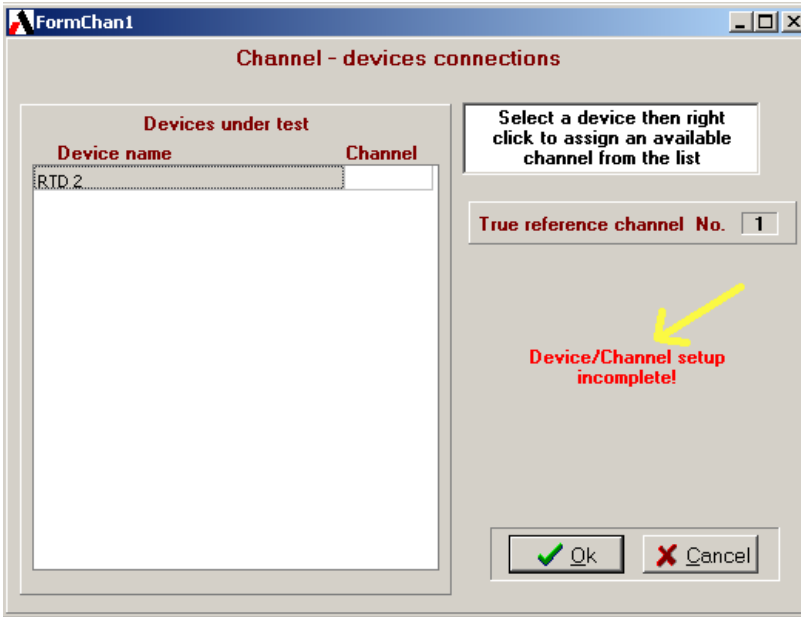
This field may be used to enter a comment about sensor usage (maximum 240 characters). Not displayed on the certificate.

Certificate note

This field may be used to enter a certificate comment (maximum 29 characters).

8.8 Synchronizing logging devices

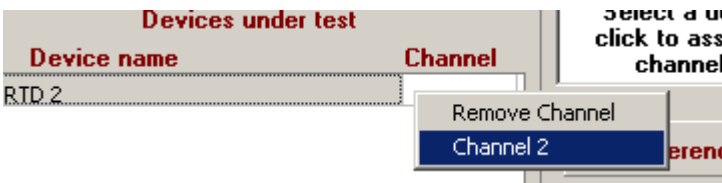
Define the test device / input channel connection(s).



The “Device name” lists contains the test device(s) in the calibration and their assigned channel number.

The warning in red **Device/Channel setup incomplete!** remains displayed until all devices have been assigned a channel number.

When all parameters are in place the warning is replaced with **All devices assigned OK!**



Select a channel.

You cannot directly edit the channel number.

Select the device you wish to edit then “Right” mouse click to display the available options. You can either remove the current channel setting or assign another from the floating menu list.

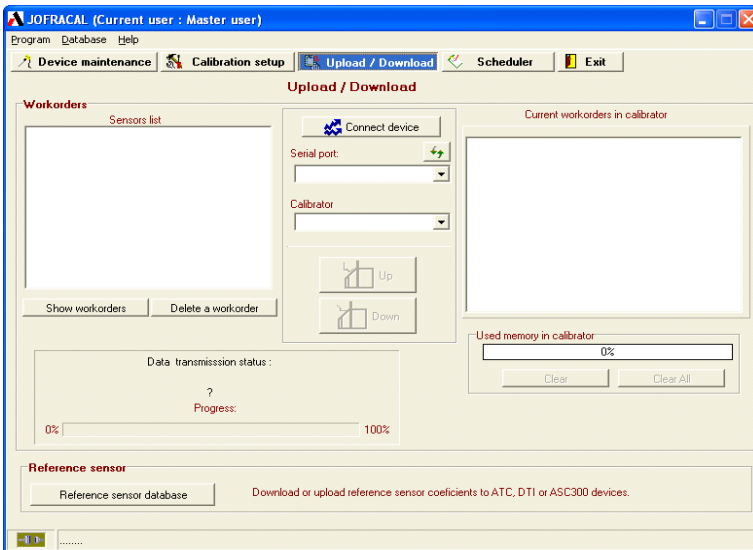
9. UPLOAD/DOWNLOAD



This function can only be used with the Jofra RTC/PTC (B models) and the ATC (B modul) version calibrators.

Using this function with the ATC/RTC/PTC series calibrators, allows calibration procedures to be semi-automated. Calibrations are defined in the JOFRACAL 'Calibration Setup' and saved as work orders. These work orders are then downloaded to the ATC calibrator via the RS-232 interface or RTC/PTC via a USB port. Calibrations are run offline with the results saved as certificates in the calibrator, which can be later uploaded to JOFRACAL.

The Reference sensor panel contains a link to the Reference sensor dialog where it is possible to up/download sensor coefficients. (See Section 7 Page 65)



Note. The user is prevented from leaving the Up/Download page while the communication to the connected calibrator is open. (See Section 9.1.6 page 94).

9.1 Work orders

The calibrator can store up to 20 work orders. When all the calibrator's memory is used, it is necessary to remove (delete) some of the resident work orders before new ones can be downloaded.

9.1.1 Creating a work order

Defining a work order is the same as preparing and running an online calibration (See Section 4 Page 38) with the exception that the user must select Save as a workorder then click .

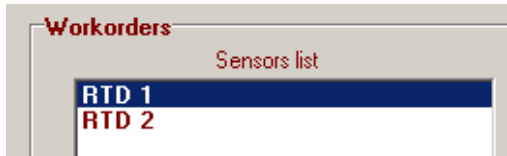


JOFRACAL jumps directly to the Up/down screen with the list of defined calibration work orders, ready for downloading.

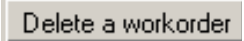
9.1.2 The work order list

Click on the to display the defined work order calibrations if not already listed.

Work orders ready for download

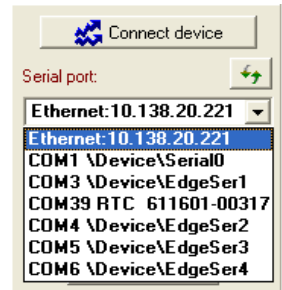


To delete a work order, simply select an ID from the Sensor list and click

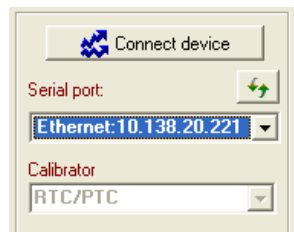



9.1.3 Connecting to the Temperature calibrator

To connect to the temperature calibrator, select a serial port or the TCP/IP Ethernet option(RTC only), then click on the Connect button.



When the Ethernet or an RTC specific virtual serial port is selected then the calibrator type list is disabled with the RTC the only option.



 Note. The JOFRACAL IP address is set in the system configuration. Please refer to the RTC user manual regarding setting the IP address on the actual calibrator.



Note. When connecting to an RTC/ATC calibrator, ensure that it is in normal operation mode and not running any tasks such as Autostep, Switch or calibrations.

After communications are opened successfully JOFRACAL retrieves the work order list currently in the Calibrator. (See Section 9.1.4 page 92).



Also  upload and  download buttons are active during open communications.



The user can now download or upload calibration procedures to and from the temperature calibrator.

9.1.4 Current work orders in calibrator

ATC series

These are listed in the Grid to the right hand side of the page along with details of their completion status.

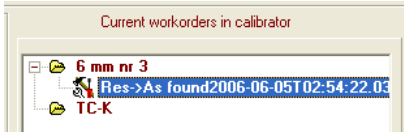
List of work orders currently in the ATC

Current workorders in calibrator		
Sensor ID's	AsF	AsL
Man dut	No	No

RTC/PTC series

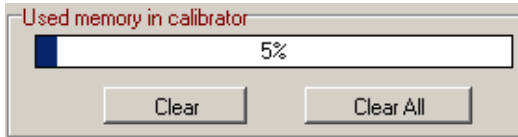
These are listed in a explorer tree like interface on the right hand side of the page. Each work order can store several calibrations at any time.

List of work orders currently in the RTC/ PTC



There is also a memory gauge indicating the available space in the calibrator.

Memory usage on the Calibrator



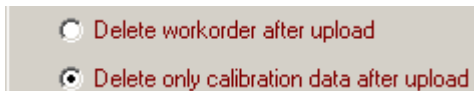
Clear

Delete the selected work order on the calibrator.

Clear All

Delete all the listed work orders on the calibrator.

It is possible to automatically delete the entire work order or just the results, after uploading to the PC, depending on the following selection.




9.1.5 Up / downloading work orders

To download a calibration select a sensor from the work orders list then

Click the  button.

When the download is completed

- The work order ID appears in the "Work orders in calibrator" window.
- The work order ID is deleted from the PC's "work order" list.
- The calibrator memory usage gauge will be updated.

To upload any completed work orders, select from the "work orders" in "calibrator" list then select the job from the list then click the  button.

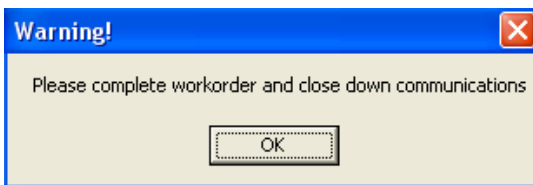
When upload is complete JOFRACAL will either delete the work order itself from the calibrator or the results. The certificate can then be viewed from the Viewing certificates in the Device maintenance page. (See Section 3.1.3 Page 30)

9.1.6 Disconnecting the calibrator Up/Download

It is important to disconnect the device when finished or before proceeding to other areas of JOFRACAL.

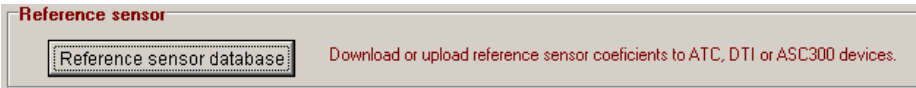
Therefore JOFRACAL prevents the user from leaving the Up/Down load page until clicking the  button closes communications.

The following warning will appear if the user attempts to leave the Up/Down load page.



9.2 Reference sensor.

Allows quick access to the reference sensor dialog click on the Reference sensor database button.



See (Section 7 Page 65) for details regarding maintaining reference sensor databases.

10. SCHEDULER

The scheduler allows a user to easily administrate the calibration of test devices.


Typically a supervisor would build a list of devices due for calibration, flag them for calibration and if required generate a report for those responsible for the actual calibration.

JOFRACTAL scheduler page

The screenshot shows the JOFRACAL scheduler interface. The window title is "Jofra-Cal (Current user : Master user)". The menu bar includes "Program", "Database", and "Help". The toolbar contains icons for "Device maintenance", "Calibration setup", "Upload / Download", "Scheduler", and "Exit". The main area is titled "Scheduler" and contains a "Device list" table. On the left side, there are buttons for "Select devices", "Show scheduled", "Remove selected", "Remove all devices", and "Print listed devices". At the bottom, a status bar indicates "State No errors".

Device ID	Type	Last calibrated	Calibration due	Location	Schedule flag
Manual sensor	Manual Read	18-05-2004	18-05-2005	East/Department A/Electronic	<input type="checkbox"/>
RTD 1	Pt100	17-05-2004	17-05-2005	East/Department A/Electronic	<input type="checkbox"/>
RTD 1 F	Pt100	30-04-2004	30-04-2005	East/Department A/Electronic	<input checked="" type="checkbox"/>
RTD 2	Pt100	17-05-2004	17-05-2005	East/Department A/Electronic	<input type="checkbox"/>
RTD 2a	Pt100	17-05-2004	17-05-2005	East/Department A/Electronic	<input type="checkbox"/>
RTD 3	Pt100	17-05-2004	17-05-2005	East/Department A/production	<input type="checkbox"/>
RTD mA	Pt100	06-05-2004	06-05-2005	East/Department A/Electronic	<input type="checkbox"/>
Rtd volts	Pt100	05-05-2004	05-05-2005	East/Department A/Electronic	<input checked="" type="checkbox"/>
Rtd volts0-12	Pt100	10-05-2004	10-05-2005	East/Department A/Electronic	<input type="checkbox"/>
Switch	Switch	26-04-2004	26-04-2005	//	<input type="checkbox"/>
TC volts	Thermocouple	05-05-2004	05-05-2005	//	<input type="checkbox"/>
Test RTD	Manual Read	05-05-2004	05-05-2005	East/Department A/Electronic	<input type="checkbox"/>
aaa	Pt100	N/A	N/A	//	<input type="checkbox"/>


10.1 Selecting devices

To select devices from the Test device database click the  button, which opens the JOFRACAL search dialog. (See Section 108 Page 12).


The  button will display all the devices already flagged as scheduled for calibration.

10.2 Scheduling for calibration

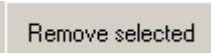
The devices displayed in the list can now be scheduled or unscheduled through the checkbox controls on the right hand side.

This can be done on an individual basis by using the checkboxes on each device row 

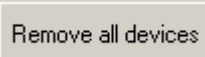
or

schedule all devices at once by checking the top checkbox 

10.3 Remove from schedule list

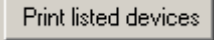
 Remove selected

Remove a selected device from the list.

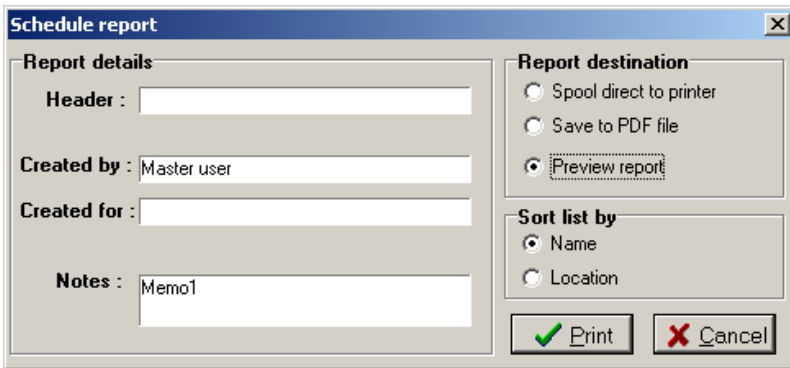
 Remove all devices

Remove all devices from scheduler list.

10.4 Scheduled devices report

The  button will generate a report from the listed devices. JOFRACAL requests various report parameters.

Scheduled devices report parameters



Schedule report

Report details

Header :

Created by : Master user

Created for :

Notes : Memo1

Report destination

Spool direct to printer

Save to PDF file

Preview report

Sort list by

Name

Location

To give the report more flexibility the user can define the following report parameters:

- Report header.
- Created for. Who is the report for?
- Notes. Any relevant comments.

The user can also determine the destination of the report and the sort sequence for the listed devices.

11. HOW TO EDIT A TEST DEVICE

Device under test data form contains the properties of a test device instrument.

Edit test device properties – Maintenance:

Device under test (DUT)

Device ID : PT100-reserve
 Manufacturer : Ametek Denmark A/S
 Serial No : pt100-12
 Description : Pt sensor

Temperature range:
 Min : 32.00 °F Max : 752.00 °F

Pass/Fail criteria : ±(0.2 %rdg.+ 0.90)

Calibration
 Last certificate No. : test auto_48
 Last certificate : 21-04-2004
 Calibration interval : 12 months
 Scheduled :
 Test setup : test
 Procedure : Switch proc

Certificate note : Max. 30 characters.
 Notes :

Category : Temperature
 Device type : Rtd
 Sub type : P100(90)385
 Output type : Native (default)
 Input wires : 4 wire

Location / Tags
 Factory => Eastern site
 Department => Electronic
 Sections => R&D



Changes can only be made by a user with MASTER access.

11.1 Test device properties

This section describes briefly the fields where you can enter information and where this information is displayed.

Manufacturer

The sensor's manufacturer is displayed on the certificate.

Serial number

The sensor's serial number is displayed on the certificate.

Sensor type, subtype and output properties

(See Section 11.4 Page 103)

Last calibration date

Last certificate :	17-05-2004	▼
--------------------	------------	---

The date of calibration is automatically inserted in this field when JOFRACAL has calibrated a sensor. Any date entered manually will be overwritten when JOFRACAL performs a new calibration using the sensor. The field may be left empty. The current Windows[®] date format is shown to the right of the field.

Last certificate number

Last certificate No. :	Schema 3 cert_2
------------------------	-----------------

JOFRACAL automatically inserts the certificate number of the last calibration. Any text entered will be overwritten when JOFRACAL performs a new calibration using the sensor.

Calibration interval

Calibration interval :	12	months
Scheduled	1	
Test setup :	2	
	3	- input
	6	
Procedure :	12	6
	18	
Certificate note :	24	

Define how often the test device should be calibrated by selecting the interval (months) from the dropdown list. JOFRACAL uses the interval together with the last calibration date to warn uses of outdated test devices.

Scheduled

Check the control to mark the test device as scheduled.

Pass/Fail criterion

The Pass/Fail criterion is shown as two fields. The first is a percentage deviation calculated on the basis of the measured values, the second is an absolute temperature deviation. The permitted tolerance is the sum of these two tolerance values. The tolerance is used to determine the state of the *Pass/Fail* field on certificates.

Example: The Pass/Fail criterion is specified as $\pm(1.7\% \text{ rdg.} + 0.8^{\circ}\text{C})$. The source is set to 45°C . When the source and the sensor under test are stable, the true temperature is 45.0°C and the sensor reads 46.2°C . The tolerance is calculated as $\pm(1.7\% \text{ of } 45.0^{\circ}\text{C} + 0.8^{\circ}\text{C})$, i.e. $\pm(0.77^{\circ}\text{C} + 0.8^{\circ}\text{C}) = \pm 1.6^{\circ}\text{C}$. If the absolute difference between the measured temperature and the true temperature is greater than the tolerance, the *Pass/Fail* field will be set to *Fail*. In this case however, the difference is $46.2^{\circ}\text{C} - 45.0^{\circ}\text{C} = 1.2^{\circ}\text{C}$, i.e. less than the tolerance of $\pm 1.6^{\circ}\text{C}$, and the *Pass/Fail* field is set to *Pass*.

Notes

This field may be used to enter a comment about sensor usage (maximum 240 characters). Not displayed on the certificate.

Certificate note

This field may be used to enter a certificate comment (maximum 29 characters).

Sensor location tags

Each test device has 3 location parameters to the identification and search process. The operator determines how many location levels are implemented.


These are optional. The explanatory location labels can be changed in the System Setup, see section **14.4.1** page 133.

Minimum/maximum temperature

This is used to specify the sensor's admissible temperature range. When the calibration procedure is set up, JOFRACAL controls whether the given test temperatures are admissible, i.e. whether the temperatures are within the temperature ranges of the sensor and the source.

11.2 Defining a test device calibration setup

It is possible to create or assign an existing calibration setup definition from within the "Edit test device " dialog.

Click on the select  button to define the Test setup. See (Section 4 page 38)

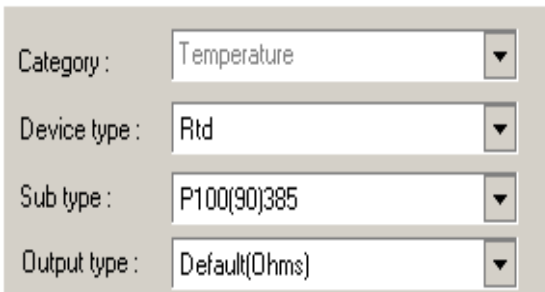
11.3 Defining a test device Procedure

It is possible to create or assign an existing procedure definition from within the “Edit test device “ dialog.

Click on the select  button to define the temperature steps. See (Section 0 page 45)

11.4 Defining a device type

Every test device has the following properties, which completely describe its attributes.



Category : Temperature

Device type : Rtd

Sub type : P100(90)385

Output type : Default(Ohms)

Category

There are 3 fields of measuring JOFRACAL will work in:

- Temperature (See temp definitions Section 11.4.1page 104).
- Pressure (See JOFRACAL pressure manual)
- Signal (See JOFRACAL signal manual)

Each category offers a different set of Device type options as do different device types offering a different set of Sub types and output unit options.

Details of all the different Types, Subtypes and output options can be found below.

Note: Only temperature is implemented in JOFRACAL version 1.0

11.4.1 Temperature device definitions

Temperature Types

There are 4 categories of temperature sensors:

- RTD (Rtd Sub types Section 11.4.1.1.1page 104)
- Thermocouple (TC Sub types Section 11.4.1.1.2 page 105)
- Switch (No sub types)
- Manual. (No sub types)

Temperature device subtypes

11.4.1.1.1 Resistance Subtypes RTD

The possible RTD type selections are listed. Select from:

- *RTD P50(68)391*
- *RTD Pt-50M (Russian).*
- *RTD P100(90)385.*
- *RTD Pt-100 MILL.*
- *RTD P100(68)391.*
- *RTD Pt-100M (Russian).*
- *RTD P500(90)385.*
- *RTD P1K(90)385.*
- *RTD P100(90)391.*
- *RTD P50(90)391.*
- *RTD M50(90)428.*
- *RTD M100(90)428.*
- *RTD P10(90)385.*
- *RTD P50(90)385.*
- *RTD P200(90)385*
- *RTD P400(90)385.*

- *RTD M50(90)426.*
- *RTD M100(90)426.*
- *RTD M10(90)427.*
- *RTD H120(90)672.*
- *RTD H100(90)617.*
- *RTD P50(68)385.*
- *RTD P100(68)385.*
- *RTD M53(68)426.*
- *RTD P100(90)JIS.*
- *RTD YSI(90)400.*
- *RTD P100(90)392.*

11.4.1.1.2 Thermocouple – TC

The possible TC type selections are listed. Select from:

Select from:

- *TC Type E*
- *TC Type J*
- *TC Type K*
- *TC Type L*
- *TC Type N*
- *TC Type R*
- *TC Type S*
- *TC Type T*
- *TC Type XK (Russian)**
- *TC-HType B (not available in ATC calibrators)*

- *TC-H Type E*
- *TC-H Type K*
- *TC-H Type N*
- *TC-H Type R*
- *TC-H Type S*
- *TC Type U*
- *TC Type BP*
- *TC Type C*

A T/C input (TC module or TC-H module) is connected to the calibrator (see appendix **B.4** for connecting modules). The possible T/C type selections are listed.

☞ * For SE-calibrators with *TC module: Type XK (Russian)* input adds a temperature compensation to the measured temperature. This compensates for an error caused by the cold junction compensation in the input module at 23°C.

Output unit

Default
MA
Volts 0-4
Volts 0-12

Default output

- Ohms -> RTD
- mV -> Thermocouple

Input wires

Input wires :

Used for RTD type devices only.

Temperature Scale

Used only with the following input devices:

mA input, 4-20mA

V-DC Module: LOW, 0-4VDC

V-DC Module: HIGH, 0-12VDC

Temperature scaling			
Low input :	<input type="text" value="0"/>	=	<input type="text" value="0"/> °C
High input :	<input type="text" value="12"/>	=	<input type="text" value="400"/> °C

Note that the *Convert to temperature* field must be selected in the D.U.T reading method for the scaling to be used.

(See section 8.7.1 page 83).

The sensor's measured values (current or voltage depending on the input module) are converted to temperatures defined on the basis of a linear relationship between input values and temperatures. The relationship is determined by the two fields *Low input* and *High input*. The lowest input value (4mA or 0V depending on the input module) and highest input value (20mA, 4V or 12V) are equivalent to the temperatures specified here.


12. USING THE DEVICE SEARCH DIALOG

The Test device search dialog is used to select one or more devices from the test device database depending from where it is called.

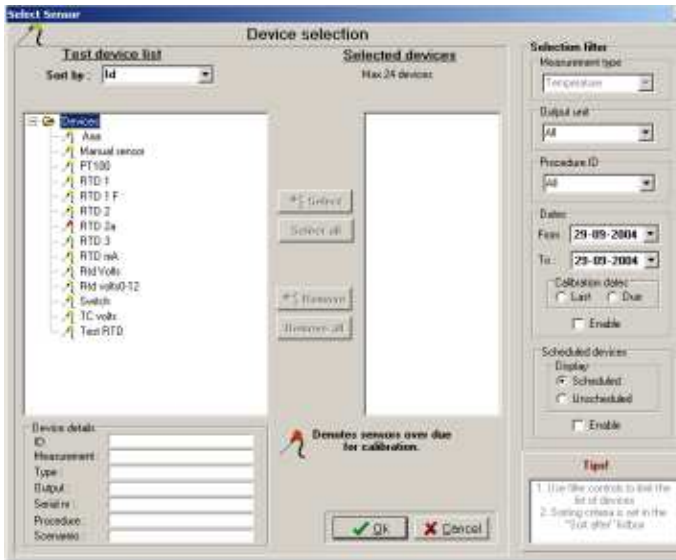
The list of test devices available for selection appears in the left panel while those selected appear in the right.

The test device list is in a typical Windows file browser format where maps can be folded or unfolded.

As the user navigates through the device list by mouse or cursor, details of the individual sensors can be seen below the list in the “device details”. The highlighted device can be selected either by a double

mouse click or by clicking on the  Select button.

Device search & selection dialog:



12.1 Selected / deselecting

Depending on where the search dialog is called from, the following controls are used for the selection process.



- Select the highlighted device (or Double mouse click)



- Select all devices listed (when called from the scheduler)



- Remove the highlighted device from the selected list.



- Remove all selected devices.

12.2 Sorting devices

Devices can be grouped and sorted according to their type, location, manufacturer or ID.

Sorting parameters



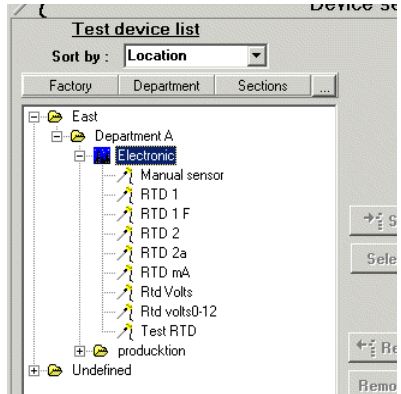
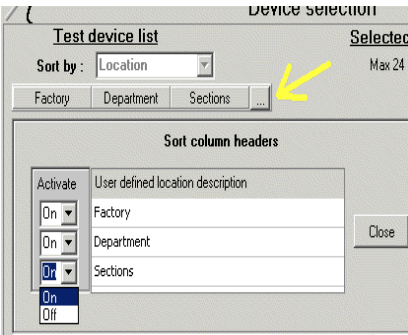
12.2.1 Sorting by location

When sorting by location the user can determine the levels of grouping/sorting by clicking the define button indicated by the yellow

arrow. The defined location levels can be activated or deactivated as desired.

Location sort parameters:

Devices sorted by location:



The location descriptions are defined in the system configuration. (See Location labels Section 14.4.1 Page 133).

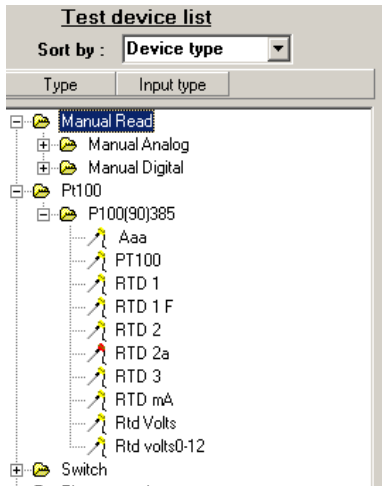


Note! It is essential that the users are careful with the keying of device location parameters for the location sorting to work correctly.

12.2.2 Sorting by device type

Devices are listed according to their type and subtype.

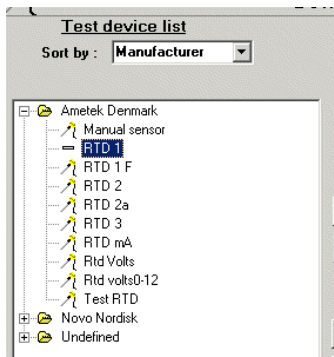
Devices sorted by device type:



12.2.3 Sorting by manufacturer

Devices are listed according to their manufacturer.

Devices sorted by manufacturer:

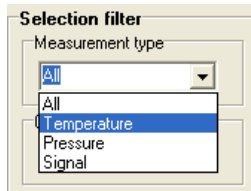


12.3 Selection filters:

The selection filter controls can refine the list of displayed test devices to a manageable level. There are several parameters the user can use to reduce the displayed devices.

12.3.1 Filter with device type and output unit

Type, output filters

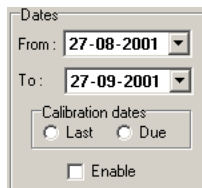


Measurement type: Temperature, Signal and Pressure.

Output units: Native (Ohms, mV, switch, manual), mA or Volts.

12.3.2 Filter with dates

Date range filters

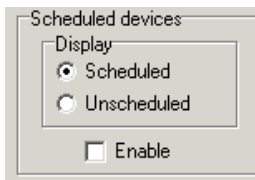


Display devices within certain dates. The date range can be applied to either last calibration or calibration due.

To activate the date range, check the Enable checkbox.

12.3.3 Filter using the device scheduled property

Scheduled property filters

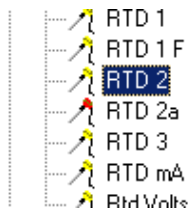
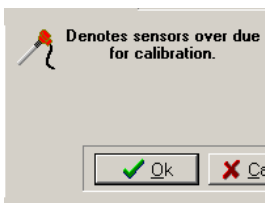


All test devices contain a scheduled flag property. This can be used to filter the listed devices.

To activate the date range, check the Enable checkbox.

12.3.4 Due for calibration indicator.


All test devices due for calibration are listed with a red icon.

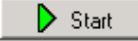


13. ONLINE CALIBRATION

The online **calibration** page enables the user to run and follow progress of a calibration.

The online **calibrating** page tab  is only visible when an online calibration is in progress and actually replaces the **EXIT** tab.

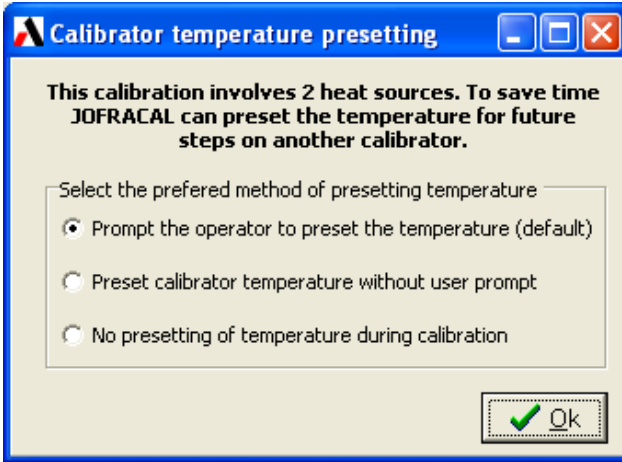
Directly after clicking  from the calibration setup page the user is presented with either the single device calibration form or the multi device calibration form, depending on the number of test devices.

Communication lines have been established and JOFRACAL awaits the  command from the user.

13.1 Preheating calibrators during temperature calibration

If several sources are used in a calibration, JOFRACAL can facilitate the preheating/cooling of the calibrator before it is actually used.

The following dialog is displayed to offer the user 3 possibilities to handle the pre-setting of temperatures.



1. Prompt the operator to preset temperature on the calib
JOFRACAL will ask the operator if the temperature on a calibrators involved in the next step is to be preset.
2. Preset calibrator temperature without user prompt
JOFRACAL will preset temperatures on a calibrator Involved in the next step automatically.
3. Prompt the operator to preset temperature on the calib
No presetting of temperatures. JOFRACAL will set the relevant temperature at the start of each step.

13.2 Single device calibration

When calibrating a single device the data grid rows represent the temperature points for the calibration. The current steps' reading can be seen in the "Current Data" area.

Single online calibration form:



13.3 Multi device calibration

During multi-device calibration the data grid rows represent the test devices involved in the calibration.

The test device being currently read is always highlighted.

Below is an example of a multi calibration where devices are read one at a time. After stability is acquired, the readings are logged, then

JOFRACAL moves to the next device requesting the user to change test device if required.

Multi device online calibration form:

CURRENT DATA					
Step no. 2 of 3	Set:	38.00 °C	Master: ATC Cooler	Serialno : 509674-00003	
	True	37.46 °C	Variations less than ± 0.50°C during 2Min.		Stable
RTD 1	Sensor	37.42 °C	Variations less than ±0.50 °C during 2Min.		

Device Id	True	Device	Time to stability	Deviation	Pass/Fail
RTD 1	37.39	37.35	logged	-0.04	Pass
RTD 2	37.46 °C	37.42 °C	0:55 (mm:ss)	-	-

RTD 1	Set temp°C	True°C	Test °C	Diff°C	Pass
Step 1	36.00	35.51	35.40	-0.11	Pass

13.3.1 Viewing previous steps in multi-device calibration

Results from previous steps can be viewed by Left clicking the devices' row followed by a right mouse click. See the above picture.

Note. The test device being currently read is always highlighted regardless of the device results you may be viewing

13.4 Multiple calibration with scanners

If a JOFRACAL recognized scanner or the 2 channels of the DTI is used to read the test devices, then all devices are read simultaneously requiring no manual changing of test devices by the user.

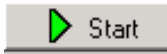
Multi device online using scanner

Device Id	True	Device	Time to stability	Deviation	Pass/Fail
RTD 2	37.93 °C	38.31 °C	1:55 (mm:ss)	-	-
RTD 2a	37.93 °C	37.95 °C	1:55 (mm:ss)	-	-

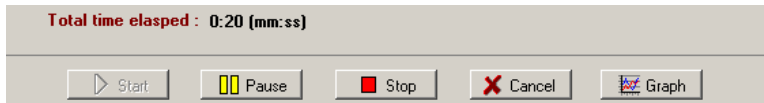
13.5 Online control buttons

Only the **Start** and **Cancel** buttons are enabled which are used to begin and cancel the online calibration.

No data is logged initially. Start the calibration process by clicking



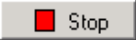
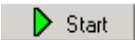
Online control buttons




When the calibration is in progress the remaining control buttons are enabled.

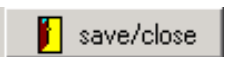
The button closes down the calibration completely and returns to the Calibration setup page.

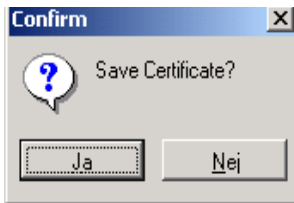
To interrupt the calibration process, click . Click again to continue the process.

To stop the calibration, click the  button. The  is then enabled to allow the user to restart the calibration at temperature step 1, and all previously logged data is deleted.

To view online graph information click on the  Button. See (Section 13.9 Page 122).

13.6 Calibration completion

When the calibration is complete the  button appears allowing the user to close and save the calibration results as a certificate.



The user is asked if the results are to be saved. If Yes then the 'Save certificate' form is displayed.

13.7 Saving the calibration certificate

When the user chooses to save the calibration results the following screen is presented.

Save results as certificate dialog

Test device: 6 mm nr. 1

The certificate will be saved as
Cert 102 C

Certificate status
 As found As left

User name
Master user

Copy alternatives
 Spool direct to printer
 Generate PDF file copy
 Export certificate to a file (.txt)

The default values when the Window is displayed are defined in the system configuration. See (Section 14 page 127).

13.7.1 Certificate name

If Automatic certificate number applies (see Section 14.2.1 page 128), it is still possible to edit the default certificate ID by clicking

button.

13.7.2 Certificate copy alternatives

Apart from saving the certificate to the database copy of the certificate can be also:

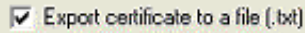
- **Sent direct to the printer**

Spool direct to printer

- **Saved as a PDF file.**

Generate PDF file copy

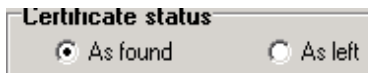
- **Saved to text file.**




13.7.3 AsFound AsLeft

Define the certificate status by checking the relevant control.

AsFound AsLeft

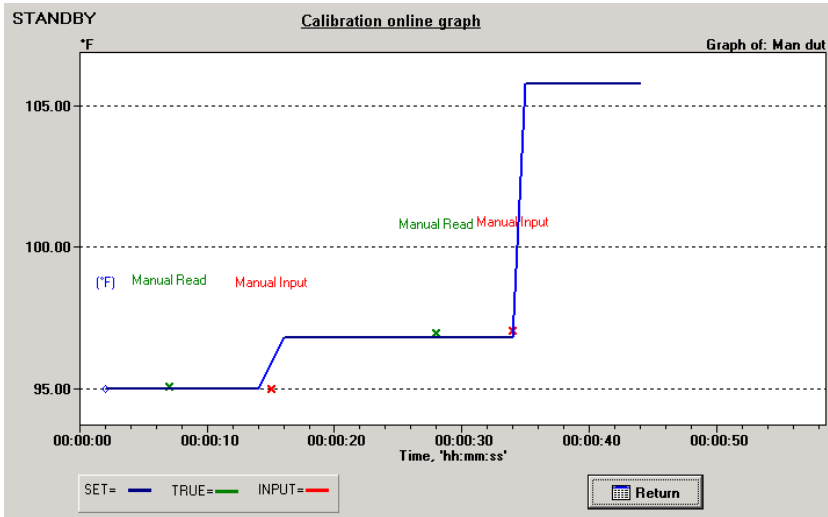


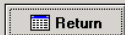
13.8 Online Information

Information regarding the ongoing calibration can be viewed by clicking on the  .

13.9 Online graph information

Online calibration progress graph



Use  to return to the online calibration page. The calibration is not effected by which window is currently visible.

13.10 Reading of data from devices

Data is read from the connected device(s) and displayed in the top right *CURRENT DATA* box. The live data consists of the true temperature (calibrator's *Read* temperature or external reference sensor's *True* temperature depending on scenario) and the sensor under test value (either temperature or measured unit). If manual reading has been selected, the corresponding field will be shown as *Manual*.

- ☞ JOFRACAL retrieves data from the devices approximately once every second. A change in, for example, the calibrator switch input will, therefore, be displayed by JOFRACAL up to one second later.

13.11 Temperature steps

At the beginning of every temperature step, JOFRACAL sets the source to the specified *Set* temperature and, if applicable, to the specified slope rate. When using a manual source (*Source type* set to *Other source* in scenario), the system will display a window, which reminds the user to set the correct temperature.

Calibration continues with the next temperature step when the following criteria have been met:

- The true temperature (*Read* or *True* depending on True read method) fulfils the stability criterion specified in the calibration procedure (See section 0 page 45). If *Manual reading* is selected in the scenario, the temperature will be considered stable when a temperature has been entered manually using **Press when stable**. If the source is a JOFRA calibrator an additional criteria must be met: The calibrator *Read* temperature must stay within the specified temperature tolerance of the calibrator type.
- The sensor under test temperature (*Sensor*) fulfils the stability criterion specified in the calibration procedure. (See section 0 page 45). This only applies if the *Use sensor stability criteria* field is checked. Furthermore, the *True* temperature must be stable. If *Manual reading* is selected in the scenario, the temperature will be considered stable when a temperature has been entered manually using **Press when stable**.

Stability status is displayed to the left of the *Stability Countdown* or *stable* buttons. A status text is shown for *True* and *Sensor* temperatures. Status texts include:

- *Press when stable*. Manual input.
- *Not stable*. The temperature is not yet satisfying the stability criterion.
- *Stable*. The temperature is stable.
- *12:34 (mm:ss)*. The temperature is within the permitted temperature tolerance. The time remaining until the stability criterion is met is shown as minutes and seconds counting down. If the temperature drifts outside the permitted temperature, the tolerance stability will again be displayed as *Not stable*. Not shown if *Manual reading* has been selected.

13.12 Storage temperature

When the last temperature step has been completed, JOFRACAL sets the source to the storage temperature (defined in System configuration, see section 14.3.3, page 132, unless the *Maintain last temp on finish* field in the calibration procedure window has been checked. This only applies if the source is a JOFRA calibrator.

14. SYSTEM CONFIGURATION

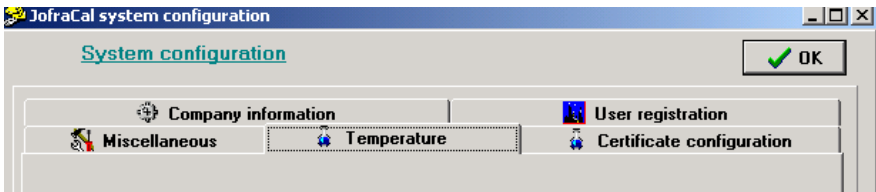
Click 'program' from the main menu then select 'system configuration'.



The system configuration dialog consists of 5 main areas:

- Company information
- Certificate configuration
- User registration
- Temperature
- Miscellaneous

System setup - menu:

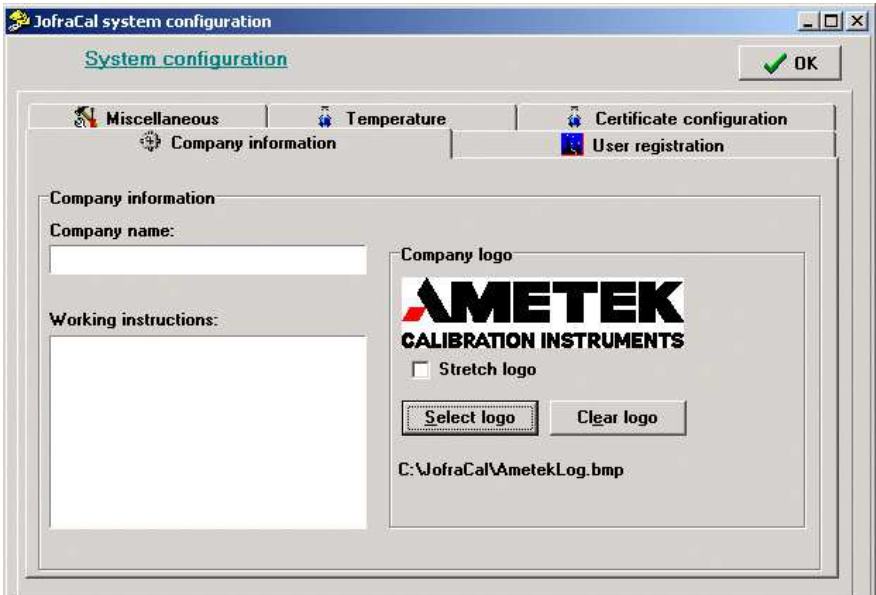


These options are described in the following sections.

14.1 Company information

Click  **Company information** to edit company information.

System setup - company information:



There are three main parameters:

14.1.1 Company name

The name is inserted at the top of all new certificates.

14.1.2 Working instructions

Working instructions are inserted on all new certificates immediately below the company name. The field may be used to enter general information.

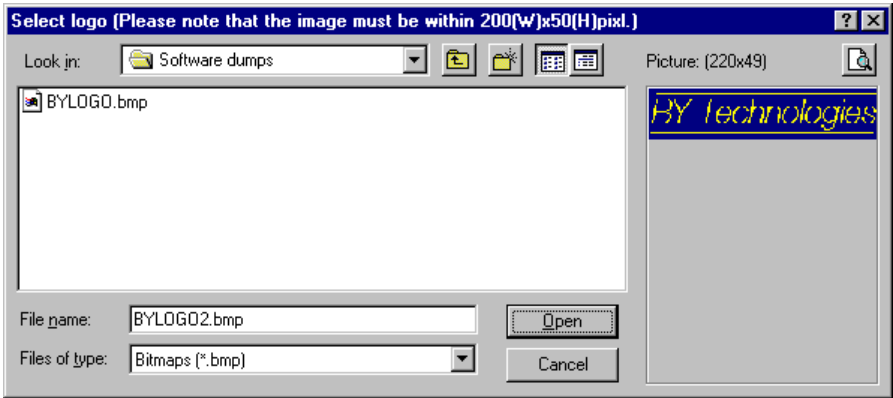
14.1.3 Company Logo

This inserts a logo in the top right-hand corner of your certificates. The logo is included as a Bitmap (*.BMP) file. For the best results, the logo

should have the dimensions 200 x 50 pixels. However, if the logo does not match these dimensions exactly, it can be stretched to fit.

To include a logo in your certificate, Click **Select logo** and use the Select Logo dialog to locate and select your logo.

System setup – select logo:



If, as in the example above, your logo does not fit the 200 x 50 pixels, use the *Stretch logo* option to fill out the space. However, note that this may result in your logo being distorted.

To change the logo, repeat the above step. To remove the logo from your certificates, click **Clear logo**.

14.2 Certificate

Click on the **Certificate configuration** page tab to edit the certification setup.

System setup - certificate:

Certificate configuration

Create pdf file certificate

PDF files path : C:\Programmer\JofraCa\DB\ ...

Send copy to printer

Create online graph file (.grf)

Translate certificate texts

Automate certificate no.

Next certificate No: _____

Lead text: AC _____

Number: 135

Export certificate to a file (.txt)

Key	Value
Identification	Tanýmjlama
Device type	Čihaz Tipi
Manufacturer	Úretici
Serial number	Seri Numarasý
..	..

The certificate setup consists of three parts, certificate numbering, default output selection (PDF & graph files) and certificate translation.

14.2.1 Certificate numbering

All certificates are assigned an ID as they are created. JOFRACAL can be set to two possible numbering methods:

- Automatic numbering. If you select this option, IDs will consist of a *Lead text* (which you define) followed by a consecutive number. You define the first number in the series, e.g. *AMETEK certificate No. 7*. The Lead text (*AMETEK certificate No.*) and the number (7) are automatically separated by a space.
- Manual numbering. The ID must be entered manually when a new certificate is created. JOFRACAL checks whether the ID assigned to the certificate is already in use. Two certificates may not have the same ID.

Three parameters are used to control certificate numbering:

14.2.2 Automatic numbering of certificates

Automatize certificate no.

Check this field if you want JOFRACAL to number certificates automatically.

14.2.3 Next certificate - lead text

Only used with automatic numbering. The field contains the fixed text for the certificate ID.

14.2.4 Next certificate - number

Only used with automatic numbering. The field contains the number of the next certificate. Certificates are numbered consecutively.

14.2.5 Certificate translation

All certificate texts can be translated. This option may be used if a different language or different explanations are required. Certificate translation is based around a table and a number of additional parameters.



Please note that translated texts are not saved with each certificate. This means that when a certificate is printed using the translated texts, the current translated texts are used. This may lead to confusion if the meanings of texts are changed once a certificate has been generated, and the certificate is reprinted at a later date.

14.2.6 Translate certificate texts

Check this field if you want JOFRACAL to translate all certificate texts. The original English texts will be used if the field is not checked. Arial typeface supports text in all languages.

14.2.7 Translation table

The table consists of two columns. The left-hand column contains the original English texts, while the right-hand column contains the

translated texts. Initially, the two columns are identical. Please note that only the right-hand column may be edited.

Certificate translation table

<input checked="" type="checkbox"/> Translate certificate texts	
Key	Value
Identification	Identifikation
Device type	Apparattype
Manufacturer	Fremstiller

The translation text is stored in a file: AmTransl.INI. This can be edited manually, but it is recommended that edits be made from AmeCal Temperature.


14.2.8 Certificate output defaults.

Set the default output for when the calibration is complete and the certificate is generated.

- Save a copy in PDF format and select the location.
- Save the online graph file.
- Send copy to the printer.
- Export certificate data to text file.

The export function creates a semi-colon separated file, which can be imported to Microsoft Excel or Access.

14.3 Default measure units

Click on the  **Default measure units** page tab in system setup to edit the measuring related parameters for temperature and pressure.

System setup – Default measuring units

Default temperature unit

Measuring unit

°C Celsius

°F Fahrenheit

°K Kelvin

Device storage temperature

35 °C

Mains frequency

50hz

60hz

Default pressure engineering unit

Select unit: hPa

Select the default engineering pressure unit

The window contains the following parameters:

14.3.1 Default temperature measuring unit

JOFACAL incorporates the following three temperature units:

- Celsius (°C)
- Fahrenheit (°F)
- Kelvin (K)

14.3.2 Default pressure engineering unit

Select the preferred pressure unit from the below list.

- Bar,
- MBar,
- PSI,
- Pa,
- MPa
- HPa,
- KPa,
- kgcm²,
- cmH₂O₄C,
- cmH₂O₂O₂C,
- mH₂O₄C,
- mH₂O₂O₂C,
- mmHg₀C,
- inHg₀C,
- inH₂O₄C,

- inH2020C,
- inH2060F,
- ftH204C,
- ftH2020C,
- ftH2060F,
- Torr
- CmHg
- MmH20


14.3.3 Storage temperature

When the calibration process is complete, the JOFRA calibrator can be set to a predetermined storage temperature. The default value is 20°C, which ensures that the calibrator can be switched off and stored and the sensors removed from the socket without risk of thermal shock or burns.

14.3.4 Mains frequency

Frequency parameter sent to ASM-80x during configuration.

14.4 Miscellaneous

Click on  [Miscellaneous](#) page tab in system setup to edit various parameters:

System setup - miscellaneous:

Userdefined sensor location information

Locations	Location definition
Position 1	Factory
Position 2	Department
Position 3	Section

Define the test device database location structure

Default IP address (RTC/PTC)

DTI resolution message

Show "Set DTI resolution" info message when starting calibration

Calibration uncertainty message

Select uncertainty information :

Select language

The window contains the following parameters:

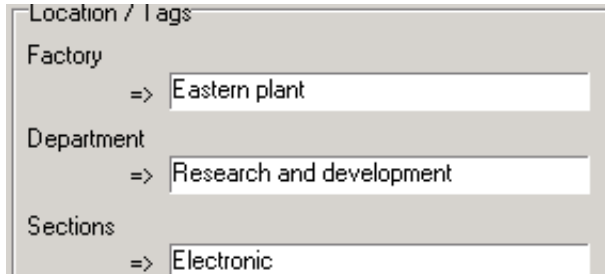
14.4.1 User defined sensor location labels

Location: The miscellaneous page allows the user to define the devices' location structure. Each test device has 3 location parameters to simplify identification and search of a device.

The example below from the test sensor selection & editing window uses all 3 levels starting with a factory ID, department and finally sections.

(See **Sorting by location** section 12.2.1 page 109).

Sensor under test window – location tags:



Location / Tags

Factory
=> Eastern plant

Department
=> Research and development

Sections
=> Electronic

14.4.2 DTI resolution message

When the calibration process starts, JOFRACAL displays a message window informing the user to set the JOFRA DTI to the correct resolution (if a DTI is included in the scenario):

DTI resolution message:

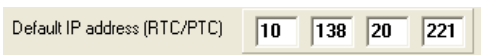


The user can check the *Don't show this message again* check box to disable the message window in the future. Note, however, that

Miscellaneous setup can be used to re-enable the message window by checking *Show “Set DTI resolution” message window when starting calibration*.

14.4.3 IP address for TCP/IP Ethernet communication

This control allows the user to configure the IP address for Ethernet communication to an RTC/PTC type calibrator.



Refer to the RTC user manual regarding access and setting the IP address on the RTC/PTC.

14.4.4 Calibration Uncertainty information

This field allows you to type in comments about factors that may affect the reliability of the calibration. These comments are stored in a database and can be displayed when a calibration commences. Select from the previous defined comments from the dropdown list.

To define a new uncertainty description, click on the **Add** button.

Uncertainty description



Type in the new description and click OK.


14.4.5 Language selection

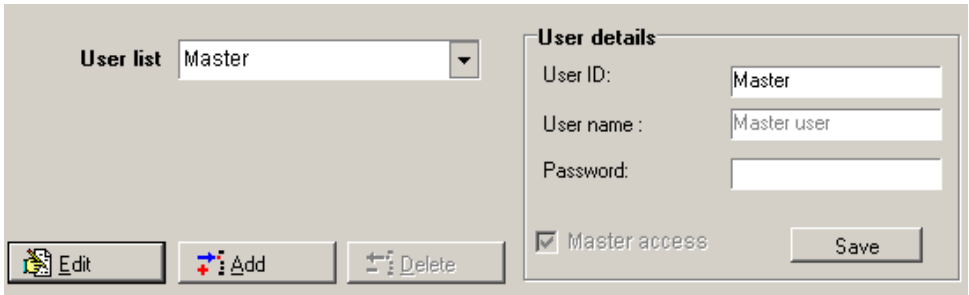


Select language: ENGLISH

JOFRACAL is now available in several languages. The available languages are restricted by the licence which is downloaded on installation. Select the desired language from the available languages in the dropdown list. Default is English.

14.5 User registration

Click on the  User registration page tab in system setup to define users ID, name and Password. Check the Master access to allow the user full access to JOFRACAL.



The screenshot shows a user registration form. On the left, there is a 'User list' dropdown menu with 'Master' selected. Below it are three buttons: 'Edit', 'Add', and 'Delete'. On the right, the 'User details' section contains the following fields: 'User ID:' with 'Master' entered, 'User name:' with 'Master user' entered, and 'Password:' with an empty field. There is a checked checkbox for 'Master access' and a 'Save' button.

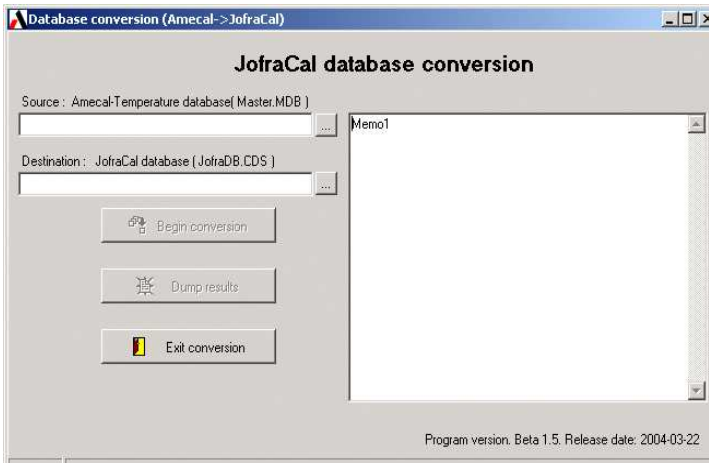
14.6 Database Conversion program

The database conversion program converts an existing Amecal-Temperature database (MSACCESS) to a JOFRACAL database (Client dataset based database - CDS files).

This is done using the conversion program that is installed together with JOFRACAL.

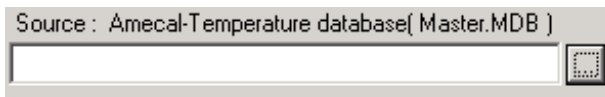
1. Click *Start*.
2. Select *Programs*.
3. Select *JOFRACAL*.
4. Select *Database conversion*.

Database conversion program

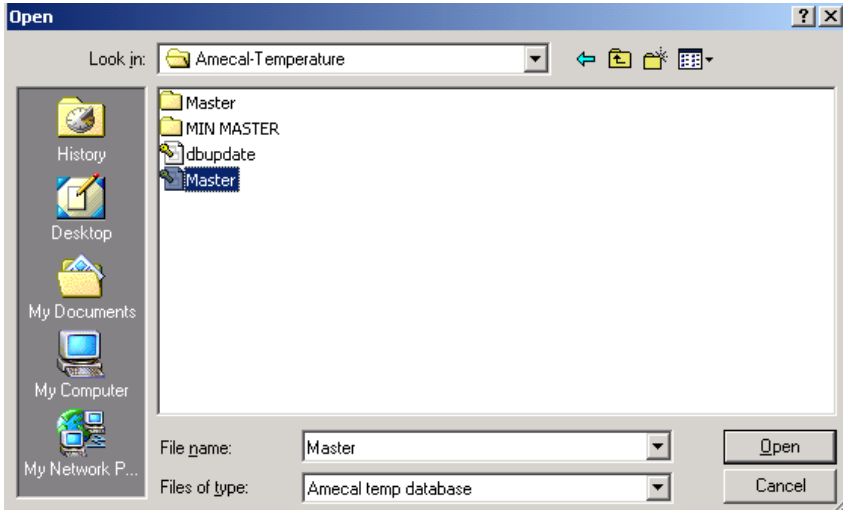


14.6.1 Selecting the Amecal-Temperature database

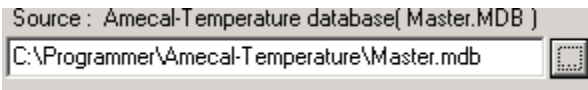
Click on the Select button to find the **Source** database.



A standard windows search dialog is displayed.



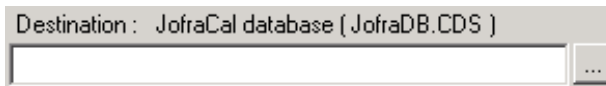
Locate and select the Amecal-Temperature database file and click open.



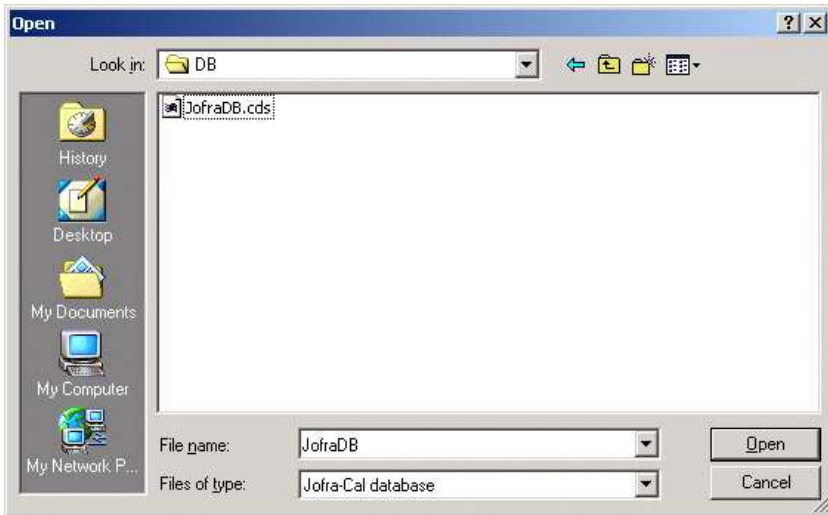
The file path is now displayed in the source component.

14.6.2 Selecting the JOFRACAL database

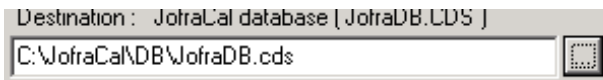
Click on the Select button to find the **Destination** database.



Using the same windows search dialog, locate the JOFRACAL database. JOFRACAL.CDS file.



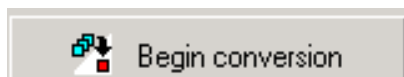
Locate and select the JOFRACAL database “JOFRACAL.CDS” file and click open.



The file path is now displayed in the source component.

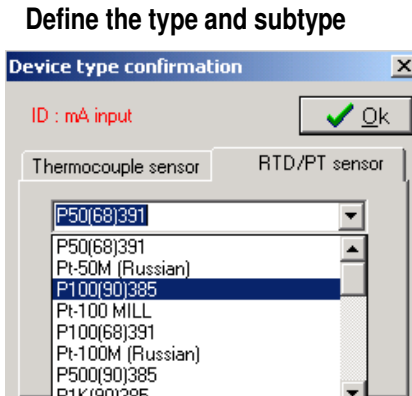
14.6.3 Running the conversion

To begin the conversion click the



button.

Occasionally the program requires more information to ensure that the correct data is converted and will prompt the user to determine a Test device type.



Select the type and/or subtype of the test device then click OK.

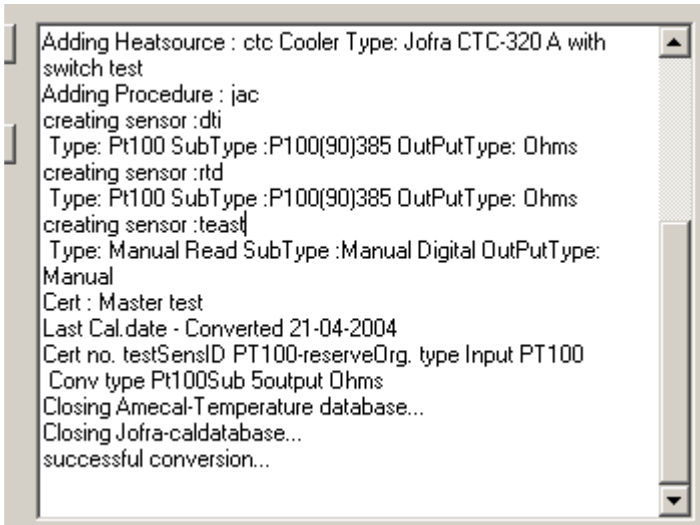
14.6.4 Conversion log panel

Progress of the conversion can be seen in the scrolling window to the right of screen.

A scrolling screen displays the conversion of

- Test devices
- Sources
- Procedures
- Certificates


Conversion log window



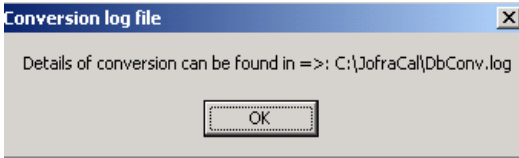
The last line of the log file will report if the conversion was successful or was aborted.


14.6.5 Close and save the conversion details

When completed the user has the possibility to save the conversion log details to a file.

Click the  button to save details to the “DBConv.log” file saved in the JOFRACAL folder.

The conversion program informs the user where the file is saved.

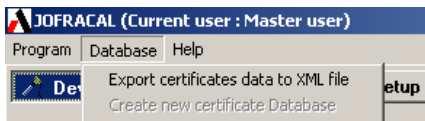


To close the program simply select the  Exit conversion button.

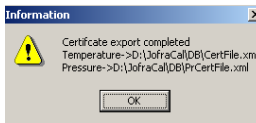
14.7 Export certificate database

It is possible to export the contents of the certificate database to an external file in XML format. XML is a widely accepted standard and compatible with most database systems.

From the top menu in the main form under database select 'Export certificates data to XML file'.



The following message informing the user where the data is saved is displayed.



Both pressure, temperature and signal certificates are saved in the default database folder.

- File containing pressure -> prcertfile.xml.
- File containing temperature -> certFile.xml.
- File containing signal -> siCertFile.xml.

APP. A. SERIAL COMMUNICATION

The PC and the JOFRA device (calibrator or DTI) must be connected using the correct type of serial cable. Use a JOFRA cable, (type 60V991 for SE series and a 105366 for ATC series) and ensure that the device is switched off when you connect the cable from the PC. Both the device and the PC should be earthed to avoid noise interference and damage to the equipment. The PC and the device should also be connected to the same mains circuit.

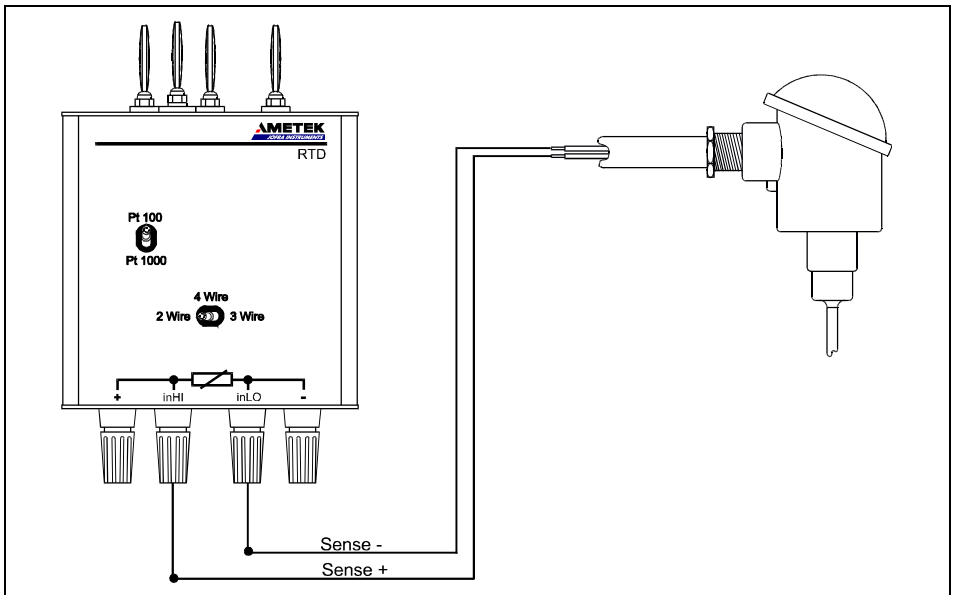
Applies to SE-series calibrators only

When the calibrator is switched on, it detects the signal levels from the PC. Serial communication will not be initialized if the calibrator cannot detect a signal from the PC, and it will be impossible for JOFRACAL to communicate with the calibrator. You are therefore advised not to switch the calibrator on until JOFRACAL has been started. Alternatively, you will have to switch the calibrator off before turning it back on. It is not sufficient to turn the PC on, since the serial port will not be initialized until JOFRACAL is started up.

APP. B. HOW TO CONNECT INPUT MODULES

Input modules of the type RTD, TC, TC-H and V-DC may all be used with JOFRA SE calibrators with an RS-232 serial interface. The modules allow the user to test the sensors and compare the input signals with the test temperatures that are generated. The modules are connected to the mA-socket on the calibrator (see the calibrator manual).

B.1 Using a 2-way RTD sensor with an RTD input module



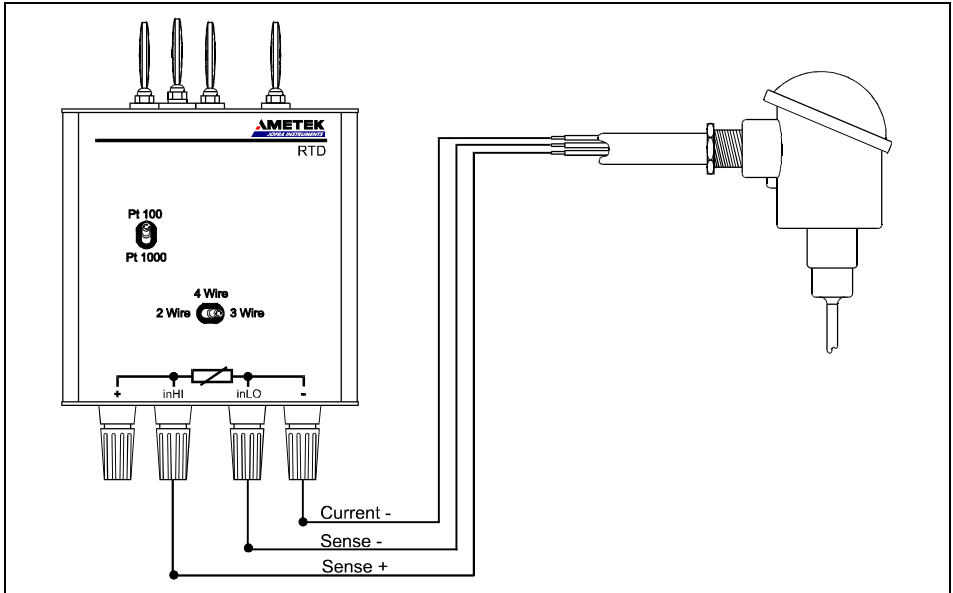
1. Connect the two sensor cables to the RTD module as shown on the diagram.

2. Set the *Wire* switch to the 2 *Wire* position on the module.

For RTD modules without a *Wire* switch, you will have to cause short-circuits between + to *inHI*, and - to *inLO*.

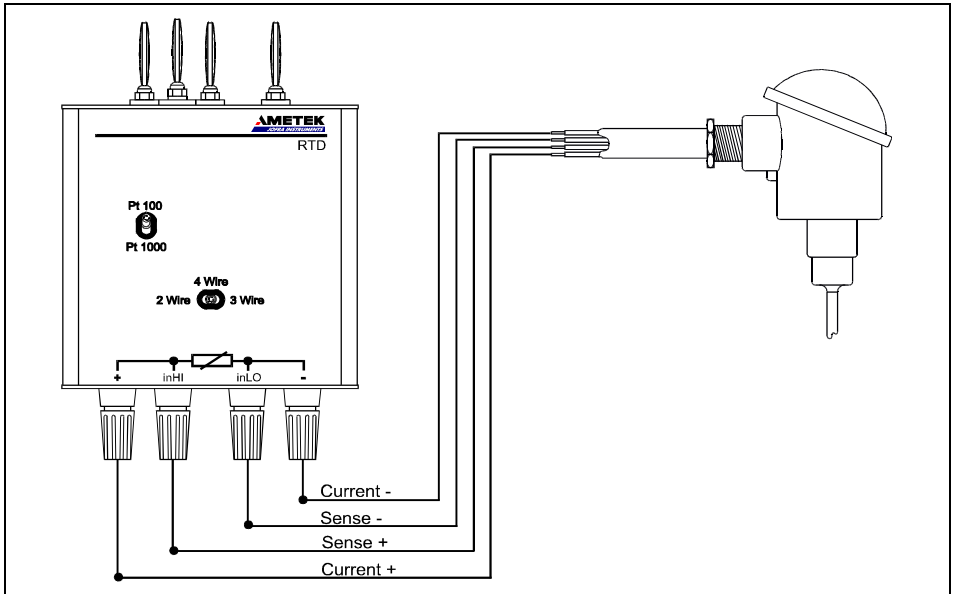
3. Select a sensor type using the *Pt-100/Pt-1000* switch. *Pt-50* sensors use the *Pt-100* position, while *Pt-500* sensors use the *Pt-1000* position.

B.2 Using a 3-way RTD sensor with an RTD input module



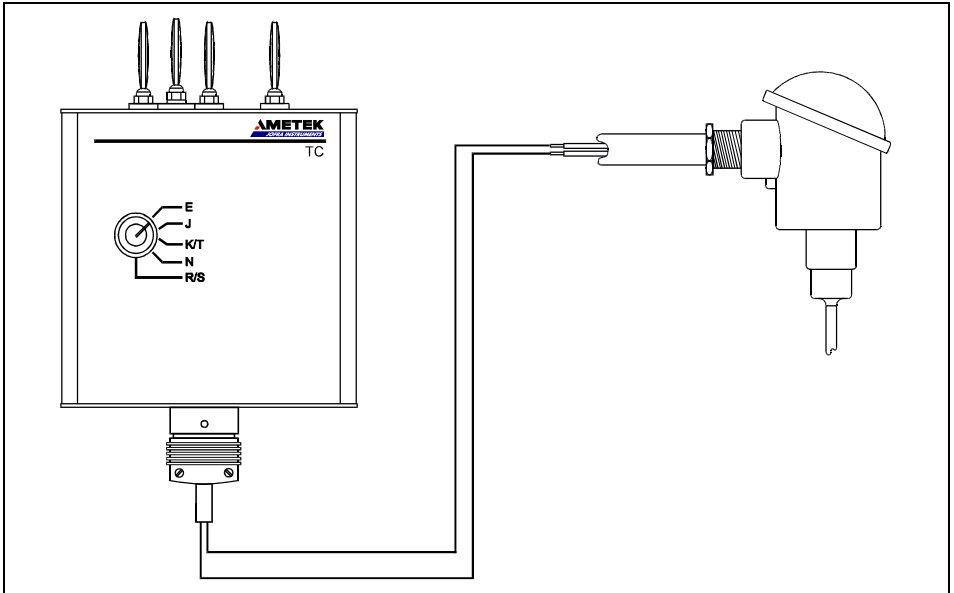
1. Connect the 3 sensor cables to the RTD module as shown on the diagram.
2. Set the *Wire* switch to the *3 Wire* position on the module.
3. Select a sensor type using the *Pt-100/Pt-1000* switch. *Pt-50* sensors use the *Pt-100* position, while *Pt-500* sensors use the *Pt-1000* position.

B.3 Using a 4-way RTD sensor with an RTD input module



1. Connect the 4 sensor cables to the RTD module as shown on the diagram.
2. Set the *Wire* switch to the *4 Wire* position on the module.
3. Select a sensor type using the *Pt-100/Pt-1000* switch. *Pt-50* sensors use the *Pt-100* position, while *Pt-500* sensors use the *Pt-1000* position.

B.4 Using a thermocouple sensor with a TC input module

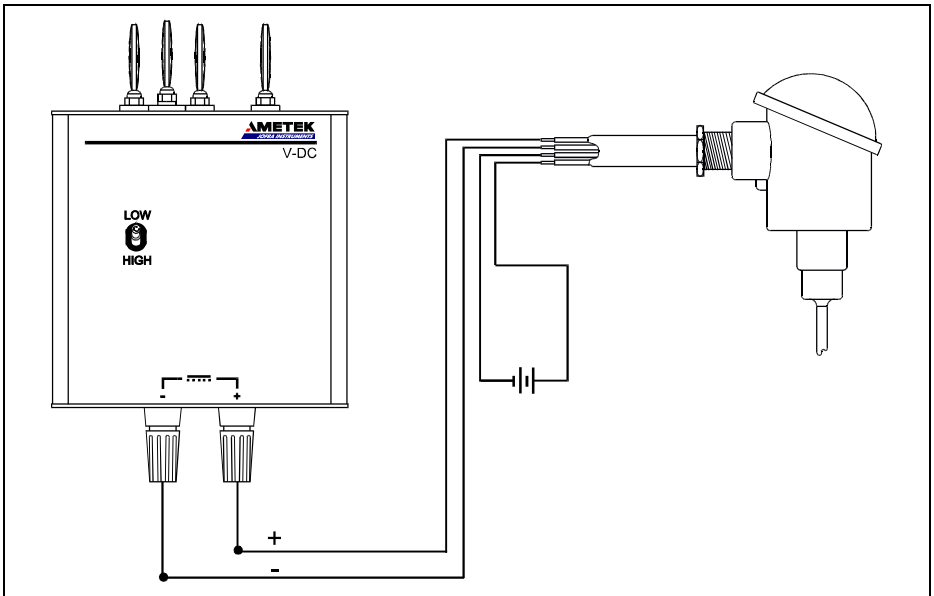


1. Connect the thermocouple sensor to the TC module as shown on the diagram.
2. Select the thermocouple type to be tested by rotating the selector switch on the module. If you selected *TC module: Type XK (Russian)* as input type (see section 11.4.1.1.2 page 105) the selector switch must be placed in position *E*.

B.5 Using a thermocouple sensor with a TC-H input module

Thermocouple sensor connection to a TC-H module is identical to the TC module see previous section.

B.6 Using a voltage transmitter with a V-DC input module



1. Connect the 2 transmitter cables to the V-DC module as shown on the diagram.

Note that the transmitter must have a separate voltage supply.

2. Select the voltage using the *Low/High* switch on the module.

AMETEK Sensors, Test & Calibration

A business unit of AMETEK Measurement & Calibration Technologies Division offering the following industry leading brands for test and calibration instrumentation.

JOFRA Calibration Instruments

Temperature Calibrators

Portable dry-block calibrators, precision thermometers and liquid baths. Temperature sensors for industrial and marine use.

Pressure Calibrators

Convenient electronic systems ranging from -25 mbar to 1000 bar - fully temperature-compensated for problem-free and accurate field use.

Signal Instruments

Process signal measurement and simulation for easy control loop calibration and measurement tasks.

M&G Deadweight Testers & Pumps

Pneumatic floating-ball or hydraulic piston dead weight testers with accuracies to 0.015% of reading. Pressure generators delivering up to 1,000 bar.

Crystal Pressure

Digital pressure gauges and calibrators that are accurate, easy-to-use and reliable. Designed for use in the harshest environments; most products carry an IS, IP67 and DNV rating.

Lloyd Materials Testing

Materials testing machines and software that guarantees expert materials testing solutions. Also covering Texture Analysers to perform rapid, general food testing and detailed texture analysis on a diverse range of foods and cosmetics.

Davenport Polymer Test Equipment

Allows measurement and characterization of moisture-sensitive PET polymers and polymer density.

Chatillon Force Measurement

The hand held force gauges and motorized testers have earned their reputation for quality, reliability and accuracy and they represent the de facto standard for force measurement.

Newage Hardness Testing

Hardness testers, durometers, optical systems and software for data acquisition and analysis.



United Kingdom

Tel +44 (0)1243 833 302
stc.uk@ametek.com

France

Tel +33 (0)1 30 68 89 40
general.lloyd-instruments@ametek.fr

Germany

Tel +49 (0)2159 9136 510
info.mct-de@ametek.de

Denmark

Tel +45 4816 8000
jofra@ametek.com

USA

Florida
Tel +1 (800) 527 9999
cal.info@ametek.com

California

Tel +1 (800) 444 1850
crystal@ametek.com

India

Tel +91 22 2836 4750
jofra@ametek.com

Singapore

Tel +65 6484 2388
jofra@ametek.com

China

Shanghai
Tel +86 21 5868 5111

Beijing

Tel +86 10 8526 2111
jofra-china.sales@ametek.com.cn

www.ametekcalibration.com