

# IRD SERVER & PEL50/PEL100 POWER-ENERGY LOGGERS



The electrical measuring instruments in the PEL50 & PEL100 range are much more than simple energy meters, as they record electricity consumption while measuring and analysing the energy used in order to optimize your energy efficiency. The PEL50 & PEL100 power and energy loggers are designed to monitor your installations and optimize your energy performance to achieve savings. They record all the electricity consumption of a factory, a workshop, a building, an agency, etc.



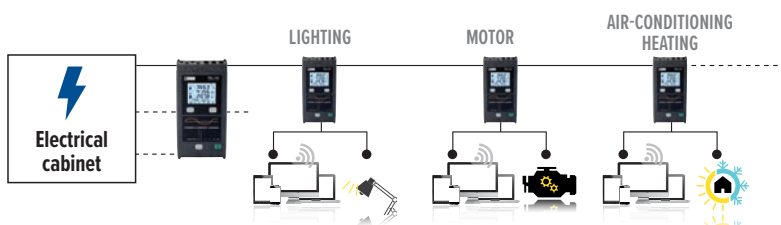
PEL50 & PEL100s positioned on the various electrical feeders offer a simple means of sizing the relative significance of each line in terms of the overall consumption, defining a load profile for the installation and thus determining the improvements which should be given priority - all without interrupting operation of the installation.

When it is difficult to access the **PEL50 & PEL100** because of IT network security or when you are far away from the logger, our solution allows you to view the measurements remotely via Internet, without weakening the computer security systems in place.

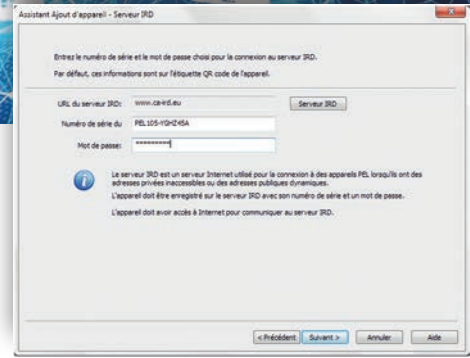
Remote data retrieval

Power survey

Communication  
via Internet



With the **DataView®** data processing platform, users can access all the data in the PEL50 & PEL100 using a PC or tablet, via an Ethernet link with an IRD server. This server, hosted by Chauvin Arnoux and connected to the internet, simplifies communication between the PEL50 & PEL100 and the PC equipped with the DataView® **PEL Transfer** software. This functionality is available to all owners of PEL50 & PEL100 power and energy loggers.



## Without an IRD server

Before this IRD (Internet Relay Device) server was set up, the **PEL50 & PEL100**, linked to a private Ethernet network, communicated with the PC which was connected to a second private network. Each network was equipped with its own router for connection to the Internet. The remote PC 2 could not communicate with the **PEL50 & PEL100** because Router 1 blocked access. The network administrator then had to configure the access rights to allow it. This procedure was time-consuming when a PC needed to communicate with several **PEL50 & PEL100**s, as each access had to be configured manually (1 authorization per **PEL50 & PEL100**).

## With an IRD server

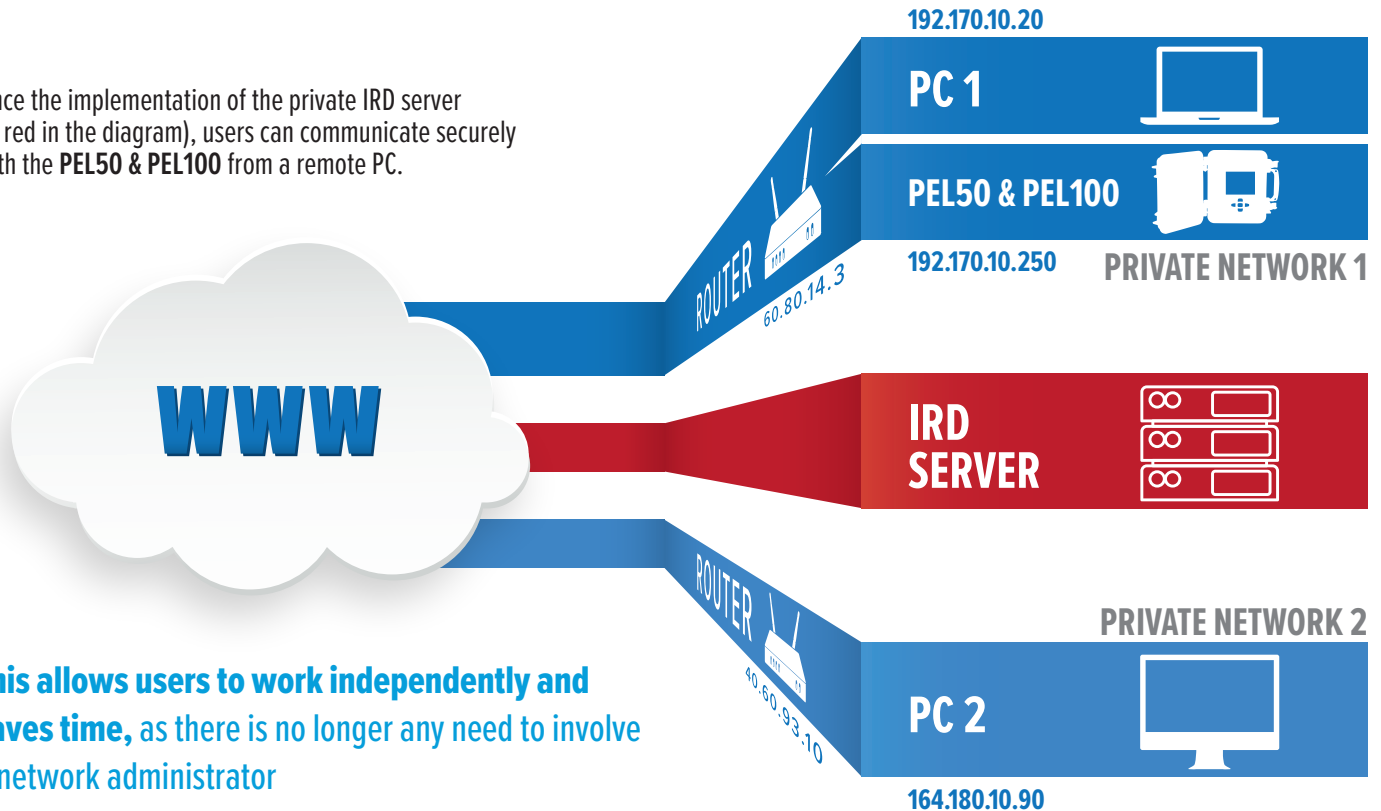
In IRD mode, it is possible to use a PC equipped with DataView® to communicate with the instrument wherever it may be, even if it is on another private Ethernet network. This communication mode can also be deactivated on the **PEL50 & PEL100** configuration panel in PEL Transfer.

*Users simply enter the following information:*

- *The serial number of the PEL50 & PEL100*
- *The password supplied with the instrument when it was delivered*
- *The IP address and the connection port*

When the **PEL50 & PEL100** configured in IRD mode is connected via internet, it is then recognized automatically by the IRD server.

Since the implementation of the private IRD server (in red in the diagram), users can communicate securely with the **PEL50 & PEL100** from a remote PC.



**This allows users to work independently and saves time, as there is no longer any need to involve a network administrator**

**FRANCE**  
**Chauvin Arnoux**  
 12-16 rue Sarah Bernhardt  
 92600 Asnières-sur-Seine  
 Tél : +33 1 44 85 44 85  
 Fax : +33 1 46 27 73 89  
 info@chauvin-arnoux.fr  
 www.chauvin-arnoux.fr

**UNITED KINGDOM**  
**Chauvin Arnoux Ltd**  
 Unit 1 Nelson Ct, Flagship Sq, Shaw Cross Business Pk  
 Dewsbury, West Yorkshire - WF12 7TH  
 Tel: +44 1924 460 494  
 Fax: +44 1924 455 328  
 info@chauvin-arnoux.co.uk  
 www.chauvin-arnoux.com

**MIDDLE EAST**  
**Chauvin Arnoux Middle East**  
 P.O. BOX 60-154  
 1241 2020 JAL EL DIB - LEBANON  
 Tel: +961 1 890 425  
 Fax: +961 1 890 424  
 camie@chauvin-arnoux.com  
 www.chauvin-arnoux.com

