

## Dial Indicator, Lug Back, AGD/ANSI 0,025", 0,0001", Jew. Bearing, Shockpr. Item number: 3802S-10



### Description

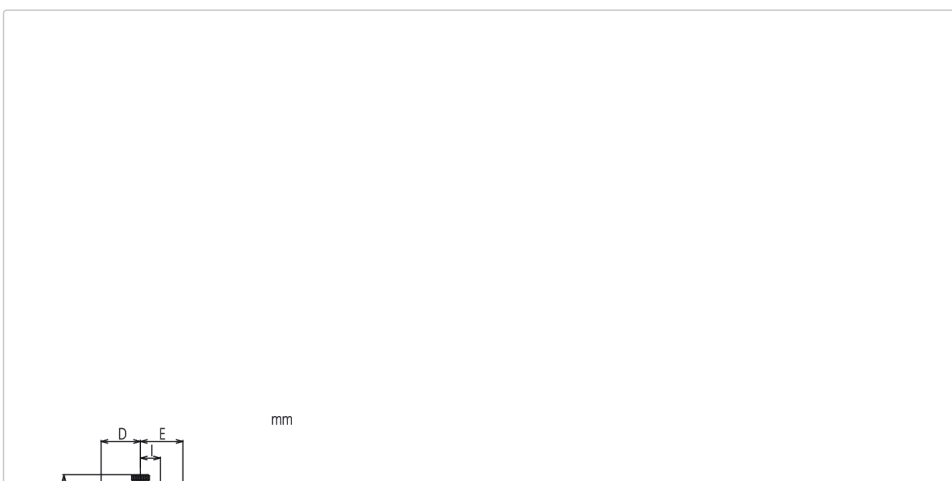
This is a standard, inch dial indicator. It offers you the following benefits:

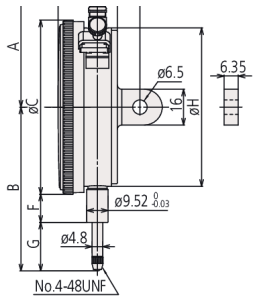
- Large-diameter dial face  $\varnothing = 78$  mm for easy reading
- Supplied with limit markers and a bezel clamp as standard
- 0,001" / 0,0001" graduation

### Specification

Range:	<b>0,025" Inch</b>
Accuracy:	<b><math>\pm 0,0001"</math></b>
Range per rev.:	<b>0.01"</b>
Mass:	<b>260 g</b>
Scale:	<b>0-10</b>
C:	<b>78 mm</b>
D:	<b>17.7 mm</b>
Mass lug/plain:	<b>260/245 g</b>
E:	<b>19 mm</b>
F:	<b>12.6 mm</b>
G:	<b>8.1 mm</b>
I:	<b>9 mm</b>
Error of indication one revolution:	<b><math>\pm 0,0001"</math></b>
Stem:	<b>9.52 mm / 0.375"</b>
Contact point:	<b>Carbide tipped, thread: 4-48UNF</b>
Delivered:	<b>with certificate of inspection, limit indicators</b>
Digital/Analog:	<b>Analog</b>
Inch-Metric:	<b>Inch</b>
Type:	<b>ANSI/AGD Standard</b>

### Dimensions





## Spare parts

### Consumable spares:



**Contact Element Ball Point**  
**1/4" Length, Carbide, Inch**  
**21BZB005**