

Dial Indicator, Lug Back, AGD/ANSI 0,025", 0,0001", Jew. Bearing, Shockpr. Item number: 3803S-10



Description

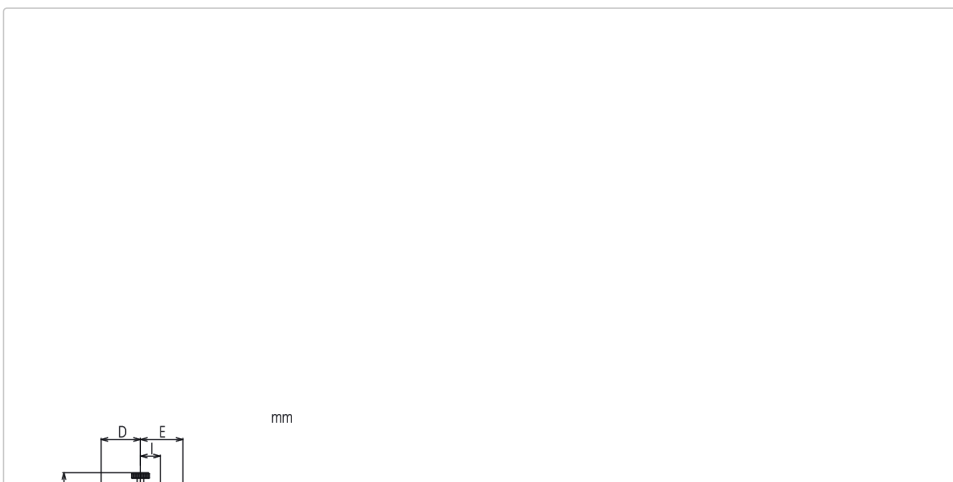
This is a standard, inch dial indicator. It offers you the following benefits:

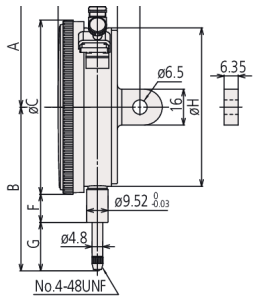
- Large-diameter dial face $\varnothing = 78$ mm for easy reading
- Supplied with limit markers and a bezel clamp as standard
- 0,001" / 0,0001" graduation

Specification

Range:	0,025" Inch
Accuracy:	$\pm 0,0001"$
Range per rev.:	0.01"
Mass:	260 g
Scale:	0-5-0
C:	78 mm
D:	17.7 mm
Mass lug/plain:	260/245 g
E:	19 mm
F:	12.6 mm
G:	8.1 mm
I:	9 mm
Error of indication one revolution:	$\pm 0,0001"$
Stem:	9.52 mm / 0.375"
Contact point:	Carbide tipped, thread: 4-48UNF
Delivered:	with certificate of inspection, limit indicators
Digital/Analog:	Analog
Inch-Metric:	Inch
Type:	ANSI/AGD Standard

Dimensions





Spare parts

Consumable spares:



Contact Element Ball Point
1/4" Length, Carbide, Inch
21BZB005