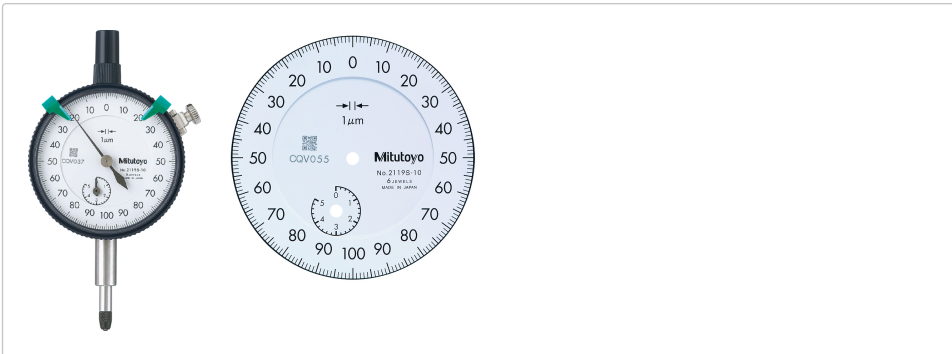


Dial Indicator, Lug Back 5mm, 0,001mm, Jeweled Bearing Item number: 2119S-10



Description

Standard Type, 2 / 5 mm Range, 0,001 / 0,005 mm Graduation

This is a standard, metric dial indicator. It offers you the following benefits:

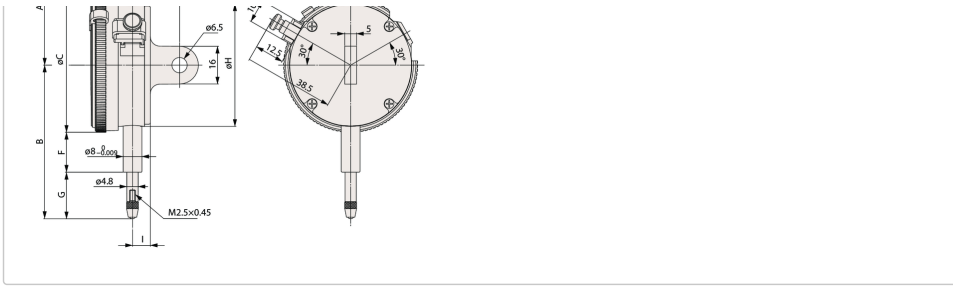
- Bezel clamp and lifting lever (optional) can be attached to either right or left side. They can be easily installed and removed without tools.
- No through screw holes on the frame and secure adhesion between the bezel and the crystal as well as the use of an O-ring prevents water or oil penetration.

Specification

Range:	5 mm
Range per rev.:	0.2 mm
Graduation:	0.001 mm
MPE any 1/10 revolution:	4 μm
MPE any 1/2 revolution:	6 μm
MPE any 1 revolution:	6.5 μm
H MPE (Hysteresis):	2.5 μm
Mass:	146 g
R MPE (Repeatability):	1.5 μm
Scale:	0-100-0
C:	57 mm
D:	17.7 mm
Mass lug/plain:	146/137 g
E:	20 mm
F:	16.9 mm
G:	14.9 mm
I:	7.6 mm
Stem:	8 mm
Contact point:	Carbide tipped, thread: M 2.5 x 0.45 mm
Delivered:	with certificate of inspection, limit indicators
Digital/Analog:	Analog
Inch-Metric:	Metric
fu:	2 μm

Dimensions





Spare parts

Consumable spares:



Contact Element Ball Point
7,3mm Length, Carbide, Metric
901312